

# Election 2025

# Welcome

Living our values every day



Accountability



Integrity



Empowerment



Respect



Excellence



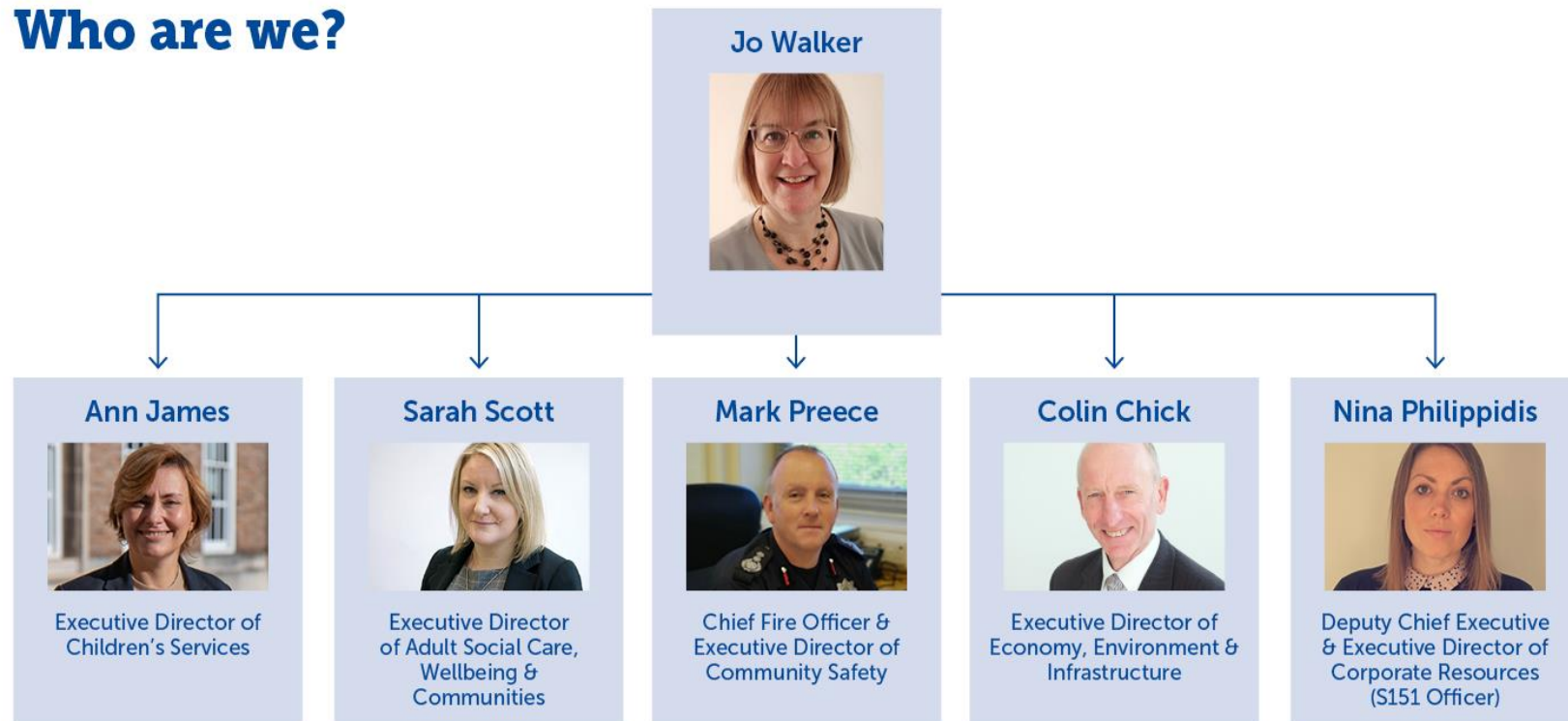
Gloucestershire  
COUNTY COUNCIL

# Congratulations!

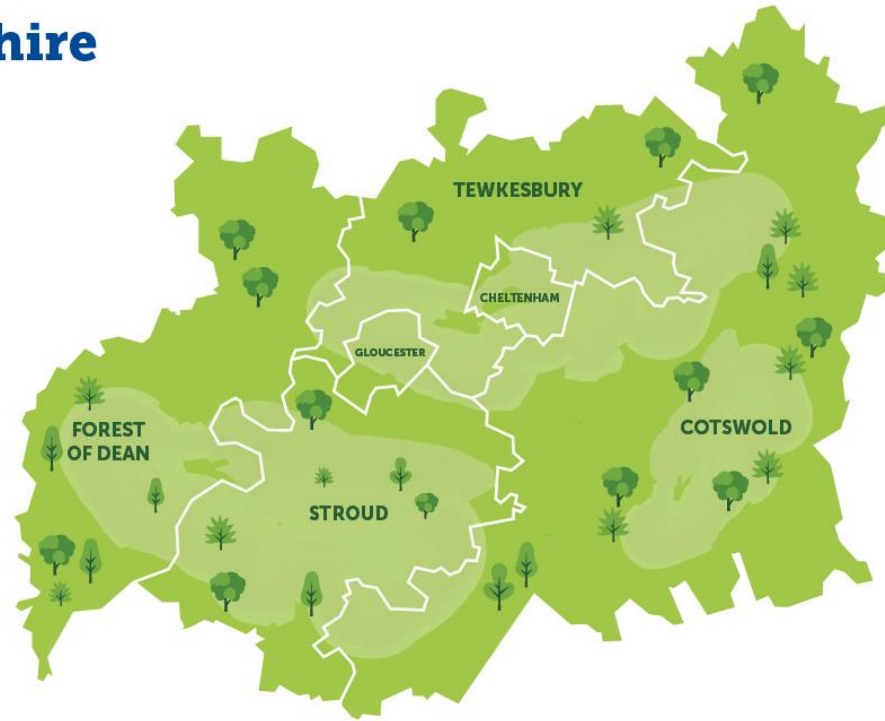


Political Group	No. of councillors
Liberal Democrats	27
Reform	11
Green	9
Conservative	6
Labour	1
Independent	1
<b>Total</b>	<b>55</b>

# Who are we?



# Gloucestershire



Living our values every day



Accountability



Integrity



Empowerment



Respect



Excellence



Gloucestershire  
COUNTY COUNCIL

# About Gloucestershire

Percentage of population living  
in 10% most deprived areas



**21,054 (3.2%)**

(IMD 2019, MHCLG and Mid 2022  
Population Estimates, ONS)

**Miles of road**  
(2024/25)



**121**

either resurfaced or  
surfaced dressed



**Children  
in care**

(March 2025)

**760**



**Adults  
receiving  
long term  
care**

(March 2025)

**7437**



Population of  
Gloucestershire (ONS, 2023)

**659,276** (2023)

**683,849** (2028)

**739,482** (2043)

## Key employment sectors (2023 BRES,ONS)



Wholesale  
and retail  
**14.8%**



Human health  
and social work  
**13.8%**



Manufacturing  
**10.6%**

**Growth in  
0-15 years old**  
(2014-2023)

**6.2%**



**Growth in  
65+ years old**  
(2014-2023)

**17.7%**



**% of  
population  
living in  
rural areas**



(2002)

**29.2**

**% of  
population  
living in  
urban areas**



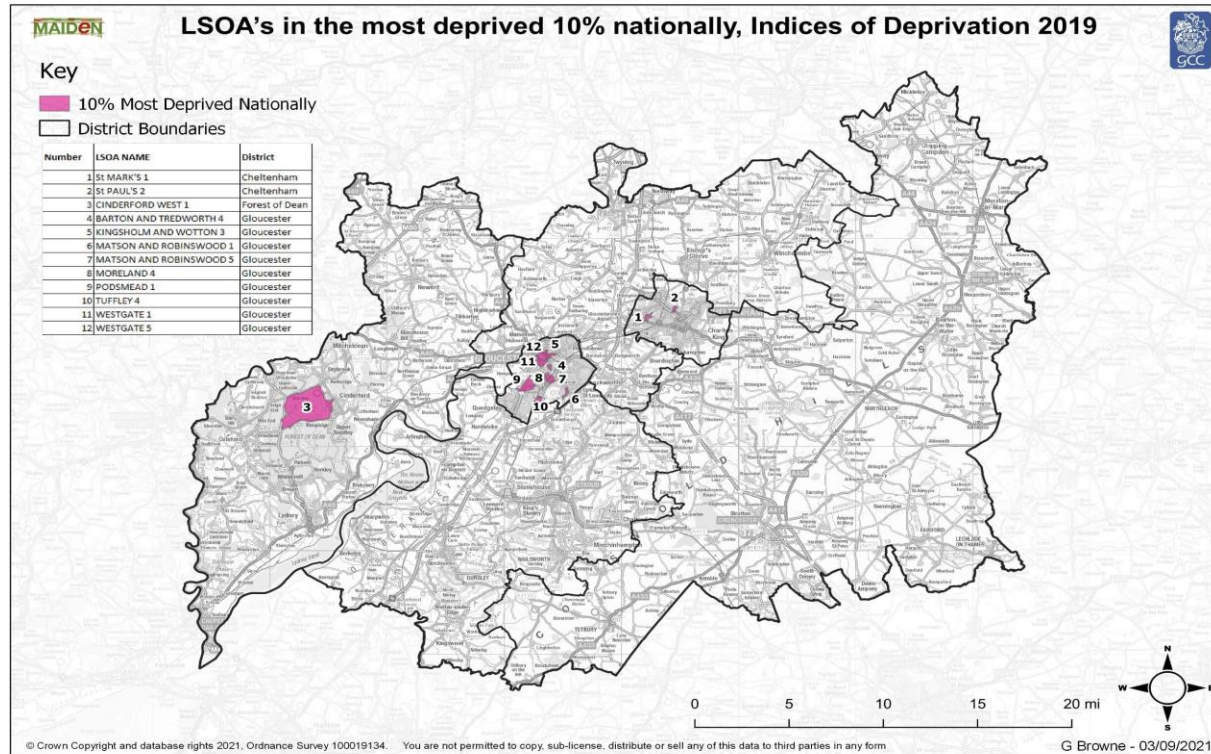
(2024)

**87.5**





# Most deprived neighbourhoods



# The role of a county councillor

Represent your  
ward and the  
people who live in it

Provide a  
community  
leadership role

Contribute to the  
development of the  
council policies &  
strategies

Perform a  
regulatory role

Be a great  
Corporate Parent

Uphold the  
standards of public  
office

# What we do.....





# Adult and Community Services



Public Health

Living our values every day



Accountability



Integrity



Empowerment



Respect



Excellence



Gloucestershire  
COUNTY COUNCIL

# Children and Young People



Living our values every day



Accountability



Integrity



Empowerment



Respect



Excellence



Gloucestershire  
COUNTY COUNCIL

# Community Safety



Gloucestershire  
Coroners Court



Gloucestershire  
Fire and Rescue Service  
Working together for a safer Gloucestershire



Gloucestershire  
COUNTY COUNCIL  
Trading Standards Service

# Environment, Economy & Infrastructure



**your highways**  
investing in Gloucestershire's roads

**GLOUCESTERSHIRE  
EMPLOYMENT  
AND SKILLS HUB**

**The Library**

Living our values every day



Accountability



Integrity



Empowerment



Respect



Excellence



**Gloucestershire**  
COUNTY COUNCIL



# Corporate Resources



# GCC finances - 2025/26

Revenue budget for 2025/26:

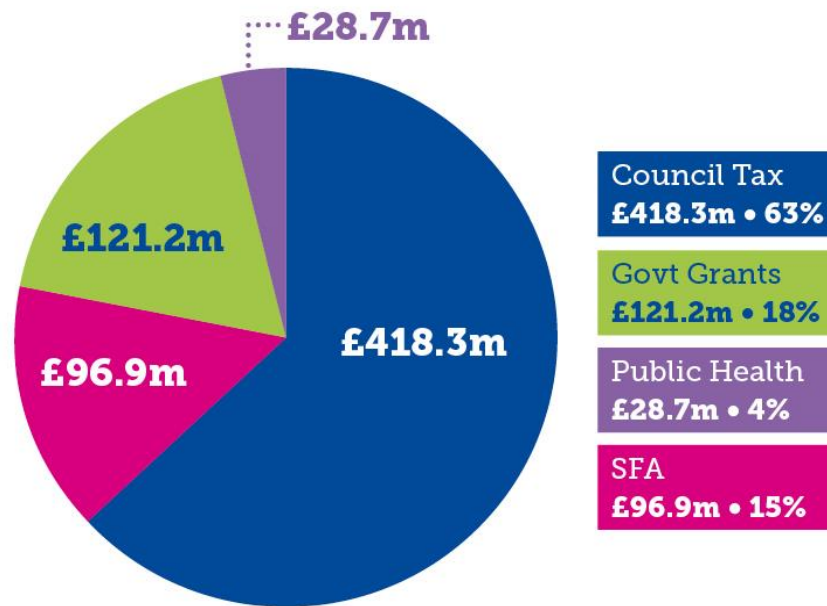
**£665.1 million**

Capital budget over next 4 years:

**£590m**

Budget gaps totalling

**c. £11m** in following  
three years to be addressed

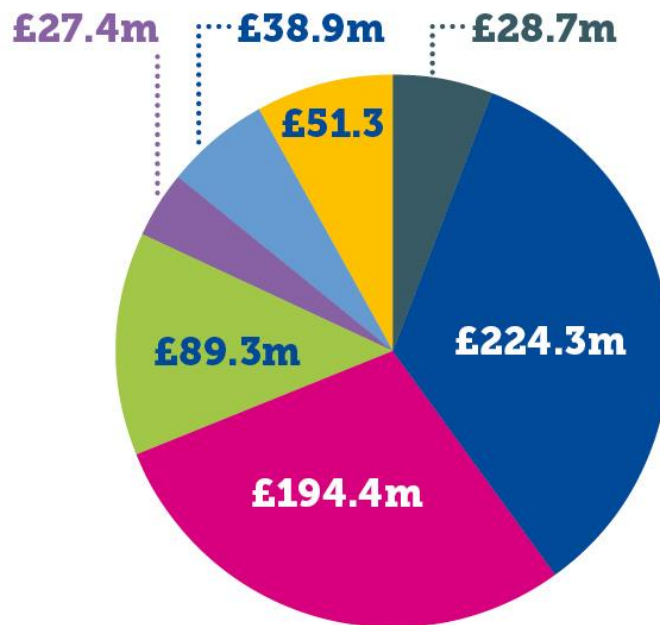


# Spend by directorate - 2025/26

Revenue budget  
for 2025/26:  
**£665.1 million**

**£68.6m**  
new investment

**£24.5m**  
efficiencies and  
additional income



Adults  
**£224.9m • 34%**

Children and Families  
**£194.4m • 29%**

Community Safety (inc Fire)  
**£27.4m • 4%**

Corporate Resources  
**£51.3m • 8%**

Economy, Environment  
and Infrastructure  
**£89.3m • 13%**

Public Health and Communities  
**£38.9m • 6%**

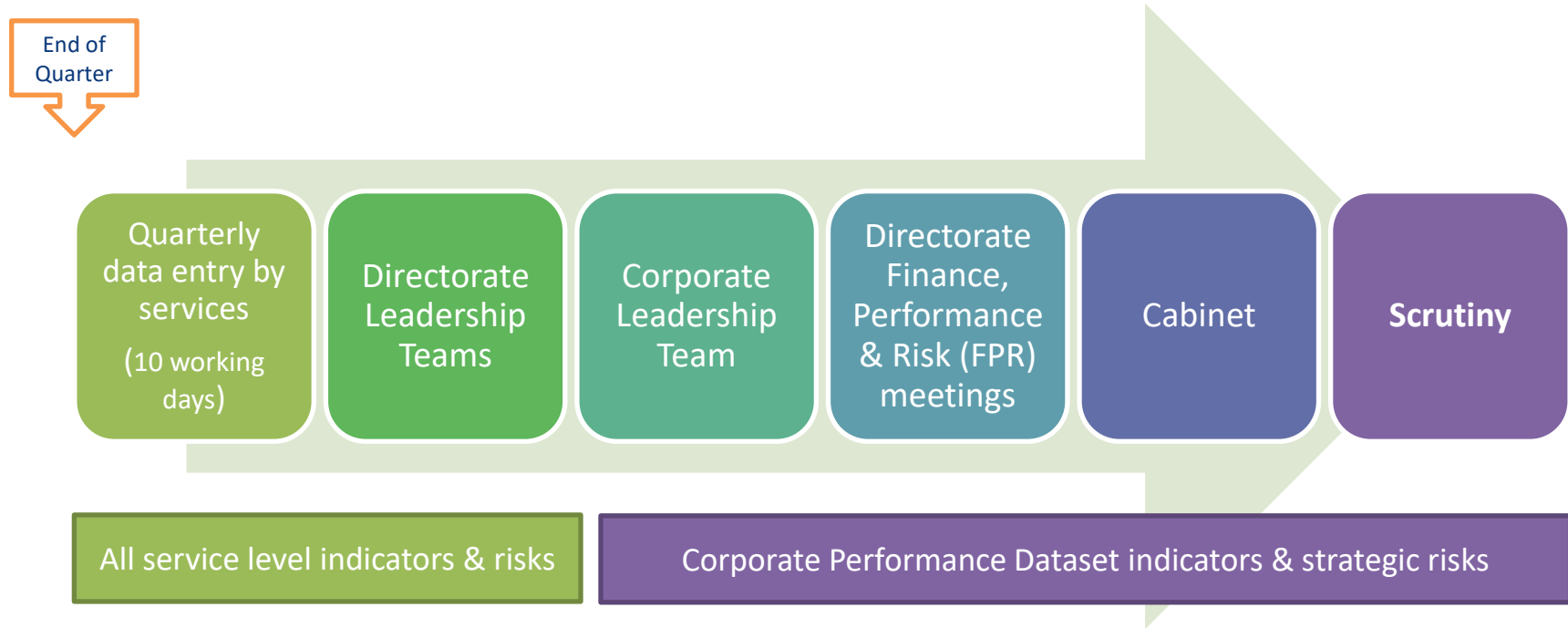
Technical and Countywide  
**£38.9m • 6%**



# Our strategic planning framework – Golden Thread



# Performance & Risk Reporting Framework



# 3 lines of assurance

## 1<sup>st</sup> line

### Performance and Risks are owned & managed

- Managers and teams
- Service and project plans
- Regular reporting
- Training and toolkits

Conversation types

In service conversations, examining detail of process and people.

## 2<sup>nd</sup> Line

### Functions that support & challenge

- Support services
- Directors oversight
- **Member oversight (Cabinet, Scrutiny)**

Directorate and Member oversight conversations, examining delivery of outcomes.

## 3<sup>rd</sup> Line

### Independent assurance

- Internal Audit
- Audit & Governance Committee
- External audit
- Inspection

Reflective and challenge conversations, examining effectiveness and veracity.

# Partnerships



Accountability



Integrity



Empowerment



Respect



Excellence



Gloucestershire  
COUNTY COUNCIL

# What we don't do

Bin collection



Council tax collection



Planning applications



Licensing



Motorways



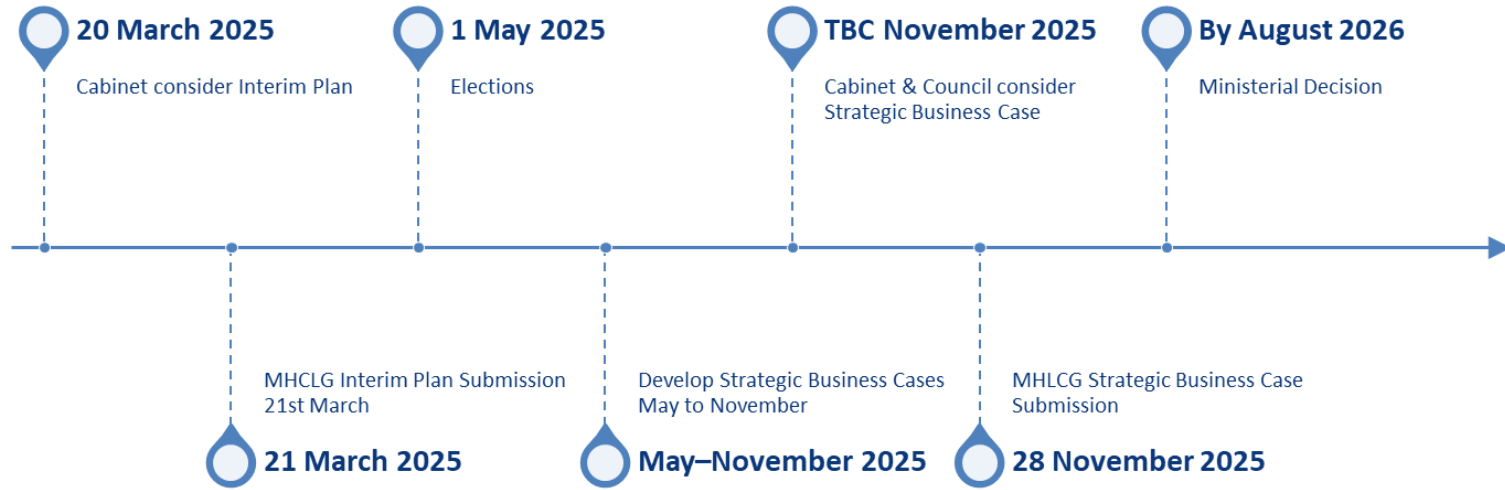
Housing



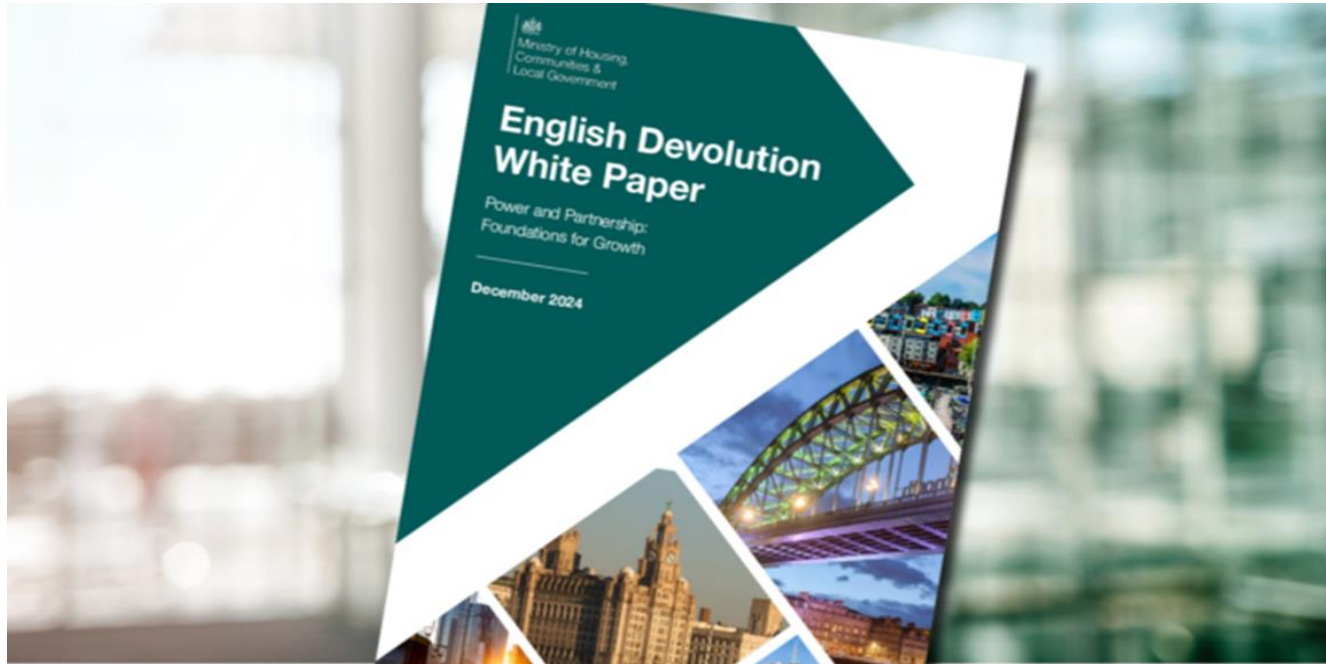
Leisure and culture



# Local Government Reorganisation



# Devolution





# Working together

## Our values



Accountability



Integrity



Empowerment



Respect



Excellence

## Member/officer protocol

## Staff networks



Living our values every day



Accountability



Integrity



Empowerment



Respect



Excellence



Gloucestershire  
COUNTY COUNCIL

# How the council works



# Training and development

## Market place – Tuesday 6 May

- GCC Staff Networks
- Performance and Data
- ICT
- Highways
- Members wellbeing
- Representatives from each of the five Directorates

## Induction program

Including:

- Core Information for Members
- ICT Drop in
- Working with the media
- Members' role as Corporate Parents
- Scrutiny and Chairing

# Q&A

