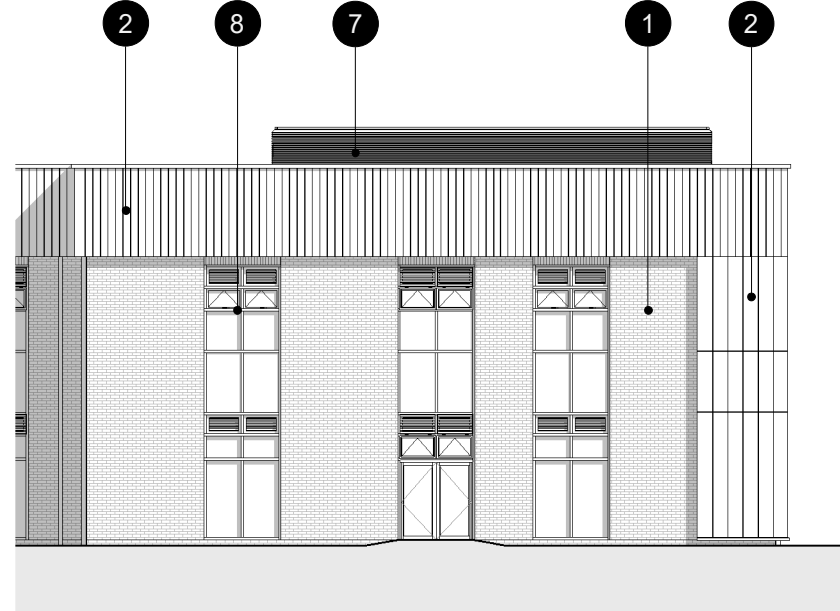


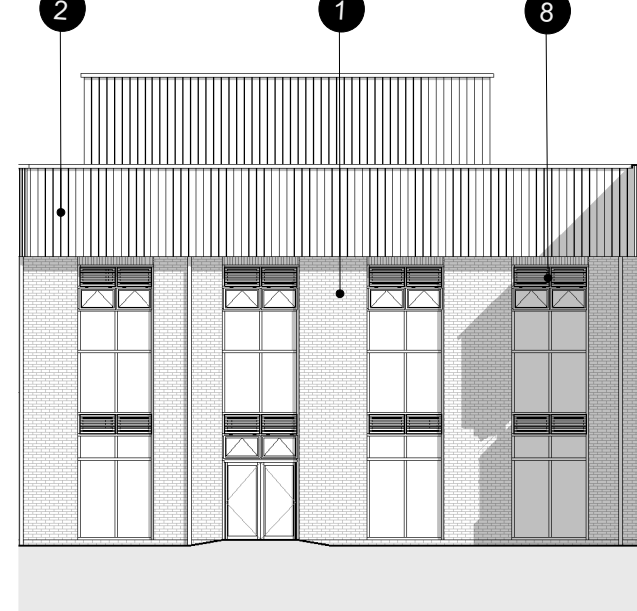
1 North Elevation
1 : 200



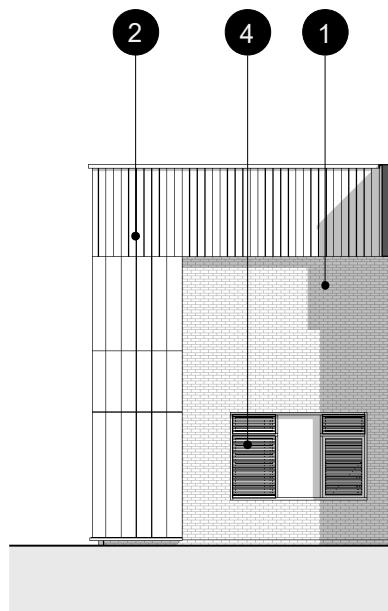
2 East Elevation
1 : 200



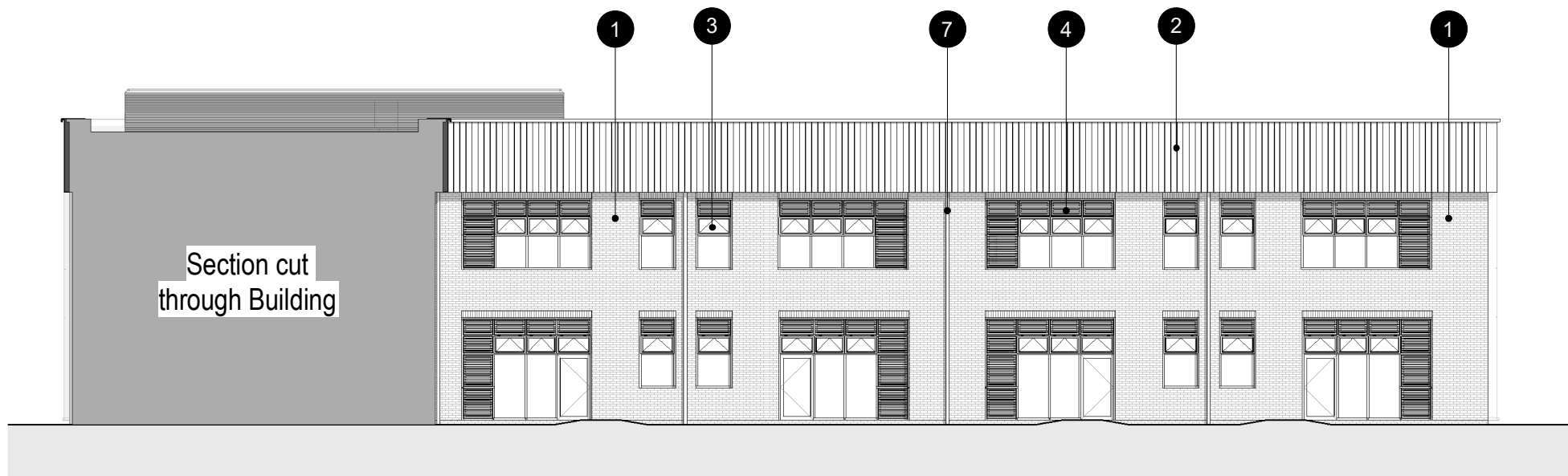
3 South East Elevation
1 : 200



4 South West Elevation
1 : 200



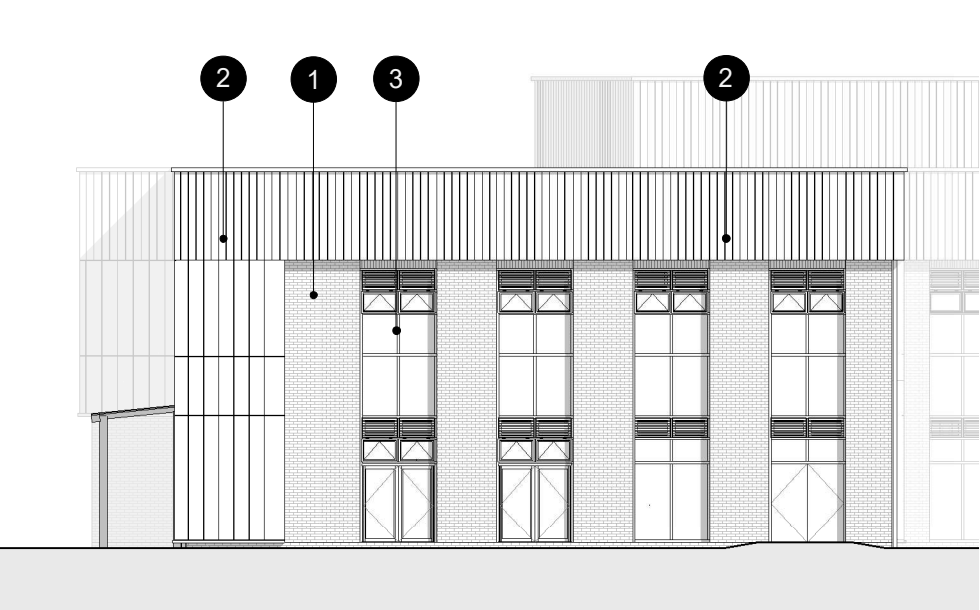
5 North East Elevation
1 : 200



6 West Elevation
1 : 200



7 East Elevation
1 : 200



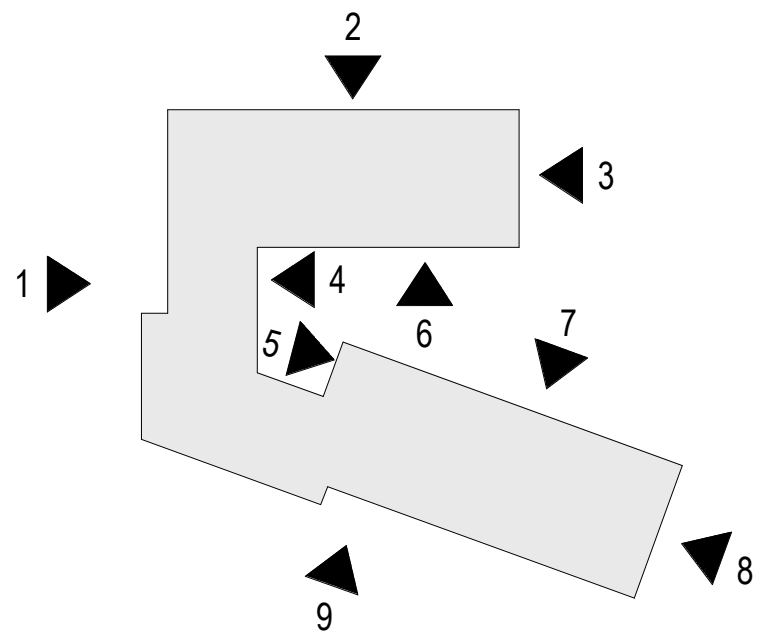
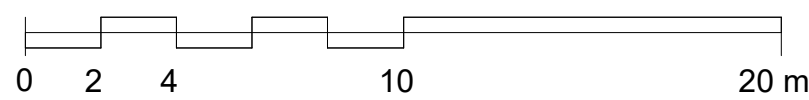
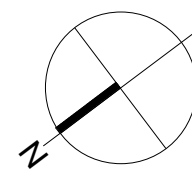
8 South Elevation
1 : 200



9 West Elevation
1 : 200

Key:

- | | | |
|---|--|---|
| 1 Mixed Stock Buff Facing Brick | 5 Powder Coated Aluminium Rainwater Pipe - Bronze Colour | 9 Powder Coated Aluminium & Glazed Canopy - Bronze Colour |
| 2 Trespa Woods Rainscreen Cladding in Rhinestone Oak | 6 Powder Coated Aluminium Signage - Bronze Colour | |
| 3 Powder Coated Aluminium Windows and Doors - Bronze Colour | 7 Powder Coated Aluminium Louvres - Bronze Colour | |
| 4 Powder Coated Louvred Panels - Bronze Colour | 8 Powder Coated Aluminium Flashing - Bronze Colour | |



Roberts Limbrick

03333 405 500

mail@robertslimbrick.com

robertslimbrick.com

Registered Office England No. 06558029

Project Name

New Special School Cheltenham

Client Name

Gloucestershire County Council

Drawing Title

Proposed Elevations

Scale

As indicated • A1

Project No.

11659

Status

A3

Purpose Of Issue

Issued for Stage 3

Project	Org	Vol	Level	Form	Role
NSSC	RL	01	XX	D	A

Number

102200

Revision

C01