

# Potential Waste Sites in Gloucestershire –

## Seeking your views

Waste Core Strategy  
Site Options Consultation

Summary Leaflet  
October 2009



tackling  
climate change

committed to a 10% reduction  
in our carbon emissions by 2012



Gloucestershire  
COUNTY COUNCIL

We can produce this document in Braille, in large print, on audio tape and in other languages. If you would like a copy in one of these formats, please phone 01452 426504.

এই তথ্যের পত্রিকাটি ব্রেইলে, বড় ছাপায়, কানে শোনার টেপে এবং অন্যান্য ভাষায় আমরা প্রকাশ করতে পারি। এই ধরনের কোন আকারে আপনি যদি এটার একটা কপি (প্রতিলিপি) পেতে চান, তাহলে দয়া করে ০১৪৫২ ৪২৬৫০৪ নম্বরে টেলিফোন করবেন।

我們可以製造這份文件的凸字本，大型字體本，音帶及其他語文的譯本。如果你希望得到以上任何一種版本，請致電01452 426504。

અમે આ દસ્તાવેજ અંધશ્રિયિ, મોટા અક્ષરો, ઓડિઓ ટેપ અને બીજી ભાષાઓમાં તૈયાર કરી શકીએ છીએ. તમોને જો ઉપરની કોઈ ઢબમાં એની નકલ જોઈતી હોય તો, મહેરબાની કરીને ૦૧૪૫૨ ૪૨૬૫૦૪ નંબર પર ફોન કરશો.

ہم اس دستاویز کو بریل میں، بڑی چھپائی، آڈیو ٹیپ پر اور دوسری زبانوں میں تیار کر سکتے ہیں۔ اگر آپ کو اس کی نقل کسی ایک مذکورہ فورمیٹ میں درکار ہے تو براہ مہربانی اس نمبر پر فون کریں : 01452 426504

Niniejszy dokument dostępný jest alfabecie brajla, w wersji z powiększonym drukiem, na kasecie oraz w innych wersjach językowych. Aby otrzymac dokument w innym formacie prosimy dzwonic pod numer 01452 426504.

## Introduction

Gloucestershire has a major waste management challenge that needs to be solved. Whilst all waste presents a challenge for us, a particularly pressing issue is household waste. Our target is to recycle and compost at least 60% of our household waste. However, even if we manage to achieve this there will still be at least 150,000 tonnes of leftover (residual) household waste to deal with each year.

Gloucestershire County Council is in the process of preparing a Waste Core Strategy (WCS). This will provide an overall framework for the future planning of waste management in Gloucestershire between 2011 and 2026. The WCS will address a broad range of issues including how to minimise waste and increase recycling and composting.

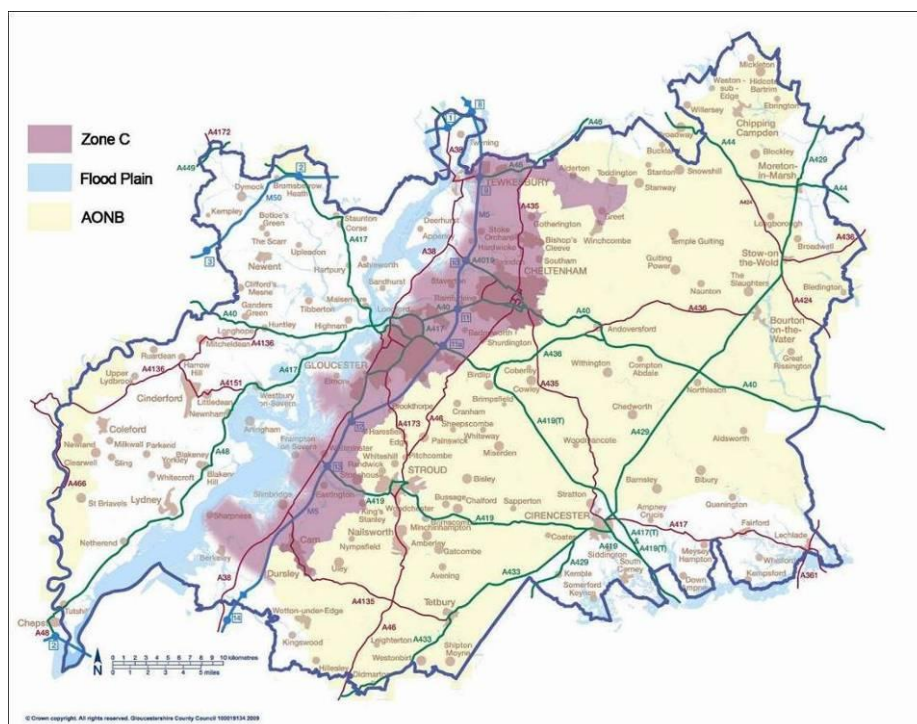
## Purpose of this Consultation

The purpose of this consultation which runs from 5<sup>th</sup> October – 30<sup>th</sup> November 2009 is to obtain your views on a number of potential waste sites put forward by landowners. We are looking for comments from a wide range of stakeholders including members of the public, the waste industry, interest groups as well as other statutory and non-statutory consultees.

The comments we receive will be taken into account along with responses to earlier consultations in 2006 and 2008 and we will then look to formally publish the final draft WCS in late 2010. After that an independent Planning Inspector will consider whether it is 'sound' and assuming it is the Council will be able to formally adopt it.

## Where are the Sites?

Our preferred strategy is to focus the search for sites primarily on the area we have defined as 'Zone C'. This is shown shaded in purple on the plan below.



There are a number of reasons why we consider focusing on Zone C to be appropriate; it is consistent with national and regional policy on waste, it reflects the fact that major growth could come forward at Gloucester and Cheltenham and it avoids the floodplain and Cotswolds 'Area of Outstanding Natural Beauty' (AONB).

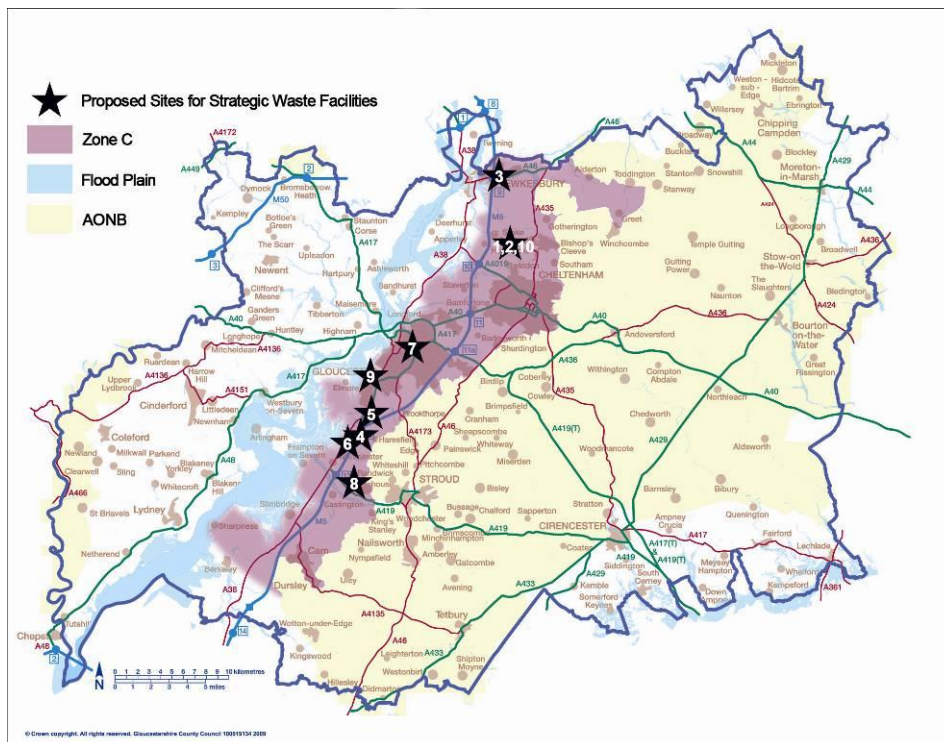
## Sites in 'Zone C'

We have identified 10 specific sites within Zone C.

The sites are (in alphabetical order):

1. Areas A, B & C at Wingmoor Farm East, Tewkesbury Borough
2. Areas A, B & C at Wingmoor Farm West, Tewkesbury Borough
3. Easter Park, Ashchurch/Tewkesbury Industrial Estate, Tewkesbury Borough
4. Javelin Park, Haresfield, Stroud District
5. Land adjacent to Quadrant Business Centre, Quedgeley, Stroud District
6. Land at Moreton Valence, Stroud District
7. Land north of Railway Triangle, Gloucester
8. Nastend Farm, Stroudwater Business Park, Stonehouse, Stroud District
9. Netheridge Sewage Treatment Works, Gloucester
10. The Park, Wingmoor Farm West, Tewkesbury Borough

Their broad location is shown on the plan below.



The sites identified are considered to be suitable for municipal waste but could if necessary be used for other waste (e.g. commercial and industrial) provided the main use of the site is municipal. They might also be suitable for the provision of supporting infrastructure such as waste transfer facilities, for example if waste needed to be transferred out of the County. The sites have been put forward by their landowners and are therefore available.

In addition to the ten specific sites identified above we would welcome your views on whether there are any other areas within Zone C that we should be looking at. The adoption of the Regional Spatial Strategy by the Government is currently stalled. The current draft put forward by the Government contains proposals for urban extensions to Cheltenham and Gloucester, something the County Council has opposed.

If the Government adopts the Regional Spatial Strategy then development proposals may be brought forward by developers. Therefore in addition to receiving your views on the ten specific sites identified above we would welcome your views on whether we should be looking to incorporate residual municipal waste treatment into the potential urban extensions if and when they are brought forward.

## Sites outside Zone C

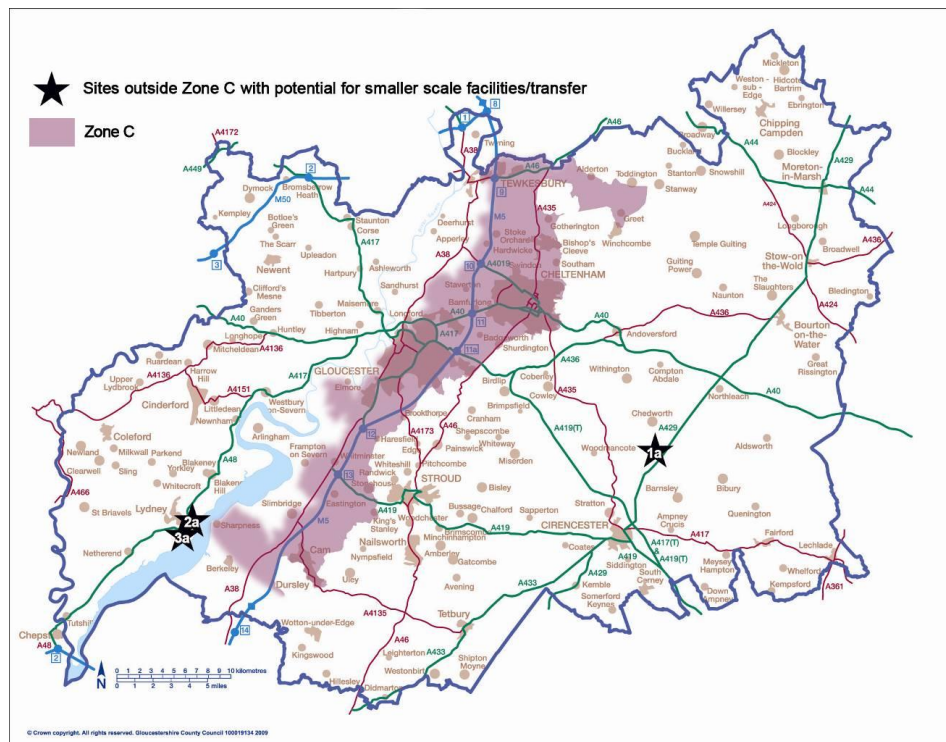
To ensure flexibility, to reflect the fact that sites don't always come forward as expected and to ensure provision is made for any additional facilities that may be needed to support the Zone C sites, a number of sites have been identified outside Zone C.

These sites are (in alphabetical order):

- (1a) Foss Cross Industrial Estate, north of Cirencester
- (2a) Hurst Farm, Lydney
- (3a) Land at Lydney Industrial Estate, Lydney

These could be used for waste treatment if needed (probably relatively small in scale) or to provide supporting waste infrastructure such as waste transfer facilities. Again all sites have been put forward by their landowners and are therefore available.

Their broad location is shown on the plan below.



We would welcome your view on these additional sites.

## A Combination Approach

It is important to note that the sites identified above are not mutually exclusive. It could be that a combination of sites from within and outside Zone C represents the most appropriate solution for Gloucestershire. Your views on this approach are welcome.

## Summary

Even if we achieve our ambitious recycling and composting targets, there is a defined need to provide new sites in Gloucestershire to deal with the treatment of residual municipal waste. Failing to deliver a more sustainable alternative to landfill will have negative financial and environmental implications. This is a key issue for the WCS to address.

We need to agree where these sites should be focused and which particular sites should come forward.

We would therefore welcome your views on the following:

- The principle of focusing our search for sites primarily on Zone C;
- The merits of the 10 specific sites we have identified in Zone C;
- Any other areas within Zone C that we should be looking at for incorporating waste treatment facilities into future development sites. For example the potential urban extensions which may come forward at Gloucester and Cheltenham;
- The principle of identifying sites outside Zone C to bring forward if needed;
- The merits of the sites we have identified outside Zone C; and
- Whether you are aware of any other suitable sites within or outside Zone C that we have missed.

The comments we receive will be taken into account in formally publishing the WCS in 2010.

## How you can respond

The consultation period runs for 8 weeks from **5<sup>th</sup> October - 30<sup>th</sup> November 2009**. There are a number of ways in which you can respond:

**1.** Complete an electronic questionnaire at <http://www.engagespace.co.uk/engage/gcc/>

**2.** Complete a hard copy questionnaire (available separately) and send it to us at the following freepost address:

Minerals and Waste Planning Policy  
Environment Department  
Gloucestershire County Council, Shire Hall  
FREEPOST NAT8320  
GLOUCESTER  
GL1 2BR  
(No stamp required)

**3.** Email your response to: [m-wplans@gloucestershire.gov.uk](mailto:m-wplans@gloucestershire.gov.uk)



**For further information on this consultation  
please contact:**

**Minerals & Waste Planning Policy**

Email: [m-wplans@gloucestershire.gov.uk](mailto:m-wplans@gloucestershire.gov.uk)

**Find more online at:**

<http://www.gloucestershire.gov.uk/wcs>

**For further information on the Council's residual  
waste PFI project (which does not form part of  
this consultation) please contact:**

**The Waste Management Unit**

Email: [realrubbish@gloucestershire.gov.uk](mailto:realrubbish@gloucestershire.gov.uk)

**Find more online at:**

[http://www.recycleforgloucestershire.com/real\\_rubbish/](http://www.recycleforgloucestershire.com/real_rubbish/)



For telephone enquiries relating to the Waste Core Strategy  
please call 01452 425667