

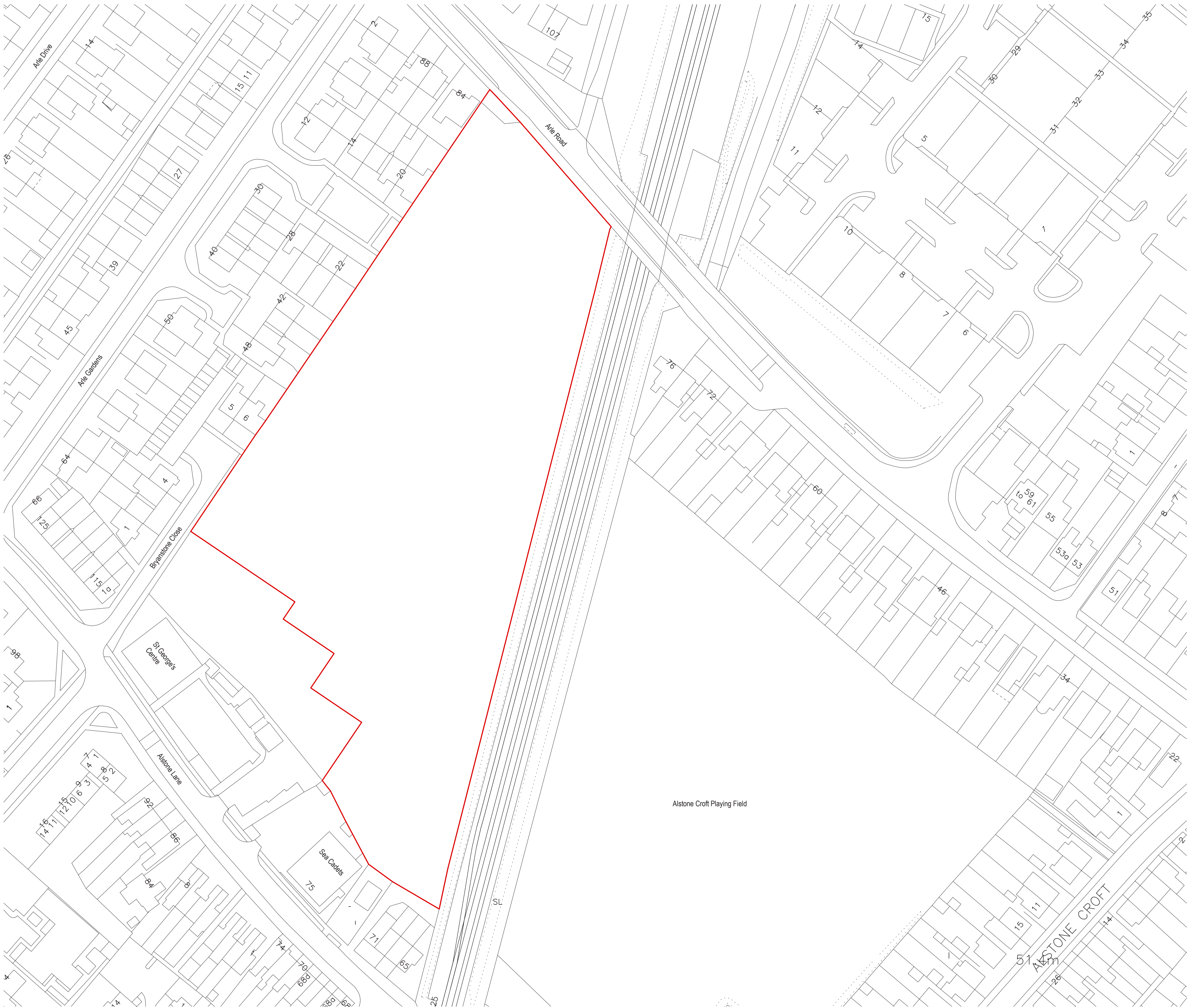
A New Special School in Cheltenham

Site Location

Arle Road, Cheltenham

It is proposed to develop the site, which is owned by Gloucestershire County Council, as a special school for children and young people with Complex Learning Difficulties, including autism and associated communication and interaction difficulties. We will also look to increase the amount of space available to The St George’s Centre as part of this project.

As the design process for the new school building is in the early stages, we would like to offer an opportunity for people who live nearby to input into the conversation about the site layout and for the design team to understand what is important to you and what you think should be taken into account during the design process.



A New Special School in Cheltenham

Site Zoning

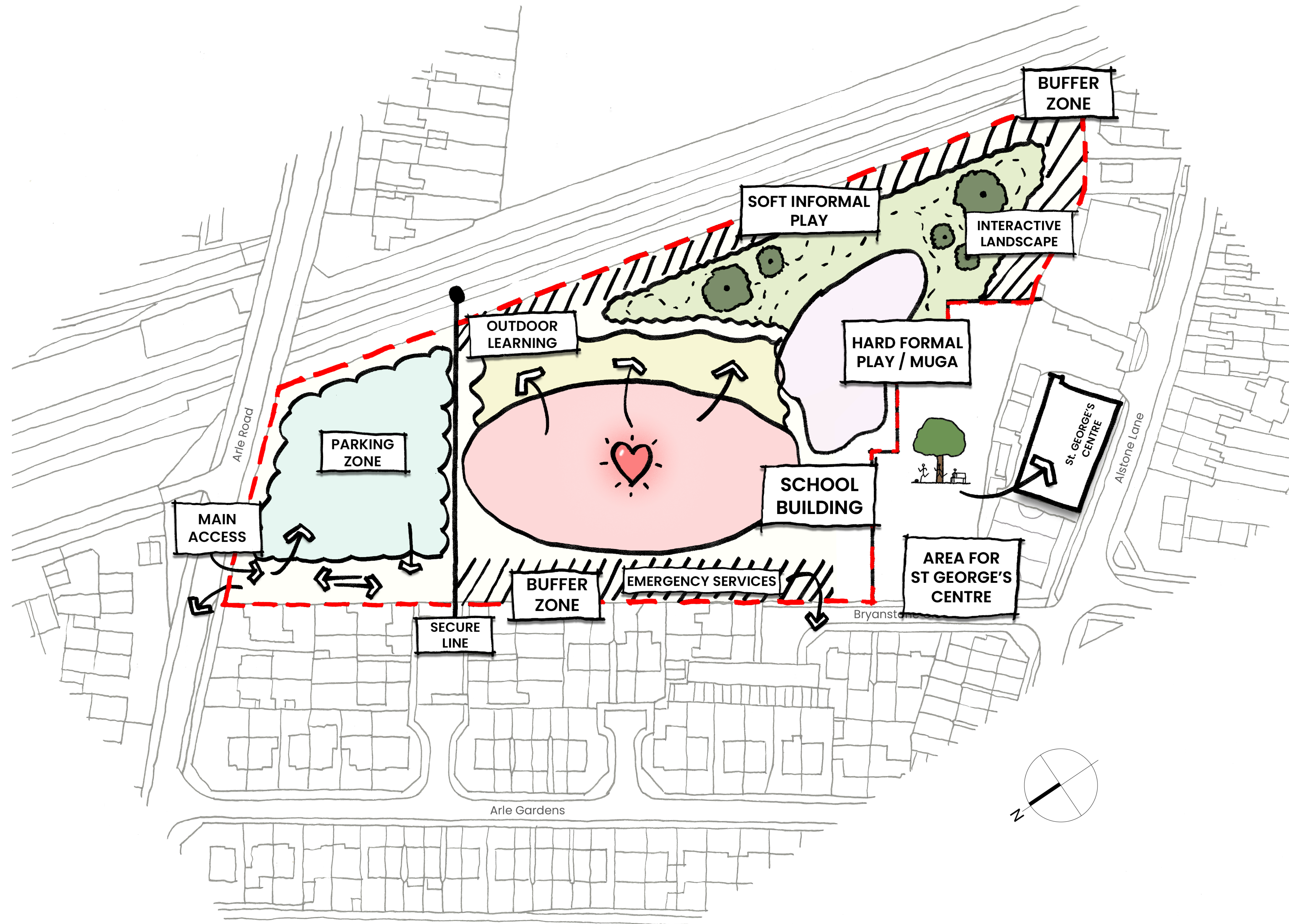
We have begun considering the site as a number of clear zones, taking into account the opportunities and constraints identified from analysis of the surrounding context.

This has outlined a concept that places the building in the heart of the site.

Clear buffer zones will be incorporated along edges facing neighbouring homes and the railway.

Key zones:

- Access and car parking
- School building zone with outdoor learning
- Outdoor play areas (hard and soft)



A New Special School in Cheltenham



Please leave us your feedback below, thank you.

Please contact us:

web: www.gloucestershire.gov.uk/chelt-special-school

email: universalcommissioning@gloucestershire.gov.uk

