



Gloucestershire
COUNTY COUNCIL

Minerals Local Plan for Gloucestershire

2018 - 2032

**Regulation 22 Proposed Changes to Policies
Map Statement**
In support of the Submission Plan

September 2018

Section 1 | Introduction

1. This is supporting statement that describes the changes to the Policies (Proposals) map for Gloucestershire, following the adoption of the Minerals Local Plan for Gloucestershire (2018 – 2032) (hereafter referred to as “the MLP”).
2. This supporting statement has been prepared to demonstrate how the plan and accompanying information complies with the requirements of regulation 22 (1) part (b) of the Town and Country Planning (Local Planning) (England) Regulations 2012 (hereafter referred to as “the Local Planning Regulations”)¹.
3. Regulation 22 part (b) of the Local Planning Regulations directs the County Council to document as part of the ‘Submission of documents and information to the Secretary of State’, the following: -
 - a submission policies map if the adoption of the local plan would result in changes to the adopted policies map.
4. A Policies (Proposals) map for Gloucestershire is already in existence online. This can be accessed from the County Council website. It currently shows the geographic extent of the adopted policies of the Gloucestershire Waste Core Strategy (WCS), the adopted saved policies of the MLP (2003) and remaining saved policies of the adopted Waste Local Plan (2004). The map also shows the proposed changes resulting from the emerging MLP.
5. The Policies (Proposals) map can be viewed at: -
<https://www.gloucestershire.gov.uk/planning-and-environment/planning-policy/policies-proposals-map/>
6. This document contains a published version of the policies (proposals) map. Due to the size of the county and number of constraints it would be difficult to present a single, meaningful map, therefore each of the applicable policies has its own map and two plans are provided for each of the allocations (one with constraints and one with out). An overview map is provided of the county to indicate a broader context of the allocations (Appendix 1).

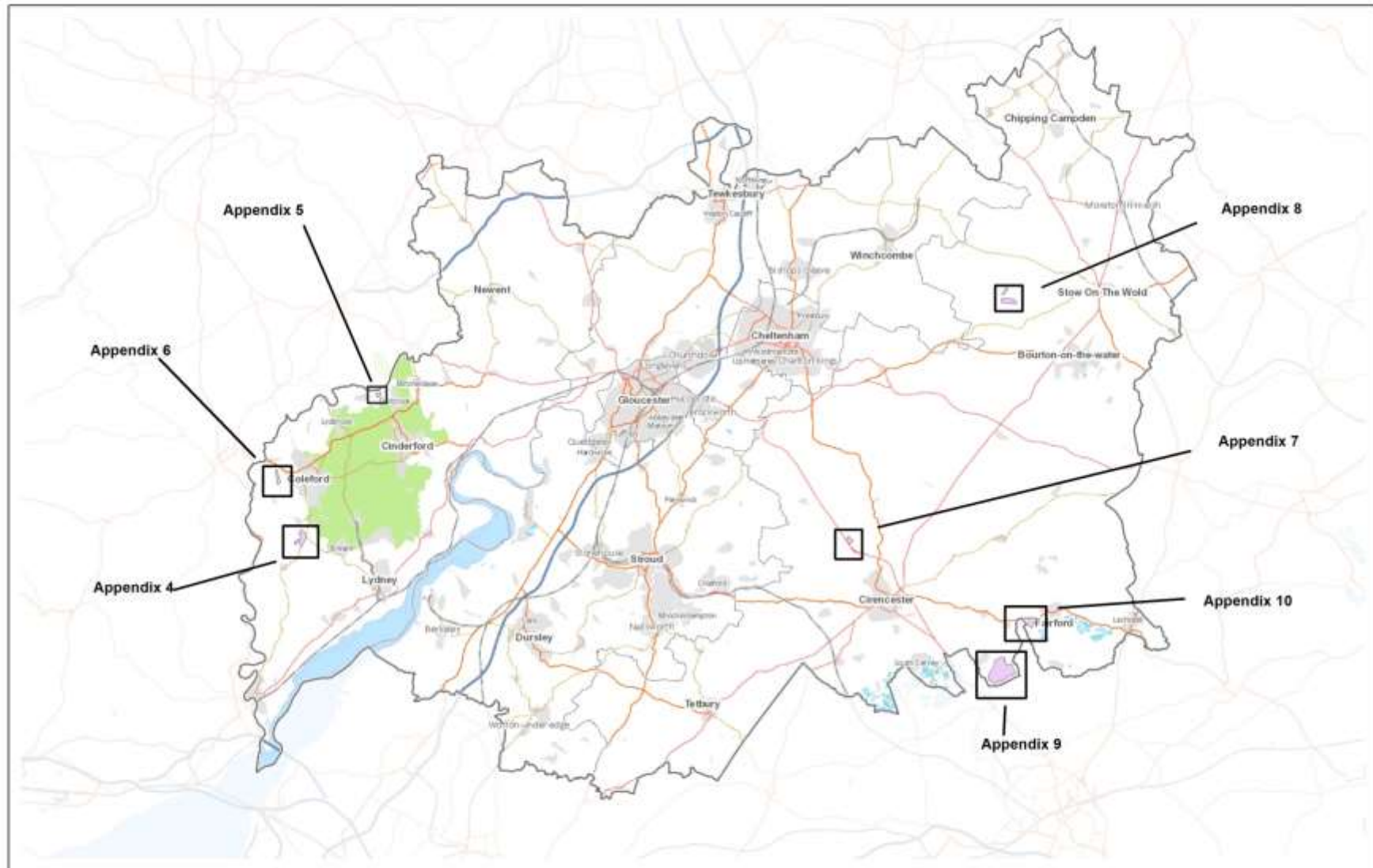
¹ The relevant part of the The Town and Country Planning (Local Planning) (England) Regulations 2012 can be obtained at : -
<http://www.legislation.gov.uk/uksi/2012/767/part/6/made>

Section 2 | Proposed changes to the Policies (Proposals) map

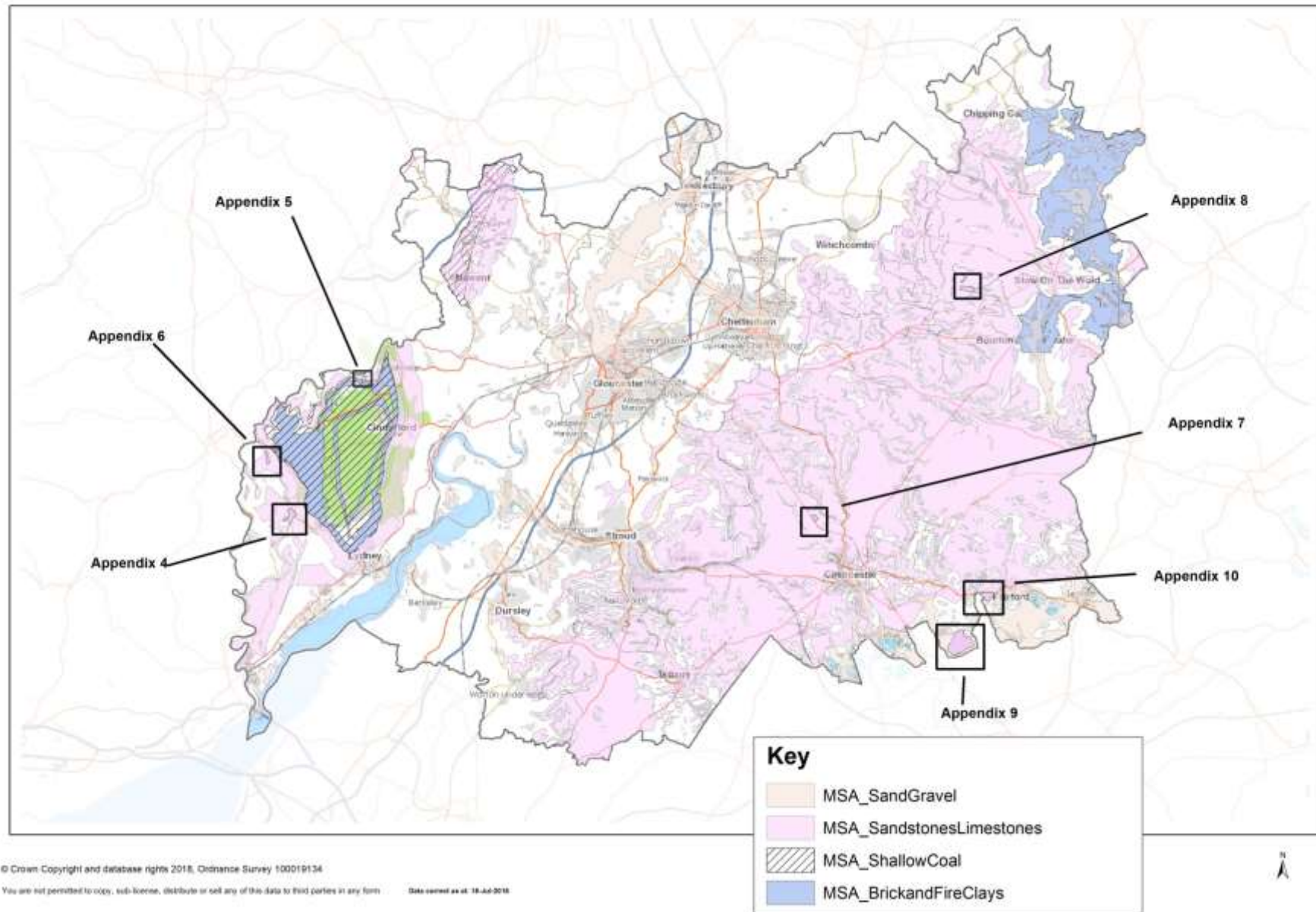
Policy	Proposed Changes
MS01 (Non-minerals development within MSAs) <i>See Appendix 2a Mineral Safeguarding Areas</i> <i>Appendix 2b Mineral Consultation Area</i>	<p>The following layers are to be illustrated on the map:</p> <ul style="list-style-type: none"> Mineral Safeguarding Area for Brick and Fire Clays Mineral Safeguarding Area for Shallow Coal Mineral Safeguarding Area for Sandstones and Limestones Mineral Safeguarding Area for Sand and Gravel Mineral Consultation Area for all minerals <p>The adopted 2003 Mineral Consultation Area (MCA) is to be deleted</p>
MS02 (Safeguarding mineral infrastructure) <i>See Appendix 3</i>	<p>Two layers are to be illustrated on the map:</p> <ul style="list-style-type: none"> Mineral Infrastructure Safeguarded Sites 150m Buffer of Mineral Infrastructure Safeguarded Sites
MW01 (Aggregate Provision) MA01 (Aggregate working within allocations) <i>See Appendices 1 and 4-10)</i>	<p>The 7 new allocations will be added to the map</p> <p>All of the adopted 2003 MLP allocations will be deleted.</p>
MW02 (Natural building stone) MW03 (Clay for civil engineering purposes) MW04 Brick clay MW05 Coal	<p>No changes required but may have some connections to the relevant resource blocks contained within the Mineral Safeguarding Areas</p>
DM04 Flood Risk <i>See Appendix 11</i>	<p>This policy relates to the Flood zones 2, 3a and 3b illustrated on the policies map</p>
DM06 (Biodiversity and geodiversity) <i>See Appendix 12 (a-d)</i>	<p>This policy relates to the following layers illustrated on the policies map</p> <ul style="list-style-type: none"> Ramsar sites (international wetlands) Special Protection Areas Sites of Special Scientific Interest National Nature Reserves Key Wildlife Sites Key Wildlife Sites (rivers) Local Nature Reserves Ancient Woodland Strategic Nature Areas
DM08 Historic Environment <i>See Appendix 13</i>	<p>This policy relates to the following layers illustrated on the policies map</p> <ul style="list-style-type: none"> Listed Buildings Registered Battlefields Registered Parks and Gardens Scheduled Monuments
DM09 Landscape <i>See Appendix 14a, b and c</i>	<p>This policy relates to the following layers illustrated on the policies map</p> <ul style="list-style-type: none"> Areas of Outstanding Natural Beauty Various Vales Landscape Characters Forest of Dean Landscape Characters Cotswolds AONB Landscape Characters County Landscape Characters
DM10 Gloucester-Cheltenham Green Belt <i>See Appendix 15</i>	<p>This policy relates to the Green Belt layer on the policies map</p>
DM11 Aerodrome Safeguarding and Aviation Safety <i>See Appendix 16</i>	<p>This policy relates to all military and civilian aerodrome safeguarded areas which fall within the administrative boundary Gloucestershire. Once GIS licensing arrangements for the layers have been clarified these will be added onto the policies map.</p>

<div>SR01 Maximising the use of secondary and recycled aggregates</div> <div>MW06 Ancillary development</div> <div>MA02 Aggregate working outside of allocations</div> <div>DM01 Amenity</div> <div>DM02 Cumulative impact</div> <div>DM03 Transport</div> <div>DM05 Water environment</div> <div>DM07 Soils</div> <div>MR01 Restoration, aftercare and facilitating beneficial after-uses</div>	<div>No changes required the policies apply to the entire county.</div>
--	---

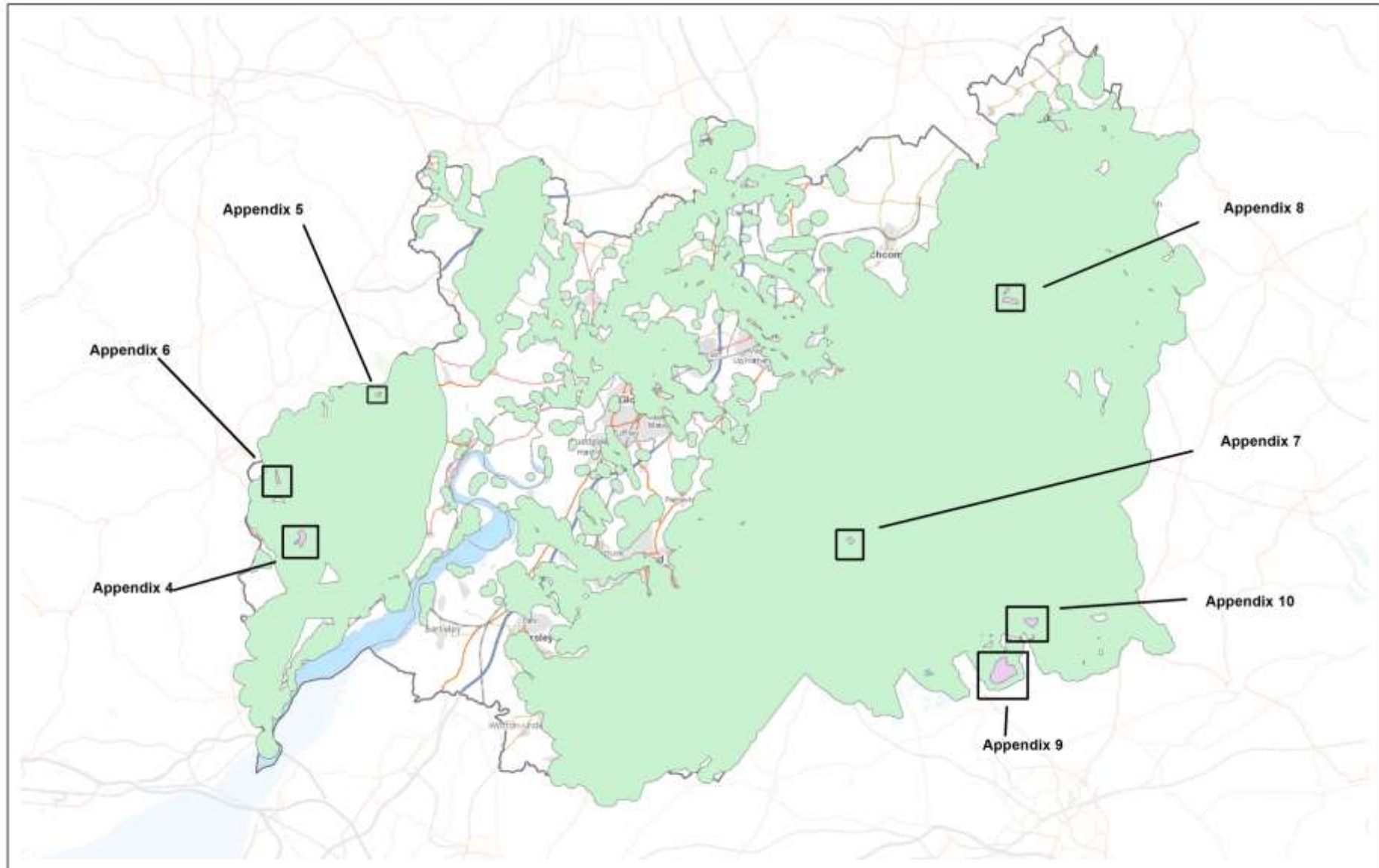
Appendix 1: Overview of Allocations



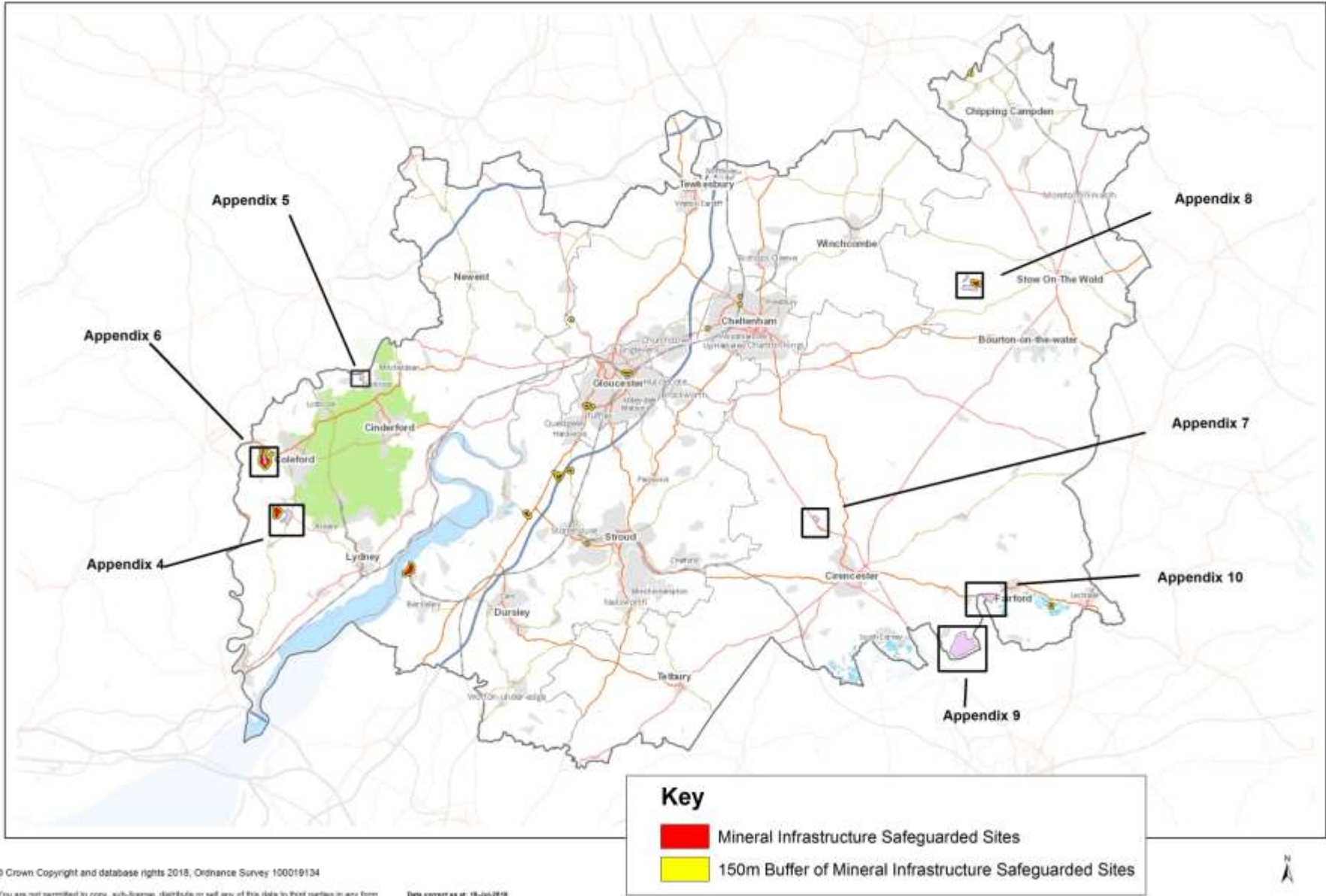
Appendix 2a: Mineral Safeguarding Areas



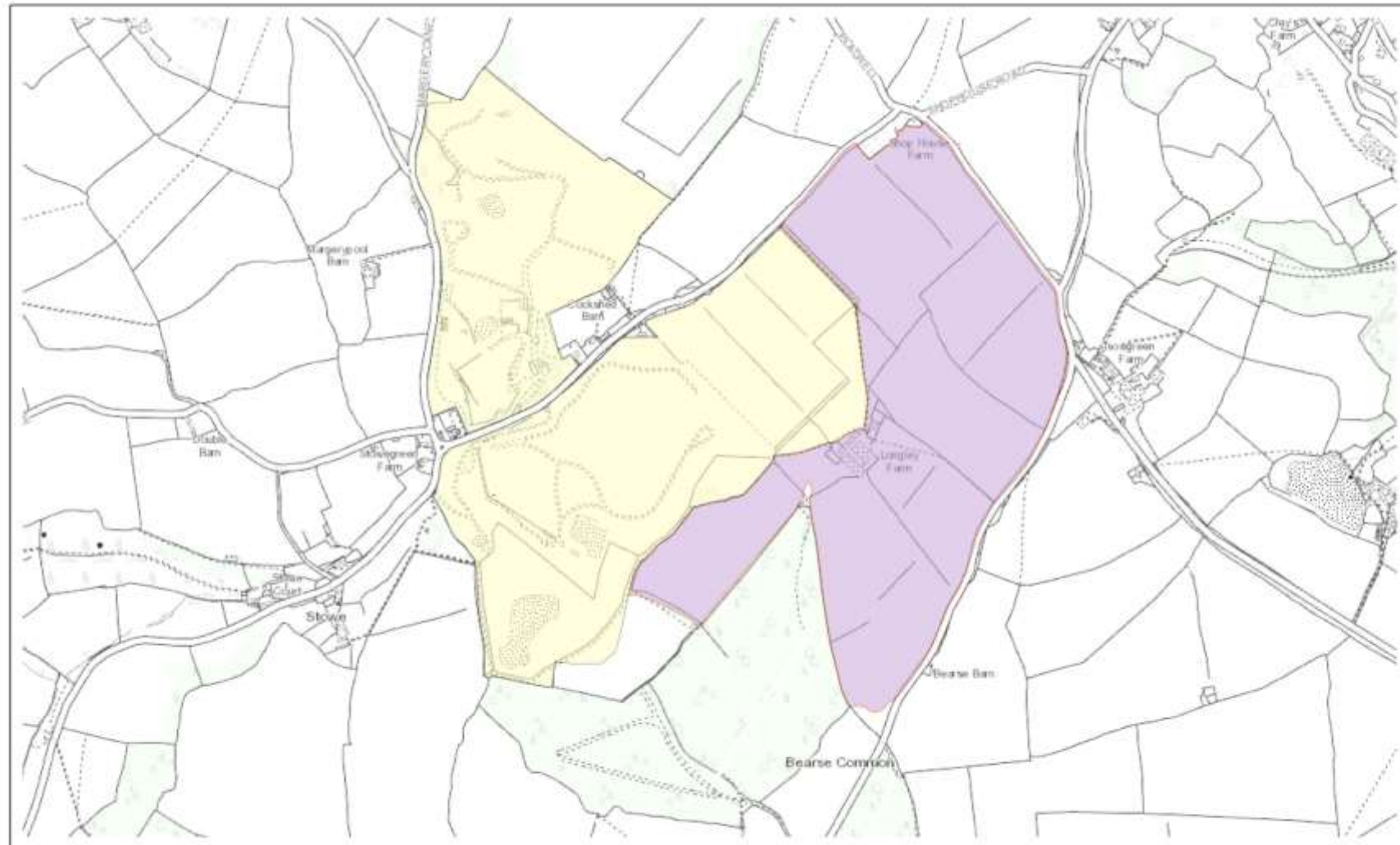
Appendix 2b: Mineral Consultation Area



Appendix 3: Safeguarded Minerals Infrastructure



Appendix 4: Allocation 01 Land east of Stowe Hill Quarry



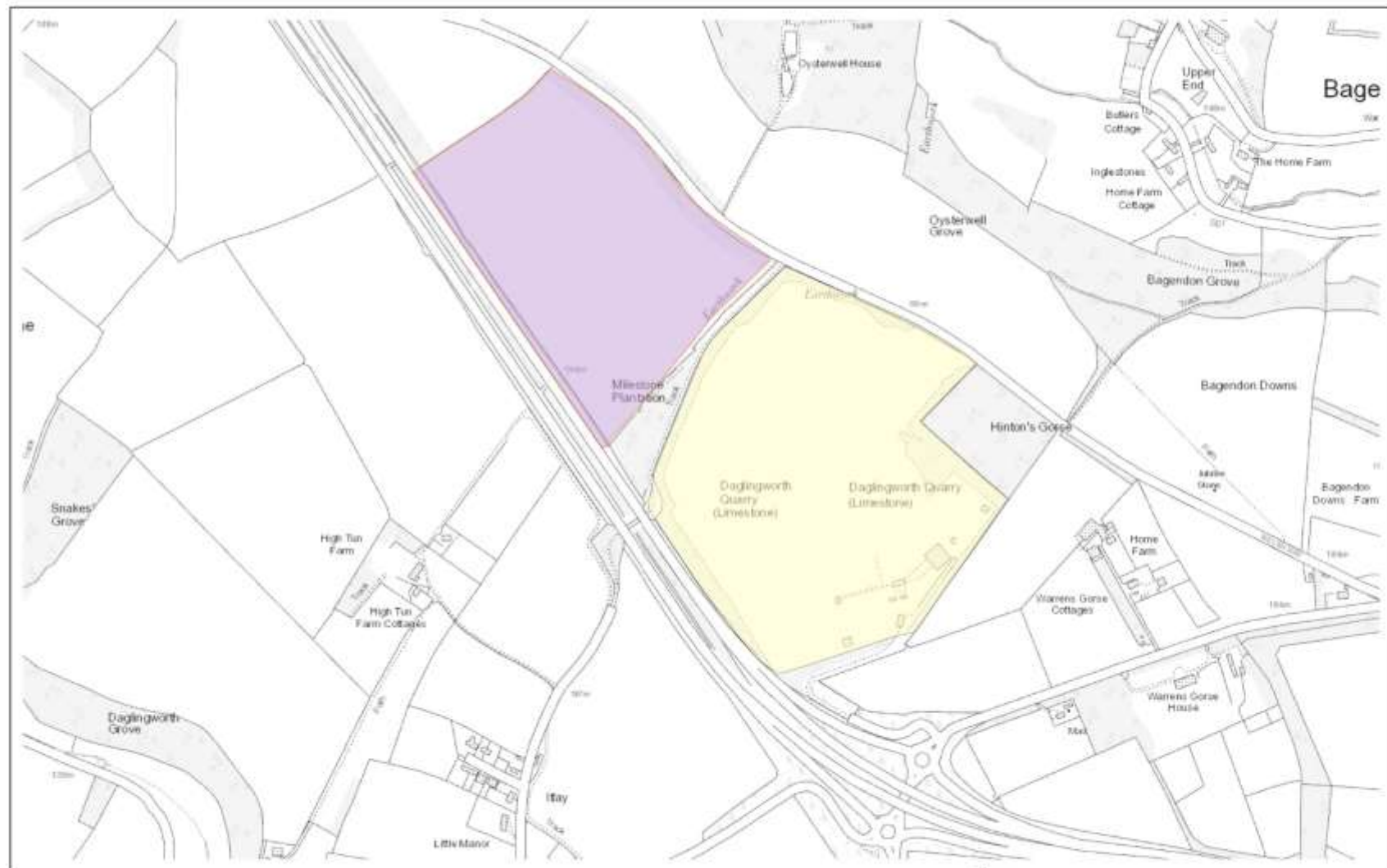
Key

Extant Quarry Permissions as at August 2017

Allocation Area



Appendix 7: Allocation 04: Land northwest of Daglingworth Quarry

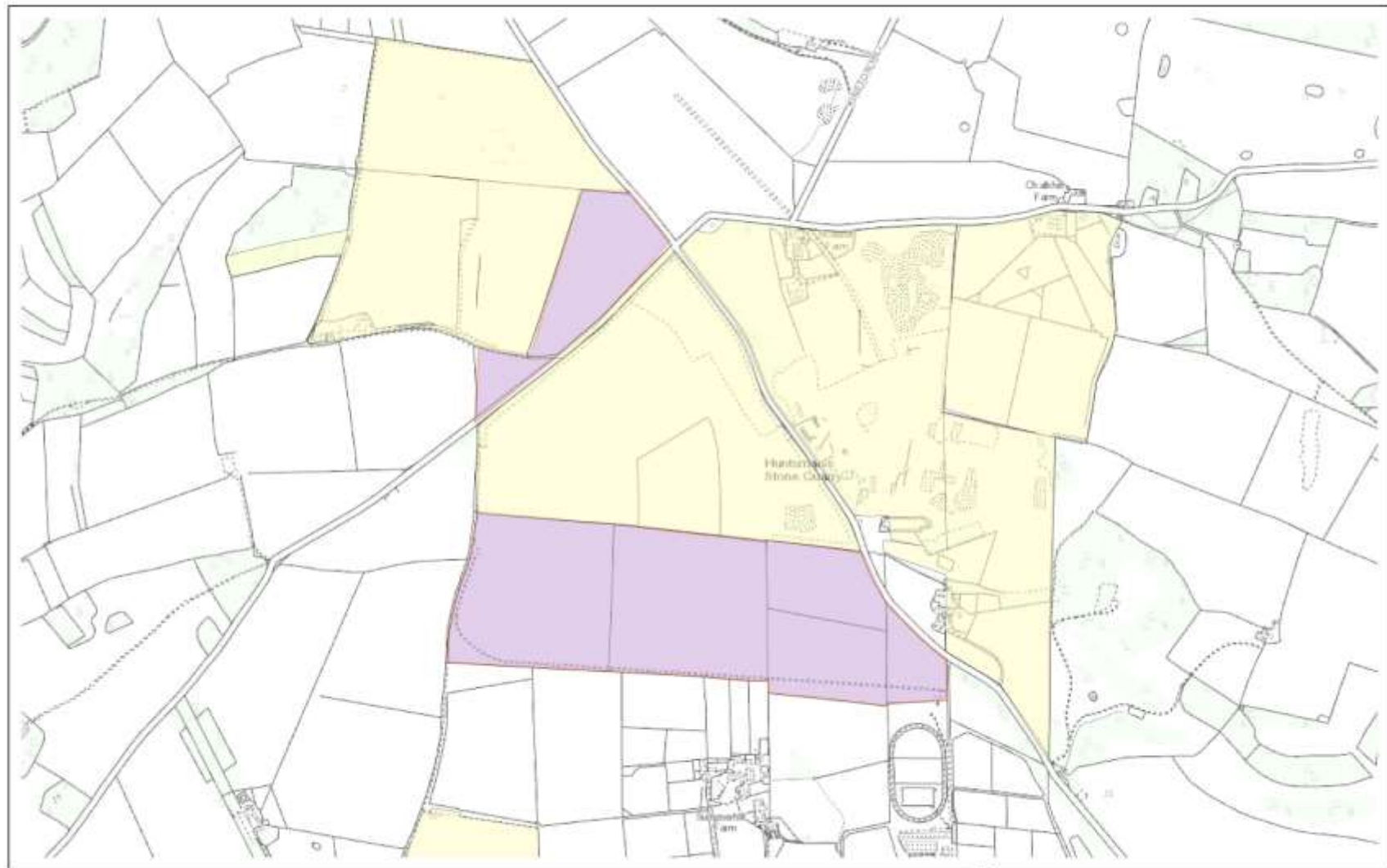


Key

- Extant Quarry Permissions as at August 2017
- Allocation Area



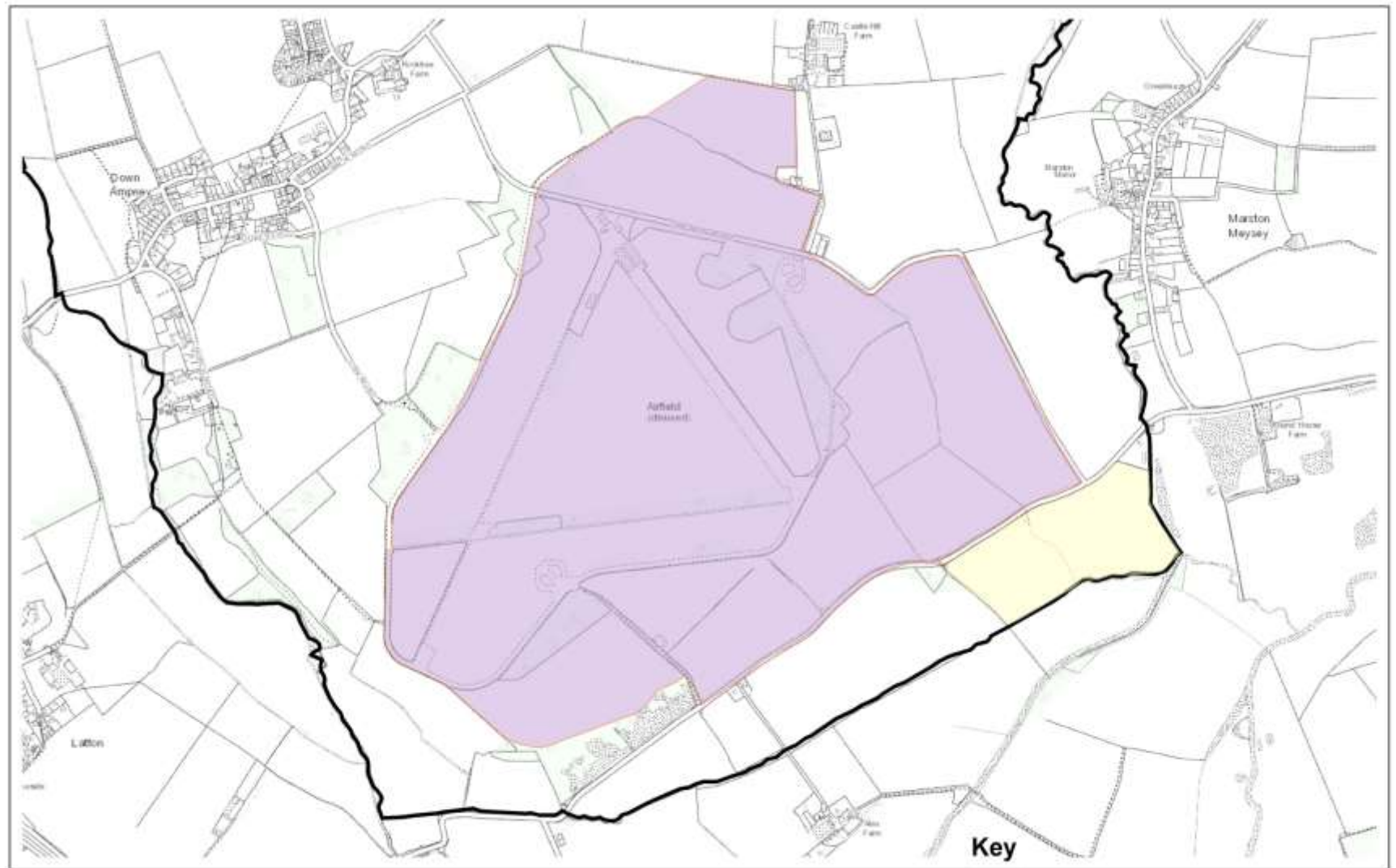
Appendix 8: Allocation 05: Land south and west of Naunton Quarry

**Key**

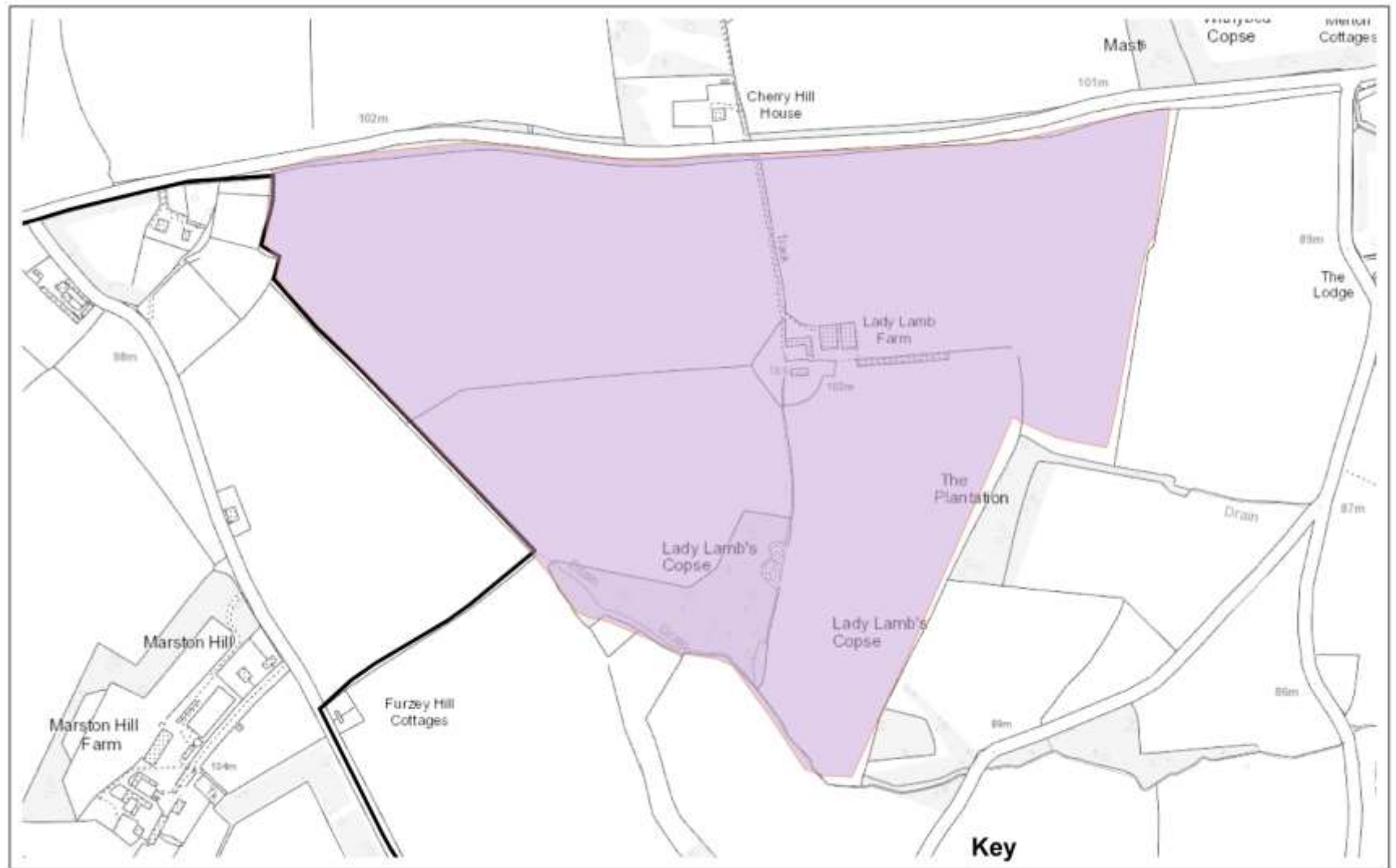
- Extant Quarry Permissions as at August 2017
- Allocation Area



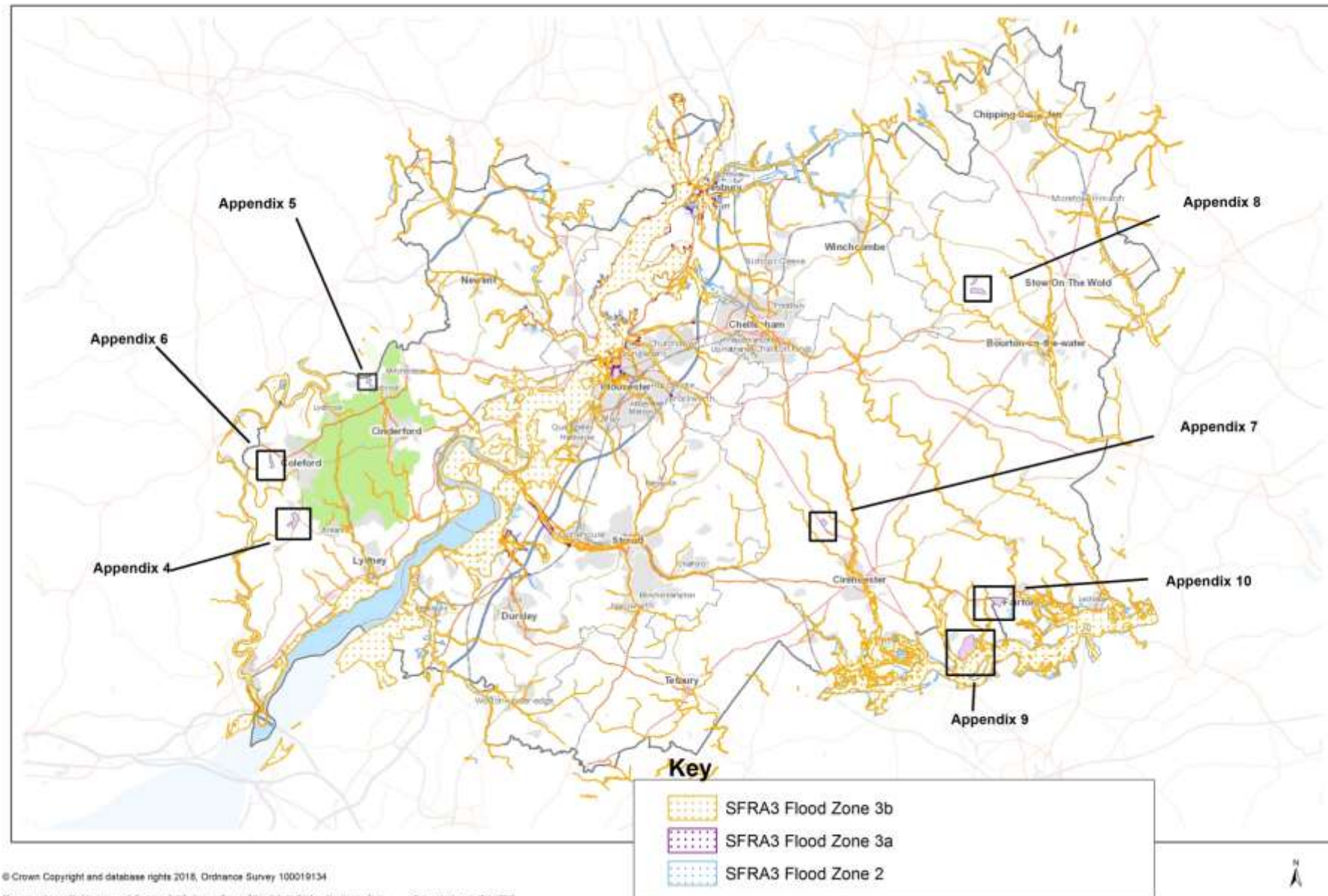
Appendix 9: Allocation 06: Land south east of Down Ampney



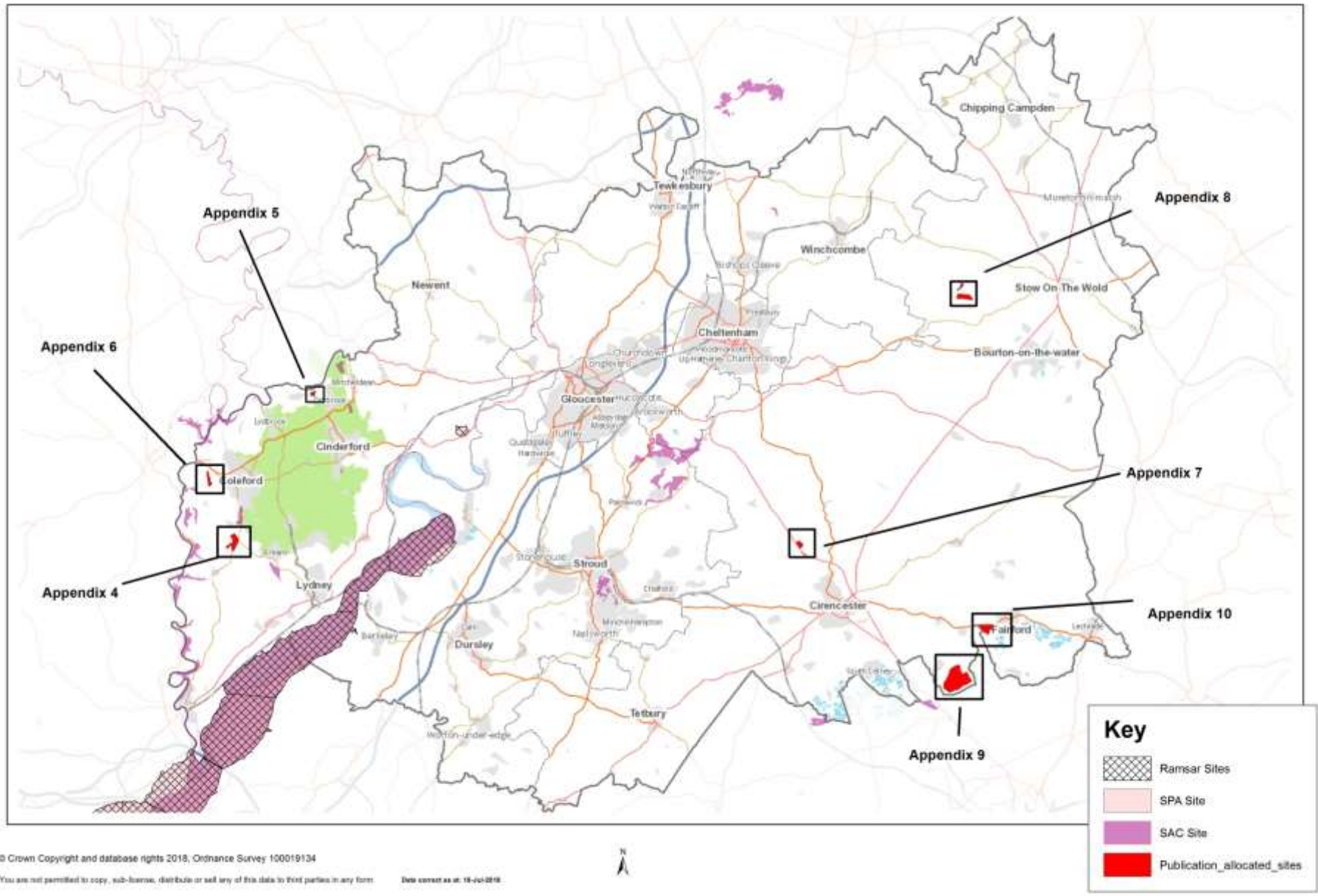
Appendix 10: Allocation 07: Land at Lady Lamb Farm, west of Fairford



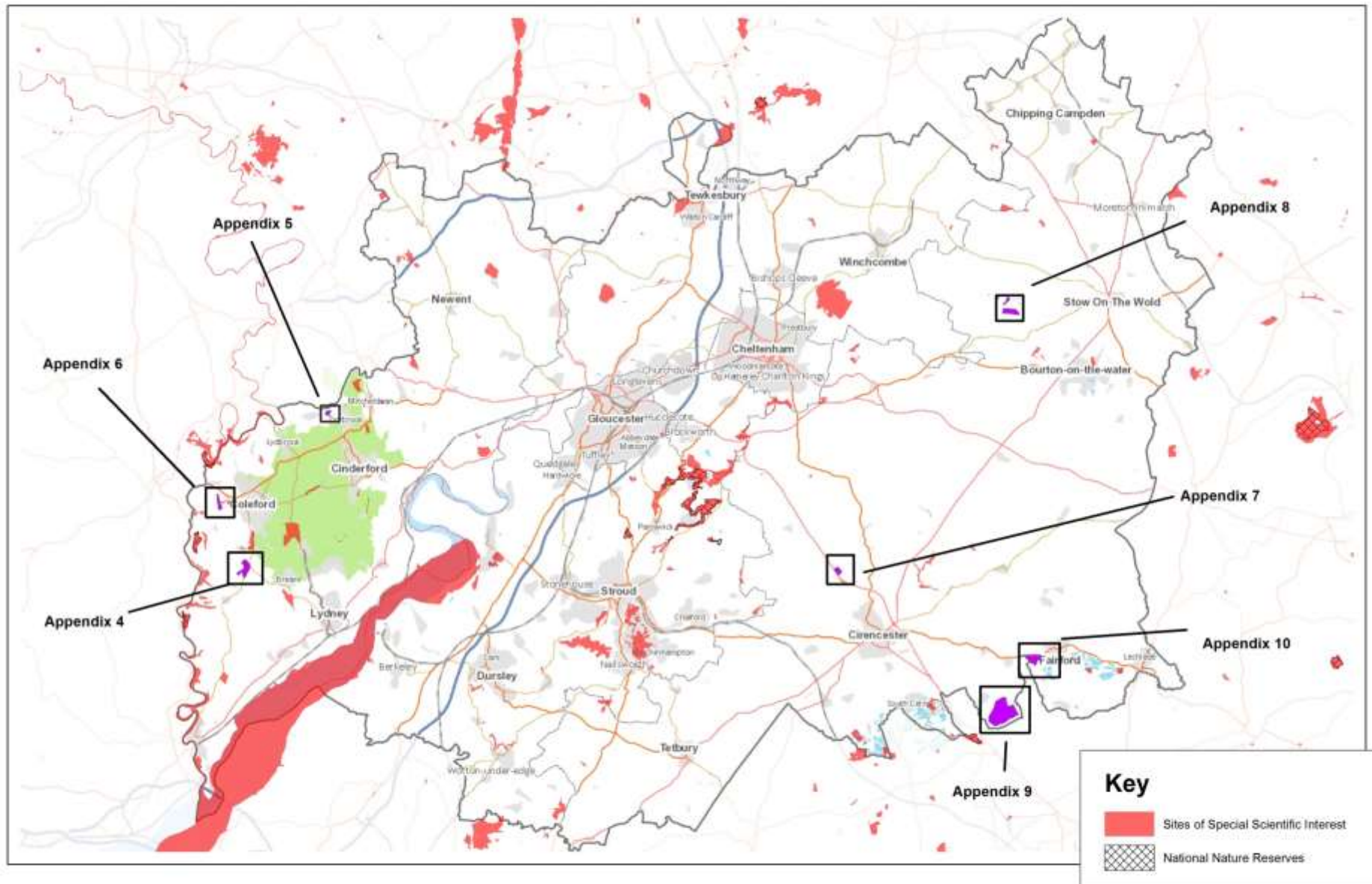
Appendix 11: Flood Risk



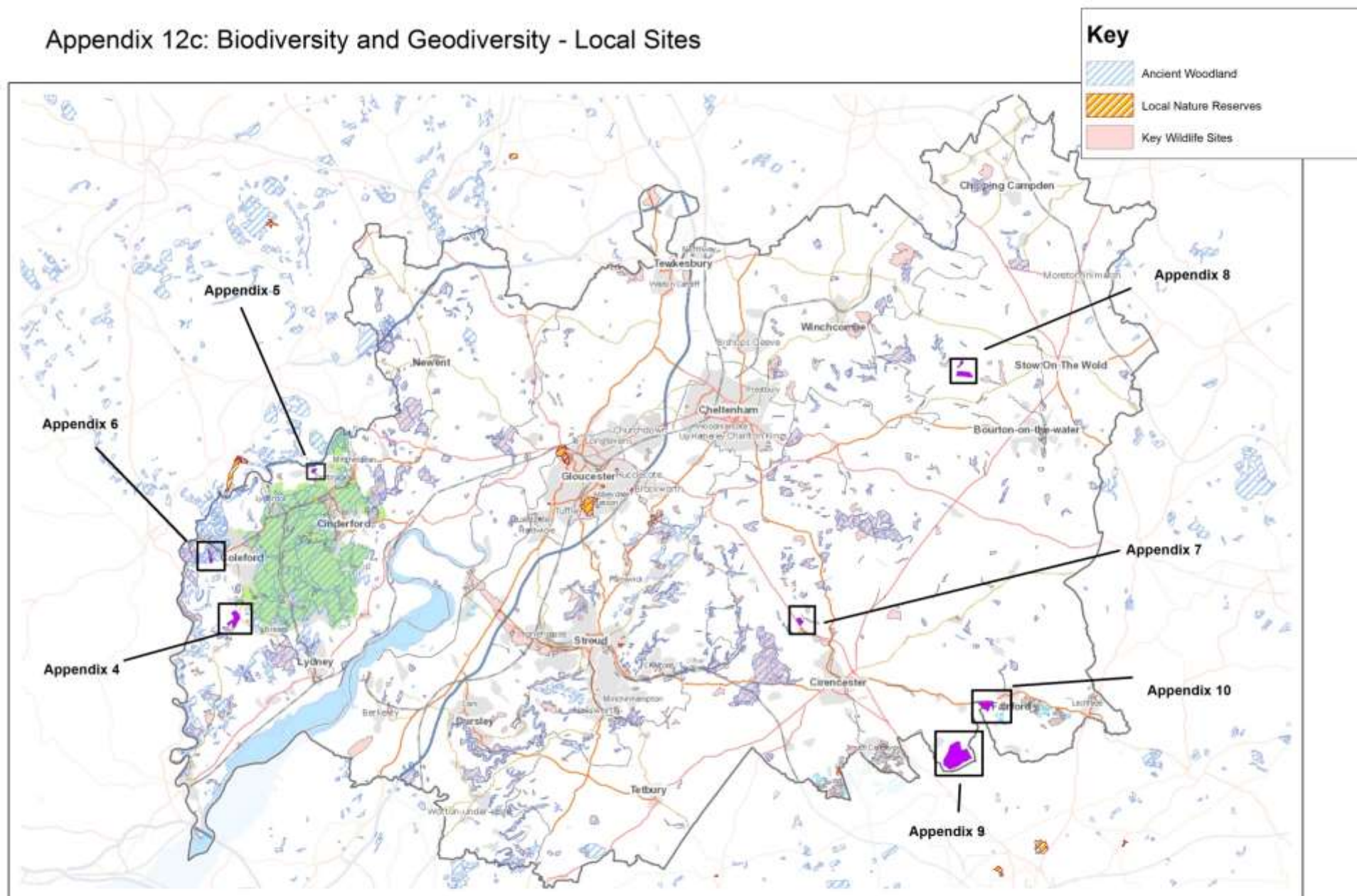
Appendix 12a: Biodiversity and Geodiversity - International Sites



Appendix 12b: Biodiversity and Geodiversity - National Sites



Appendix 12c: Biodiversity and Geodiversity - Local Sites



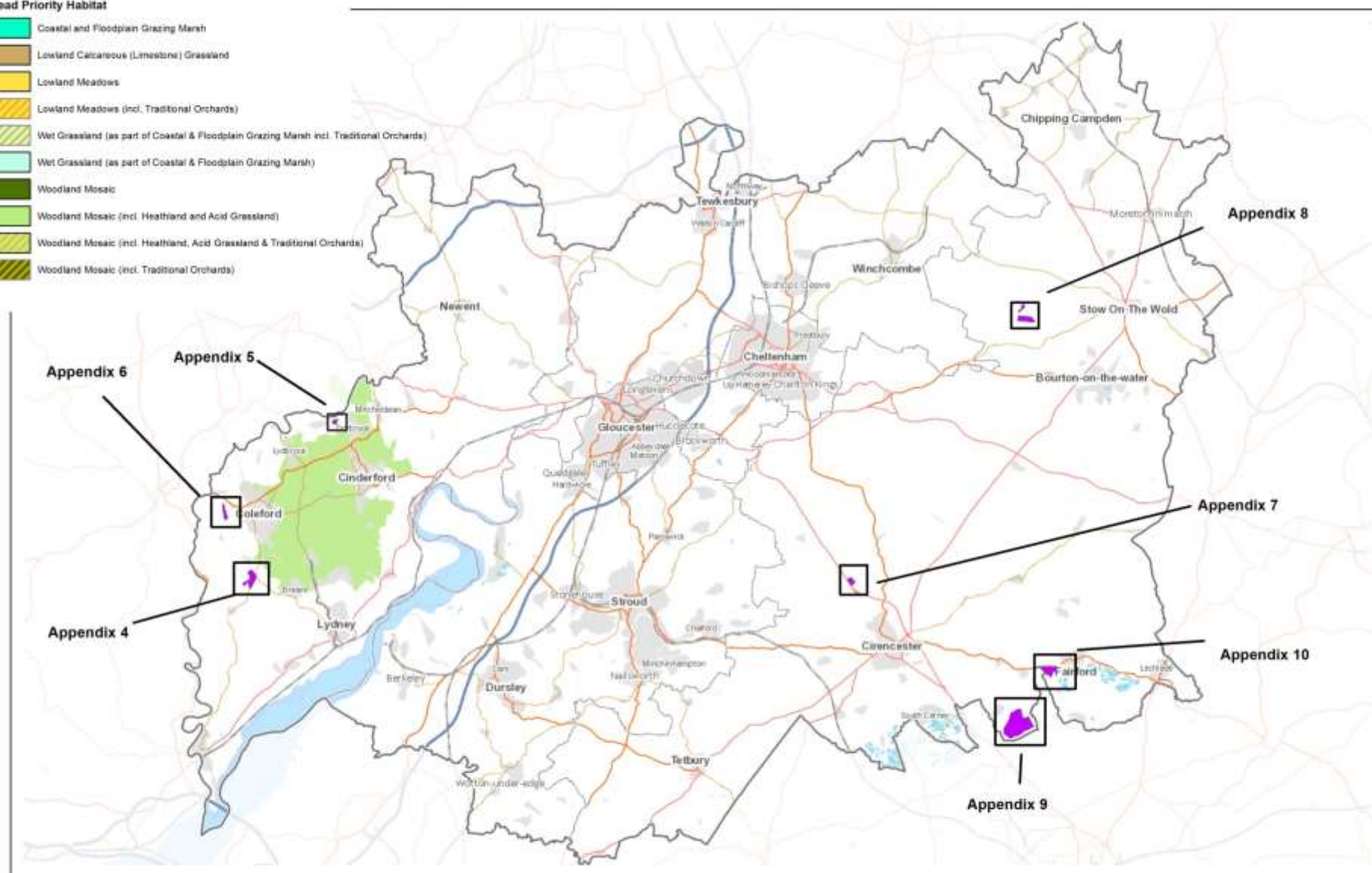
Key

Glos. Nature Map SNAs

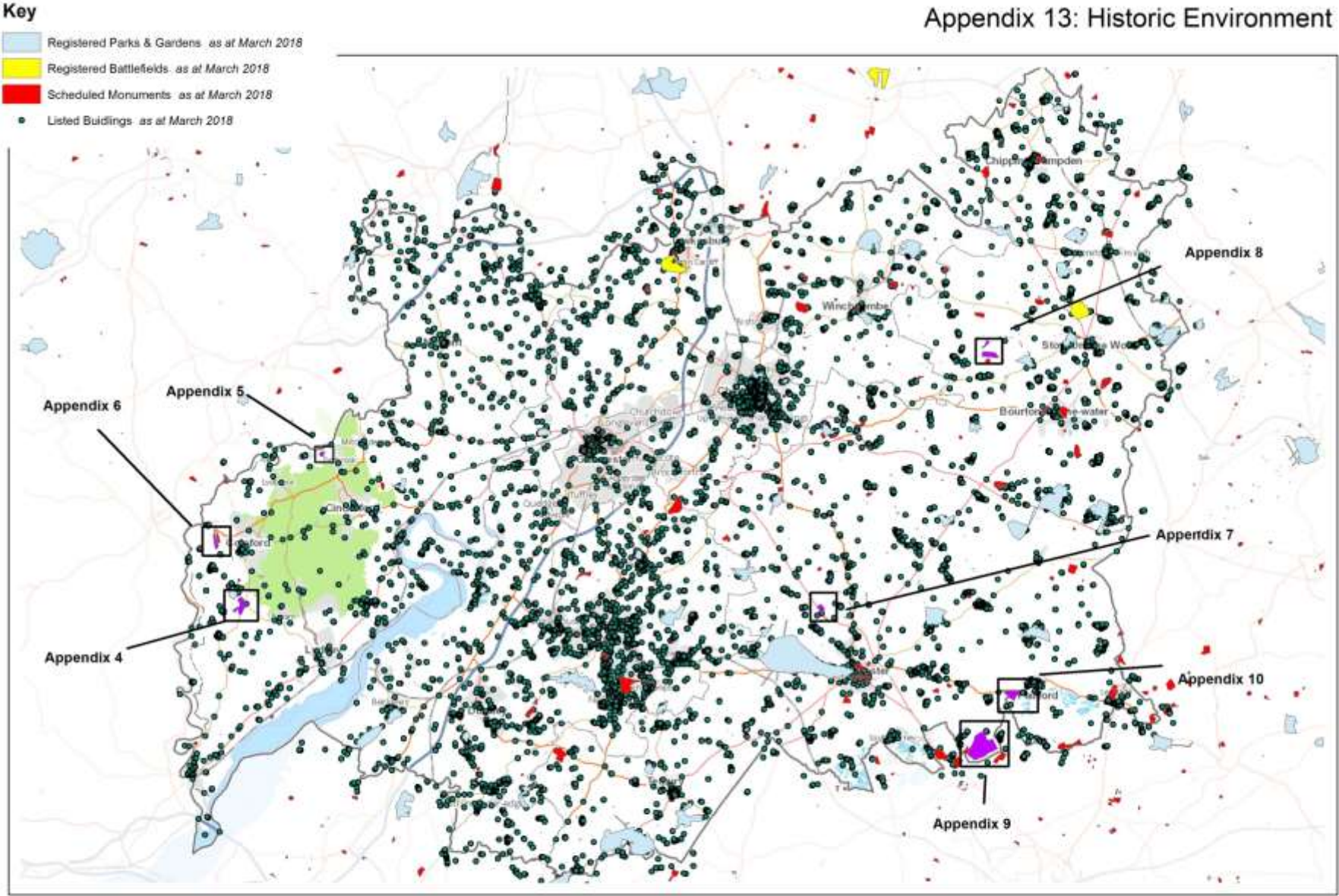
Lead Priority Habitat

- Coastal and Floodplain Grazing Marsh
- Lowland Calcareous (Limestone) Grassland
- Lowland Meadows
- Lowland Meadows (incl. Traditional Orchards)
- Wet Grassland (as part of Coastal & Floodplain Grazing Marsh incl. Traditional Orchards)
- Wet Grassland (as part of Coastal & Floodplain Grazing Marsh)
- Woodland Mosaic
- Woodland Mosaic (incl. Heathland and Acid Grassland)
- Woodland Mosaic (incl. Heathland, Acid Grassland & Traditional Orchards)
- Woodland Mosaic (incl. Traditional Orchards)

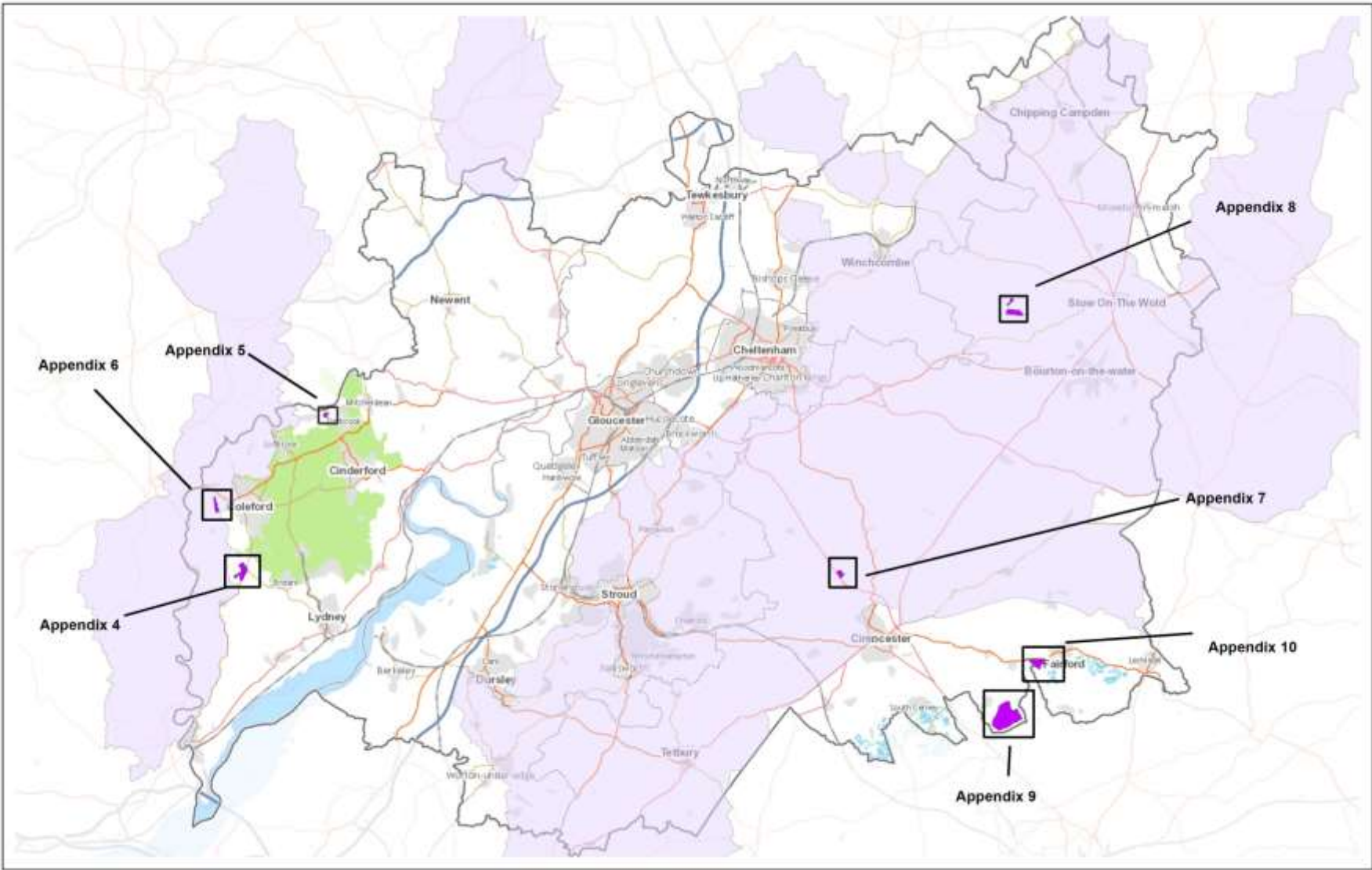
Appendix 12d: Biodiversity and Geodiversity - Nature Map Strategic Nature Areas



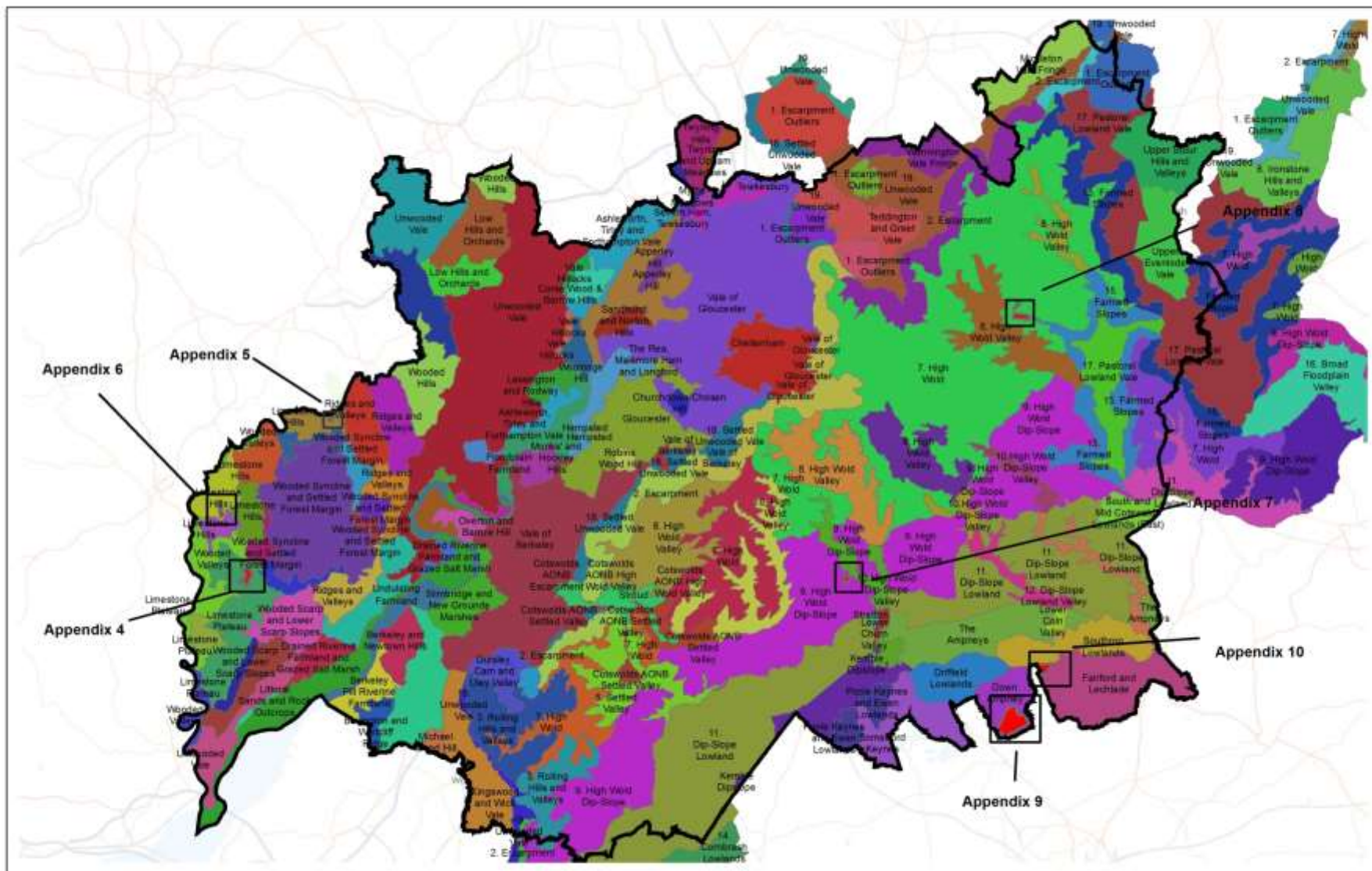
Appendix 13: Historic Environment



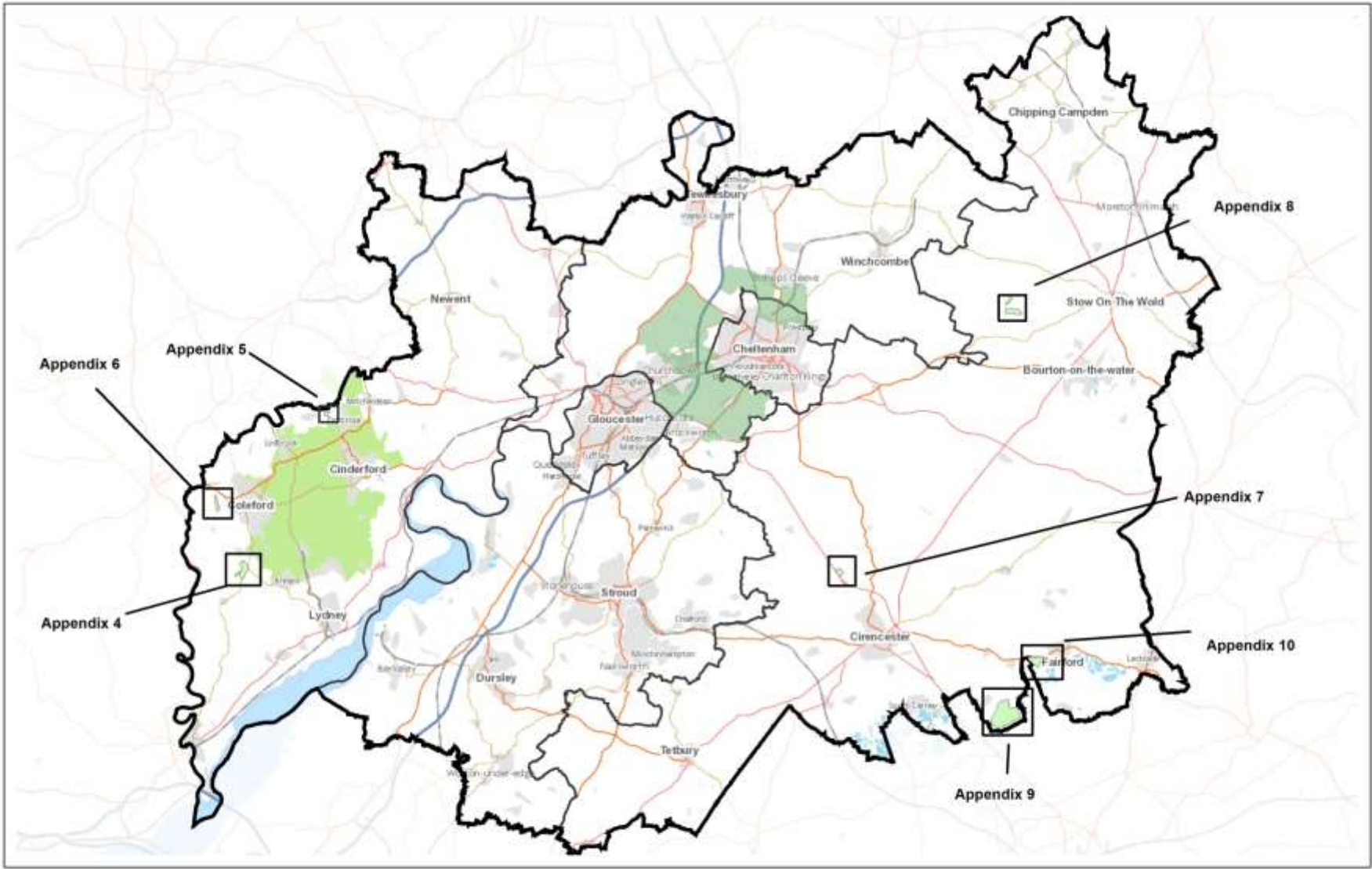
Appendix 14a: Landscape - Areas of Outstanding Natural Beauty



Appendix 14c: Landscape - Local Landscape Character Areas



Appendix 15: Green Belt



Key

 Gloucester Cheltenham Green Belt