

**POLLING
STATION**

Welcome

Pete Bungard, Chief Executive

Congratulations!

County
Elections
2017

Candidates 224

Seats 53

Years 4



County
Elections
2017



This is Gloucestershire

County
Elections
2017



This is Gloucestershire

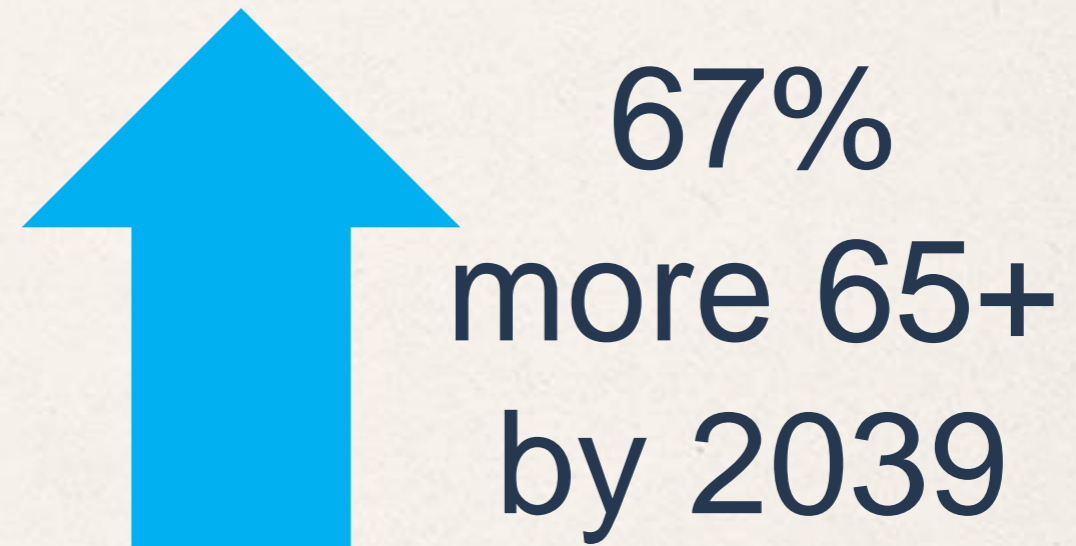
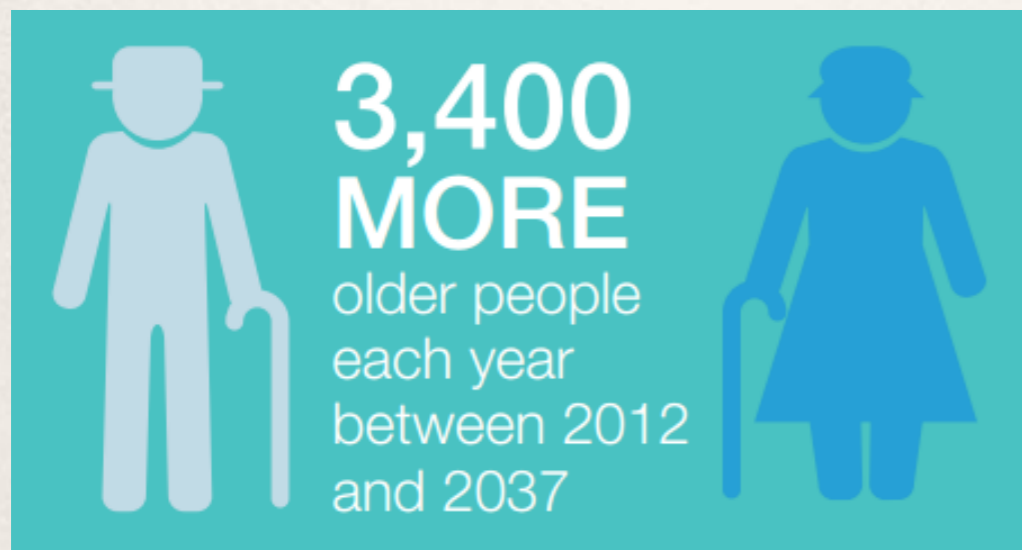


Find out more?
Local Insight Profile for your Division



This is Gloucestershire too!

Our ageing population



.... but only 1.4% increase in 18 – 65 population by 2039

Housing

By 2031



58,000 more homes

- Used to manage 2,500/yr
- Recent years 1,800/yr
- 4,200/yr ???

And if we fail:

- Price inflation
- Young people miss out
- Economy suffers

Hesters Way

Kingsholm
& Wotton

Barton &
Tredworth

Moreland

St Paul's

Westgate

St Mark's

Matson &
Robinswood

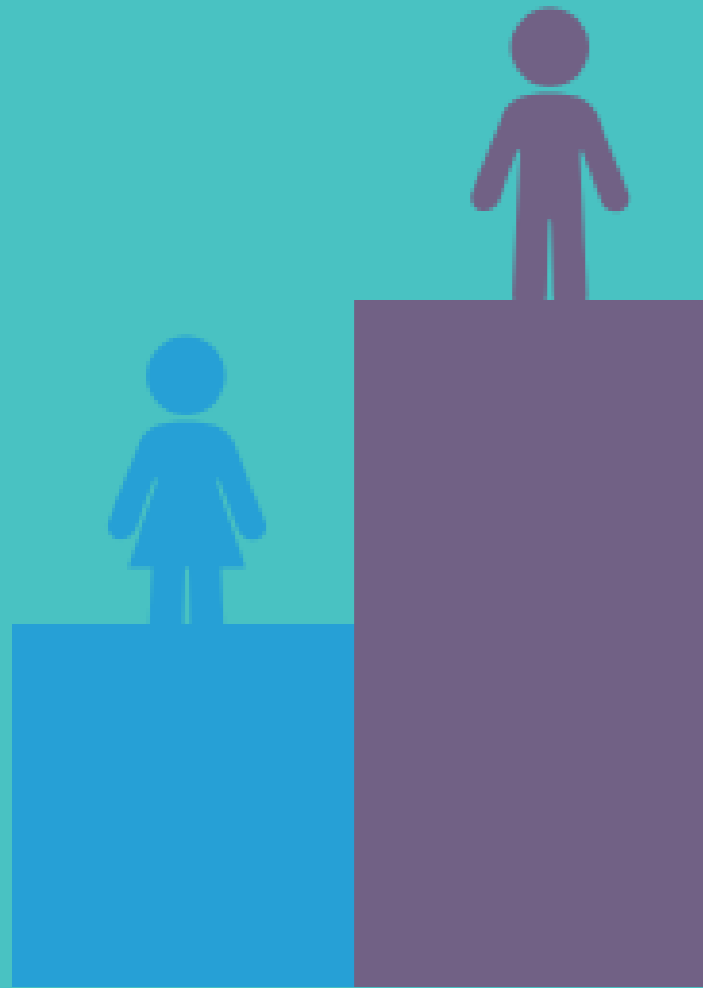
Podsmead

Deprivation

the 20,643

10% worst nationally

Where?



RISING NUMBERS OF CHILDREN

are leading to increased
demand for school
places and other services

*School exclusions:
13 per 10,000 ... 160 young people
Double national rate WHY???*

Children in care



602

Need **FEWER**
CHILDREN
IN CARE

45%
care leavers
end up as
NEET

Employment

County
Elections
2017

Working with the private, public
and voluntary sectors to generate

34,000 and over **5,000 NEW**
NEW JOBS **APPRENTICESHIPS**

Deliver over
47,000
new homes



Supporting
the creation of

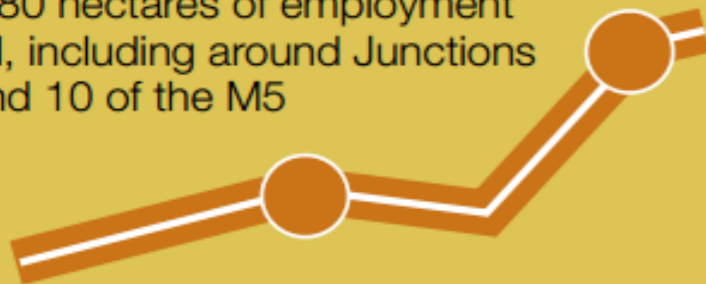
200 NEW
BUSINESSES

between 2016 and 2021



DEVELOPMENT

of 180 hectares of employment
land, including around Junctions
9 and 10 of the M5



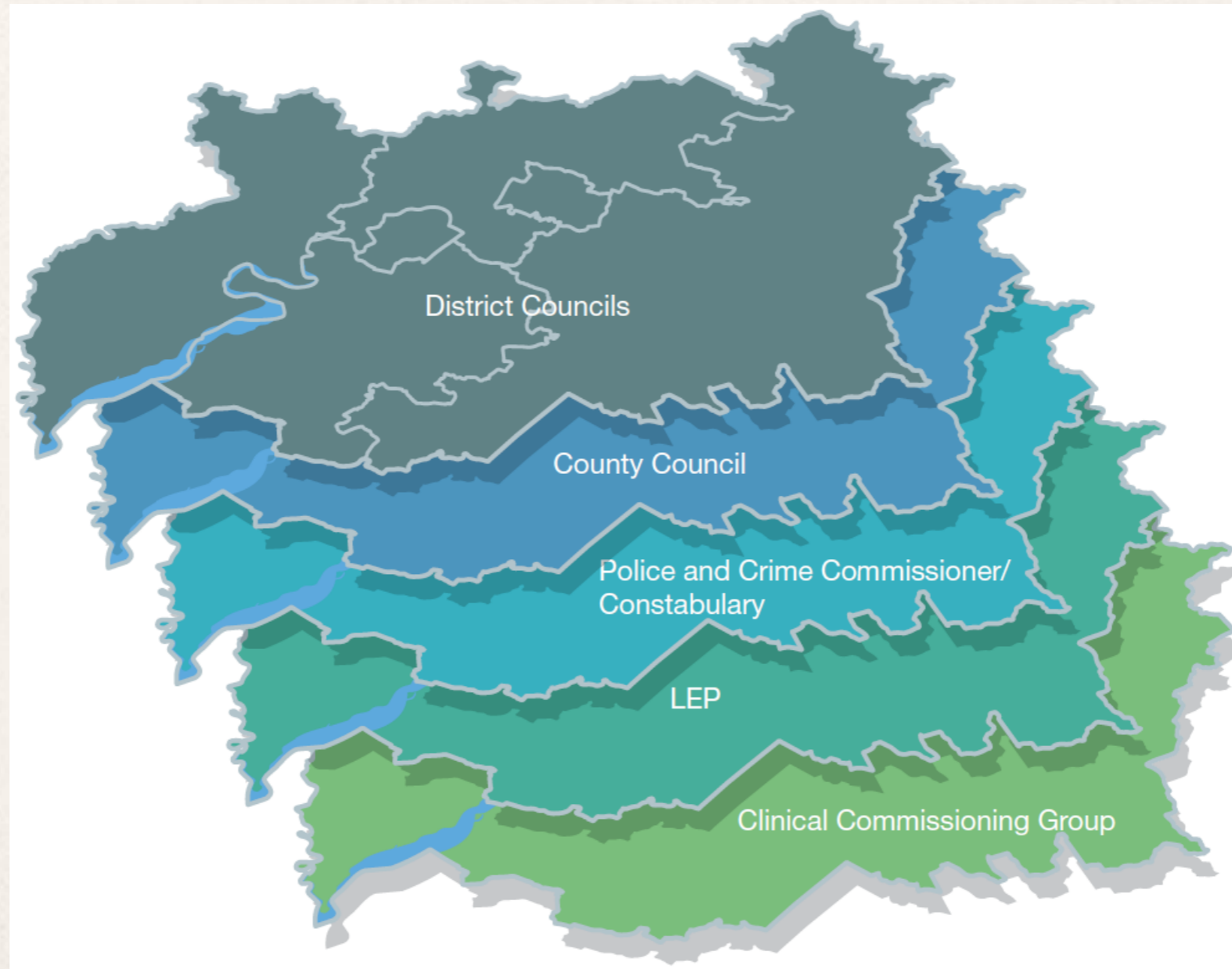
Aim to drive
GROWTH
of **4.7%**
GVA per annum
(£500m) by 2022

Great LEP Growth Plan

100% reliant on local
authority driven planning
system delivering
homes

Potential for Devolution ...
something special

County
Elections
20**17**



One boundary > one vision

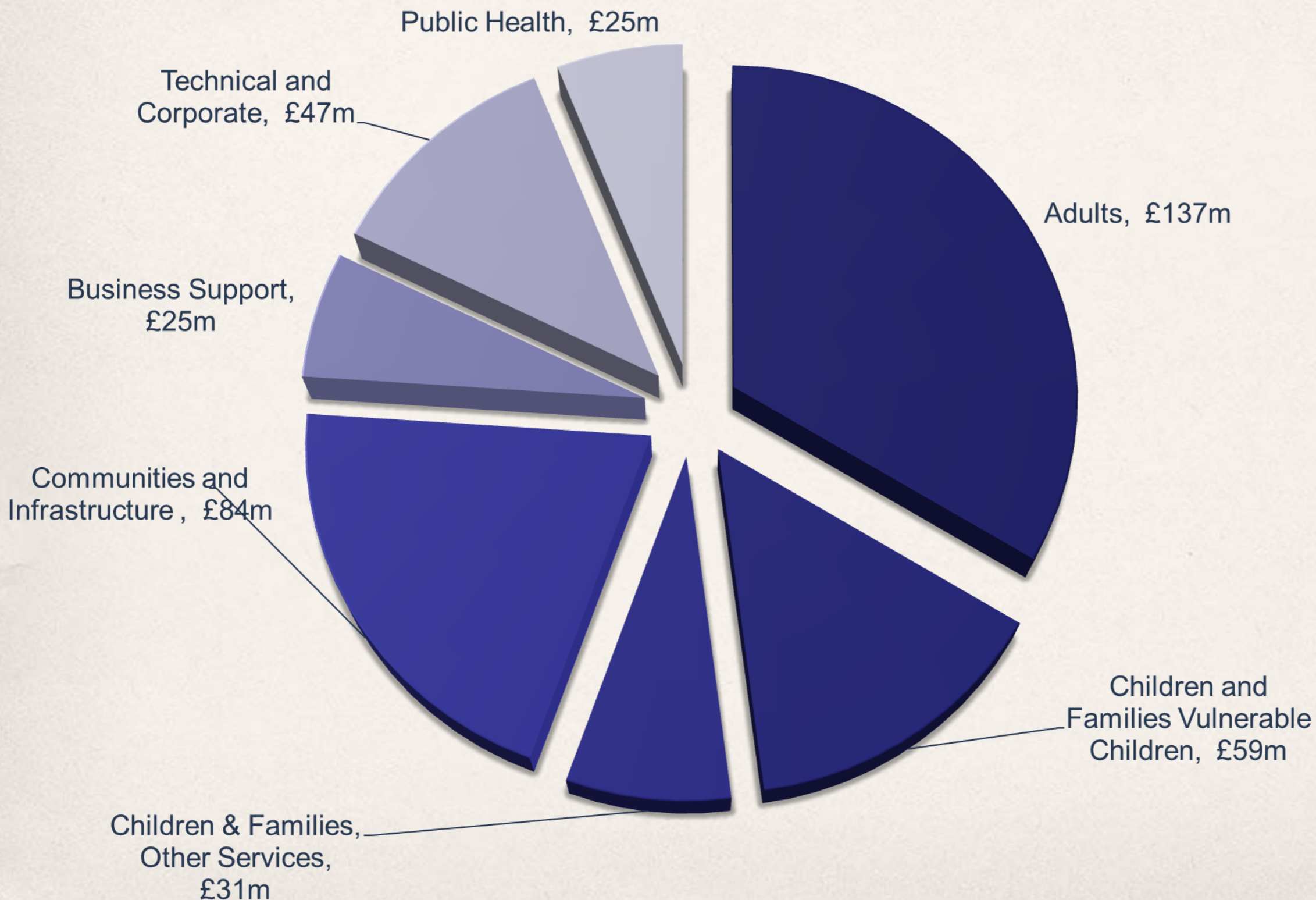
We provide services for over 600,000 people

County
Elections
2017

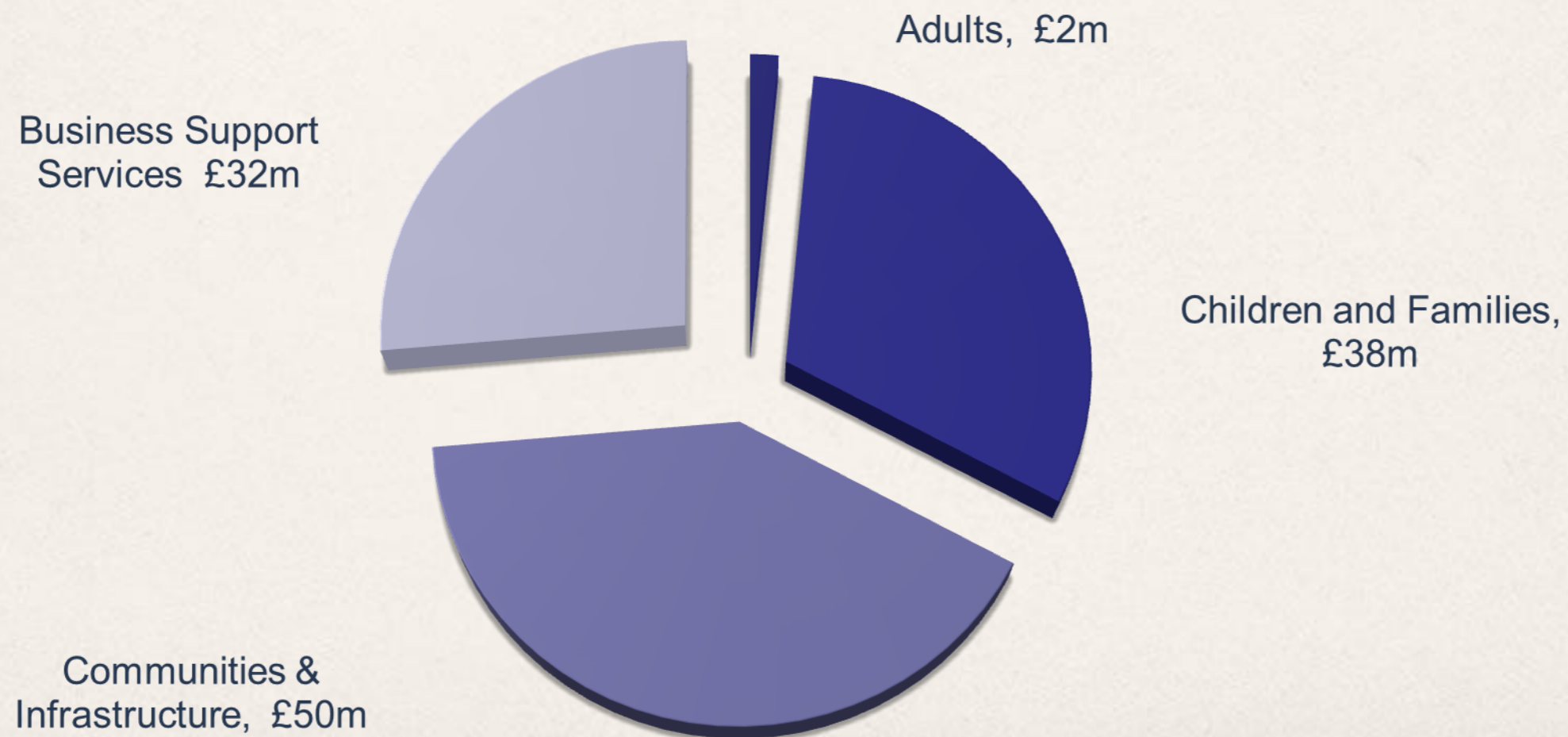
- Adult social care
- Children's social care
- Waste disposal
- Highways
- Transport services
- Learning disabilities support
- Support services to schools
- Public Health
- And many more

With a budget of £408 million

2017-18 Revenue Budget As approved by County Council February 2017



2017-18 Capital Programme Approved by County Council February 2017



Future forecast

- Grant funding is forecast to continue reducing.
- Service demands continue to rise.
- The mix of the two gives rise to a funding gap which has averaged at approximately £25 million per annum, peaking at £35 million this year.
- Modelling forecasts a gap of between £50 to £75 million depending on tax levels over the next three years.

HEADLINES:

4 June 2009

County
Elections
2017

5,456 FTE (ex fire & schools)

£5-10m per year in efficiencies

HEADLINES:
4 May 2017

County
Elections
2017

3,145 FTE (ex fire & schools)

£34.5m savings target

Working in partnership

Being a County Councillor

County
Elections
2017

Local:

- Listen to local people
- Speak-up / “Champion” local issues
- Bring your expertise to the table
- Help join up the public sector for your electorate

Scrutiny:

- Suggest new ways of doing things
- Hold to account
- Performance, quality, value
- Challenge

Part of a team: all on the same side (really!):

- Speak up for Gloucestershire
- Constructive challenge and ‘oppose’
- Work with officers and each other
- Please be responsible for the whole county, not just your division
- Be proud to be a County Councillor

al:

- Strategic d
- Visible goo
- Partners w
- Major decis
- policy and

Council

- Top level policy and financial framework
- A debating chamber
- The place for ‘politics’
- Civic and ceremonial

Good Governance:

- Hearings Panel
- Constitution Board
- Appointments; Appeals; Pensions

What's coming up?

Annual Council Meeting - Wednesday 17 May at 10am

Core Information for Members

Friday 12 May at 10am - overview of the Council, role of the elected member, first Council meeting, Constitution and Code of Conduct, personal safety

Thursday 18 May at 10am – case work and complaints, your post bag, data and information and Standards

Effective communication and handling the media

Thursday 19 May at 10am



Your Role as a Corporate Parent:
Thursday 1 June at 3pm

Where to go for help?

Democratic Services Team – they're here for you!

Members Matter – online resource for members with weekly email (every Friday at 4pm)

Calendar of meetings

Press releases

Briefings on key issues

Member induction – copies of presentations