

## 5. Service Delivery

### 5.1 Current Contracts (correct at April 2025)

Gloucestershire has several different contracts for highways operation, maintenance and improvements:

- Gloucestershire Highways Term Maintenance Contract (TMC)
- Gloucestershire Highways Professional Services Contract (PSC)
- Street Lighting - Term Maintenance Contract
- Surfacing Works for Gloucestershire County Council
- Specialist supplier Framework

**Ringway** has the Term Maintenance Contract which has secured an extension to 2028 with a further possible extension to 2030 with a total contract value of £430m.

**WSP** has the Professional Services Contract with a contract end date of 2029 (with the option of a further 2 year extension to 2031) and a total contract value of £60m

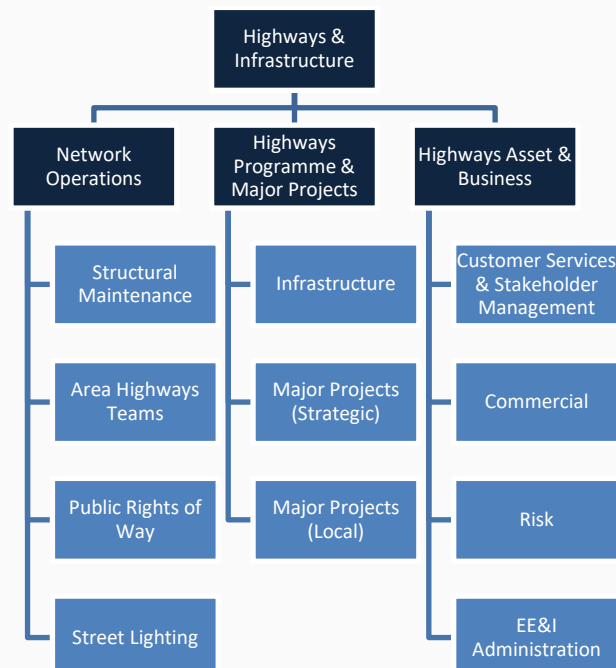
**MGroup Highways** has the Street Lighting contract with a contract end date of 2030 and a total contract value of £41m.

**Tarmac** has the Surfacing Works contract with a contract end date of 2026 and a total contract value of £80m.

**A Specialist supplier framework** is being established in 2025 to complement existing contracts where specialist support is required.

### 5.2 Highways & Infrastructure Team

The Highways & Infrastructure Team reports into the Director of Highways & Transport and is headed by an Assistant Director. The team is split into 3 distinct service areas, with each area being involved in the management of one, or more, of the contracts as detailed above:



### 5.3 Oversight Arrangements

There are various oversight/management arrangements in place including both Elected Members of the Council and Council officers:

- GCC Highways Senior Leadership Team (SLT) comprises the Assistant Director of Highways & Infrastructure together with the Network Operations Manager, the Structural Maintenance Manager, the Highways Programme & Major Projects Manager and the Highways Asset & Business Manager.
- Senior Leadership Team comprises the GCC SLT and the Contract Managers from the TMC and PSC contractors
- Highways Collaboration Board
- Lead Cabinet Members
- Scrutiny Committee
- Finance Performance and Risk
- Governance Board
- Highways Management Team
- Operational Leadership Team
- Health & Safety

### Collaboration

#### Key features of our approach:

- GCC staff, our Contractors and key supply chain partners are co-located at GCC depots or Shire Hall, working towards aligned outcomes.
- Access to some shared systems to enable transparency of data.