

Update to Proposals Map Statement

Introduction

CD1.8 Proposals Map Update Statement was published in September 2011 to accompany the Submission Waste Core Strategy for Gloucestershire.

Subsequent to this, the Strategy has been subject of an Independent Examination which commenced on Tuesday 31st January 2012 until Thursday 9th February 2012 and again reconvened on Monday 12th March 2012.

The adjournment to Session 7, Issue 7, took place as scheduled on 12th March 2012. During this session a discussion took place as to the potential main modifications that would be needed to make the WCS sound. The Council have now made a request to the Inspector under section 20 (7c) as amended (by section 112 of the Localism Act 2012) of the Planning and Compulsory Purchase Act 2004. These main modifications will be consulted upon between Friday 27th April and Monday 11th June 2012.

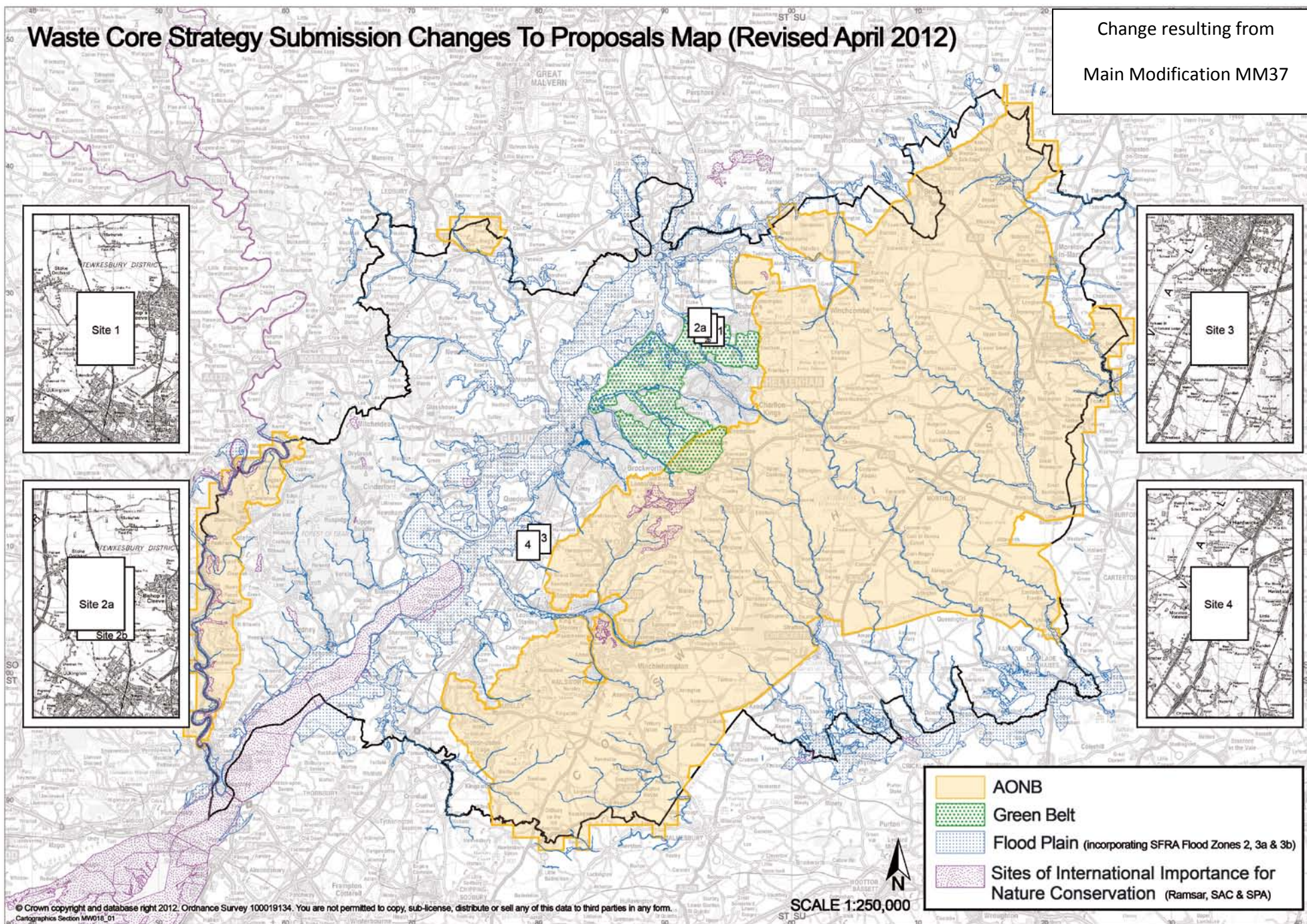
There are three Main Modifications which directly affect the Submission Changes to Proposals Map, these are:

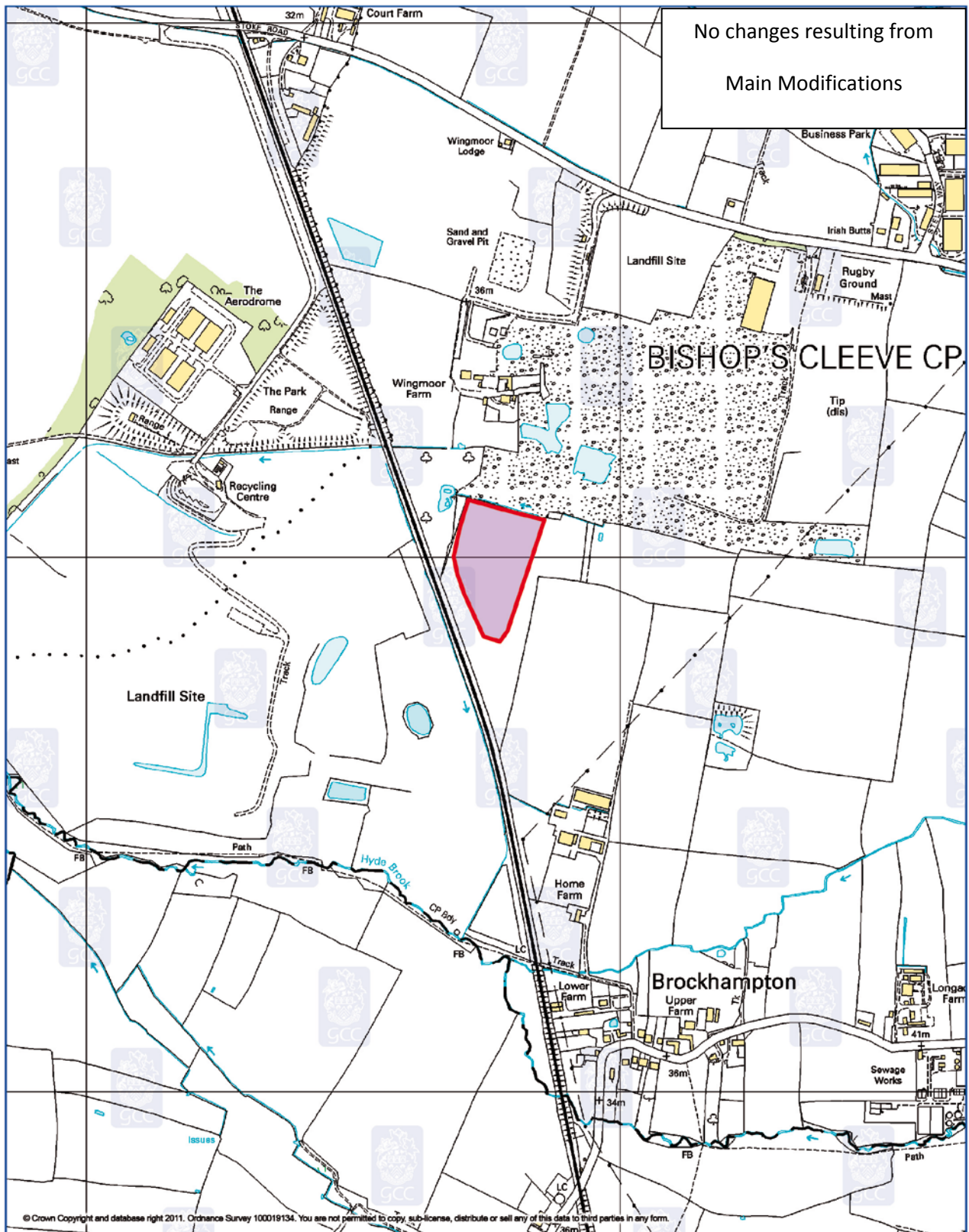
- MM37 Site 2 (Wingmoor Farm West and The Park) has been split into two separate sites (2a and 2b). The boundary of Site 2b has also been slightly modified.
- MM38 Site 3 (Javelin Park) – The boundary has been modified.
- MM39 Site 4 (Moreton Valence) – The boundary has been modified.

As a consequence the new proposals map and amended schedules have been included within this document. Please note although there are no proposed changes which affect Site 1 (Wingmoor Farm East), the schedule has been included here for completeness.

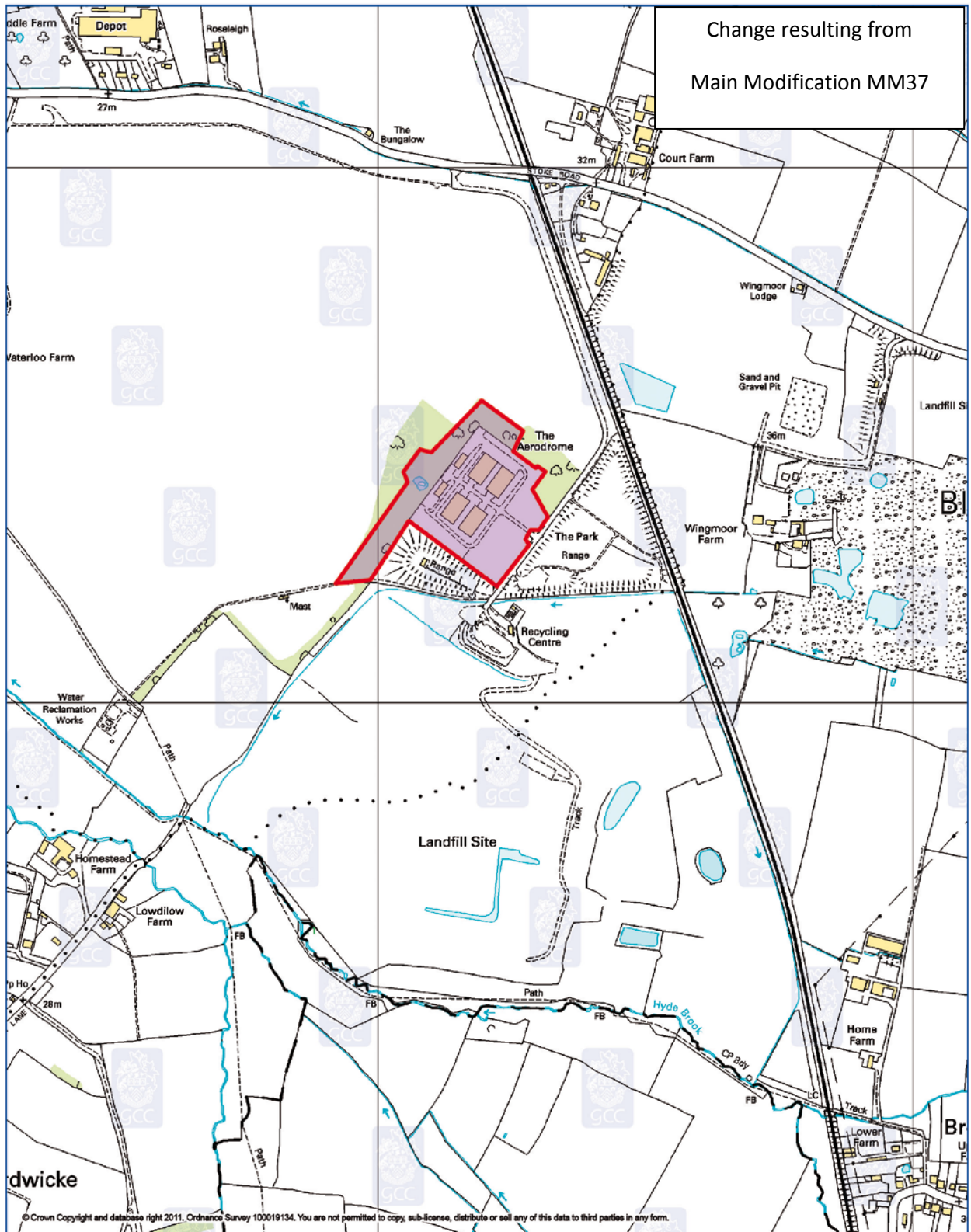
Waste Core Strategy Submission Changes To Proposals Map (Revised April 2012)

Change resulting from
Main Modification MM37

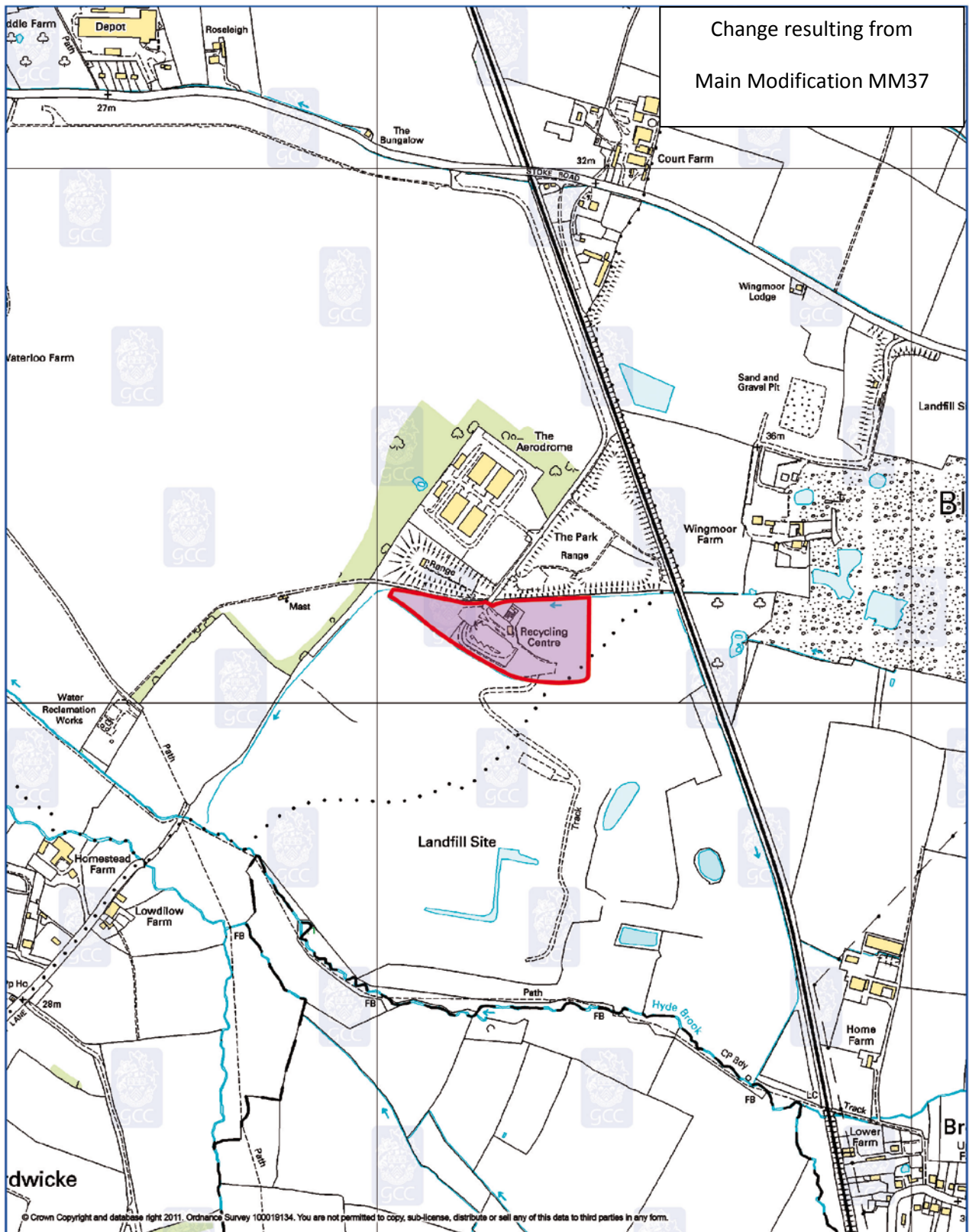




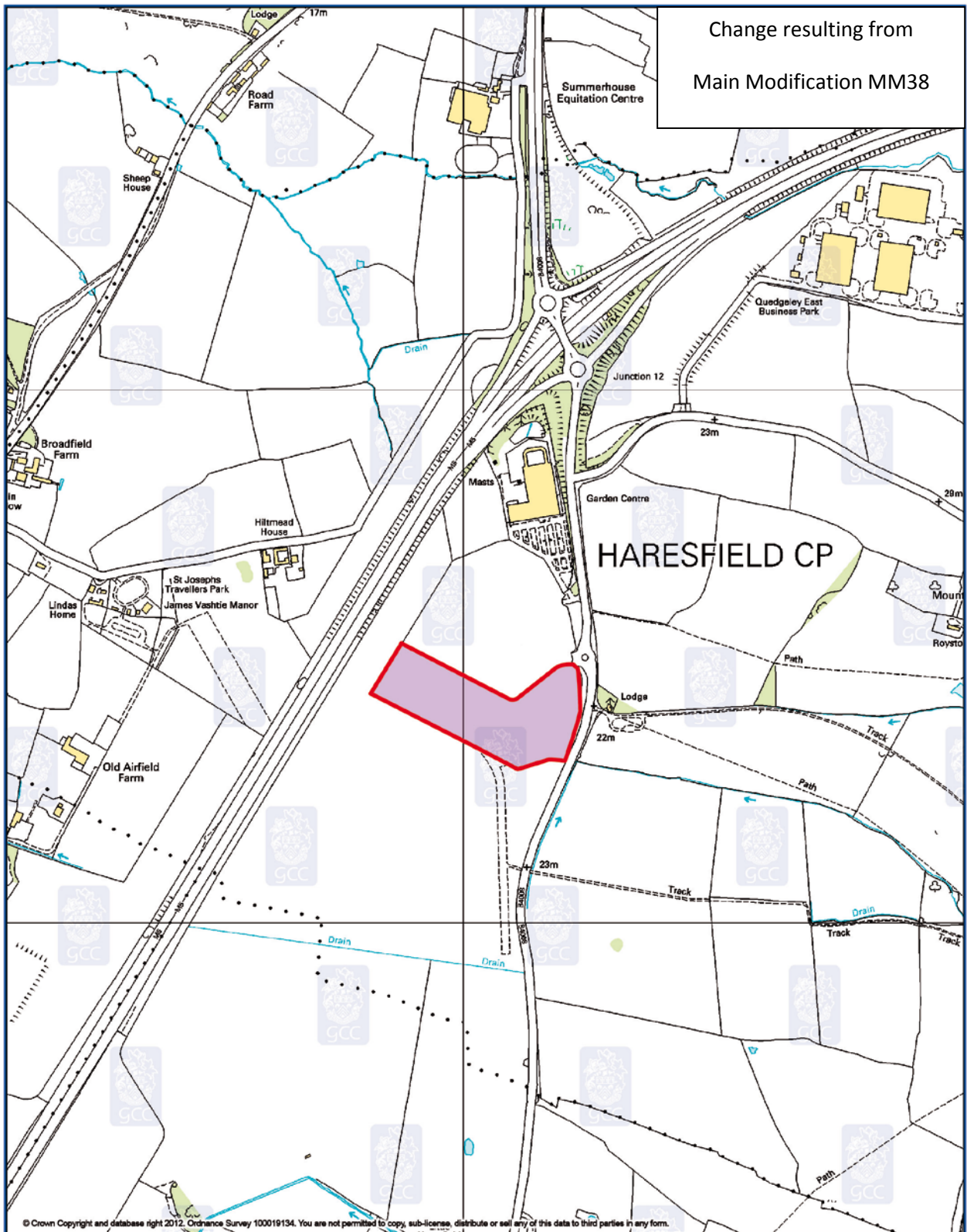
 Site Boundary	Site 1 - Wingmoor East	
A full range of Environmental Constraints is available on the Online Interactive Proposals Map	Waste Core Strategy Policy WCS4	
 500 yards 500 metres	 Gloucestershire COUNTY COUNCIL	 MW014_03



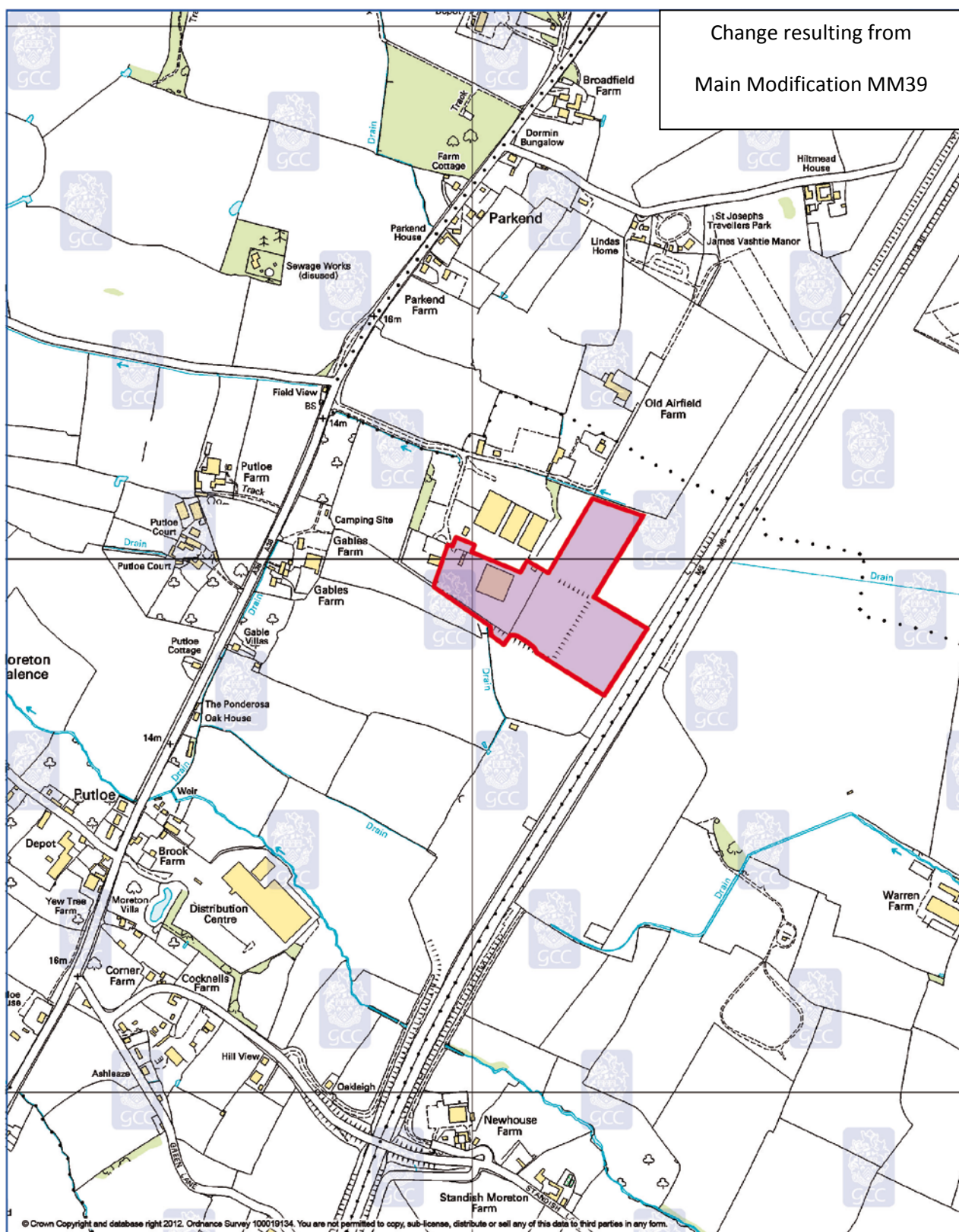
 Site Boundary	Site 2a - The Park
A full range of Environmental Constraints is available on the Online Interactive Proposals Map	Waste Core Strategy Policy WCS4
 500 yards 500 metres	 Gloucestershire COUNTY COUNCIL <div style="text-align: right;">  MW021_02 </div>



 Site Boundary	Site 2b - Wingmoor Farm West	
A full range of Environmental Constraints is available on the Online Interactive Proposals Map	Waste Core Strategy Policy WCS4	
		 MW021_01



 Site Boundary	Site 3 - Javelin Park
A full range of Environmental Constraints is available on the Online Interactive Proposals Map	Waste Core Strategy Policy WCS4
	  MW016_01



 Site Boundary	Site 4 - Moreton Valence	
A full range of Environmental Constraints is available on the Online Interactive Proposals Map	Waste Core Strategy Policy WCS4	
		 MW022_01