



# Gloucestershire

COUNTY COUNCIL



## **Severn Estuary Rapid Coastal Zone Assessment Survey PHASE 2 FIELDWORK REPORT Volume 2: Plates**



**for English Heritage (NHPCP project 3885)**

Adrian Chadwick and Toby Catchpole

Version 3.2 FINAL, February 2013



## Document Control Grid

Title: Severn Estuary Rapid Coastal Zone Assessment Survey.  
Phase 2 fieldwork report.  
Volume 2: plates.

Project number: HEEP project 3885 2 Main

Main authors: Adrian M. Chadwick and Toby Catchpole  
Archaeology Service  
Environment Directorate  
Gloucestershire County Council  
Shire Hall  
GLOUCESTER  
GL1 2TH

Origination date: June 2011

Version: 3.2

Reviser: Toby Catchpole

Date of last revision: February 2013

Status: FINAL

Copyright © Gloucestershire County Council and English Heritage  
2013

*English Heritage info.*

Circulation:

Required Action:

Approval:





## Contents of Volume 2

Cover image	Examining net hang supports in Minehead Bay, Somerset.
Plate 1	Nick Witchell and Briege Williams of GCCAS using the Magellan Mobile Mapper CX digital handheld GPS-equipped datalogger and the TruPulse 360B laser rangefinder.
Plate 2	Briege Williams using an Olympus VN-5500 digital voice recorder and headset microphone.
Plate 3	Briege Williams using a spade to sample one of the wooden stakes from a V-shaped wooden fish trap at Beachley, Glos.
Plate 4	The first deployment of the Argocat off Brean/Berrow Beach, Somerset.
Plate 5	The Argocat at Stert Flats, Som, with the wooden posts of probable putt rank (Line Nos. 10274/40024) in the foreground.
Plate 6	Nick Witchell, Briege Williams and Richard Brunning next to a net hang at Dunster Beach, Som. (Line Nos. 10122 & 10123).
Plate 7	A more substantial net hang line at Dunster Beach, Som. (Line No. 20064).
Plate 8	A contemporary net hang line still in use at Dunster Beach. (Line No. 20038).
Plate 9	A relatively recent net hang line (Line No. 10105) at Hills Flats, South Glos.
Plate 10	A relatively recent net hang line of coniferous posts re-using the line of an earlier probable putt rank at Oldbury Flats, South Glos. (Line No. 10029).
Plate 11	One leader arm of the large fishing structure at Hayward Rock, Hills Flats, South Glos. (Line No. 10322).
Plate 12	Possible angled net hang supports south-west of the harbour at Lydney, Glos.
Plate 13	Stone rings or 'doughnuts' acting as net hang post supports for relatively recent metal poles at Blue Anchor Bay, Som.
Plate 14	Groups of angled stones, some of which have fallen inwards after the removal of net hang posts, at Dunster Beach, Som. (Line No. 10138).
Plate 15	Nick Witchell and Briege Williams recording a net hang with eroded remains of wooden posts surviving within the stone rings, Minehead Bay, Som. (Line No. 10227).
Plate 16	Stone clearance associated with a relatively recent net hang line at Dunster Beach, Som.
Plate 17	Possible hang net clearance or ground line gully, Dunster Beach, Som. (Line No. 10137).
Plate 18	Nick Witchell recording a probable ground line gully in driving rain at Warren Point, Minehead Bay, Som. (Line No. 20093).

- Plate 19 A large stone fish weir formed from particularly large boulders at Gore Point near Porlock Weir, Som. (Line No. 10235).
- Plate 20 Detail of large boulders used in the construction of a stone fish weir at Gore Point near Porlock Weir, Som. (Line No. 10235).
- Plate 21 Another large stone fish weir, at Minehead Bay, Som. (Line No. 10221).
- Plate 22 The apex and outflow channel or gut of a large stone fish weir at Blue Anchor Bay, Som. (Line No. 10145), part of two conjoined examples.
- Plate 23 Nick Witchell recording the stone leader of part of one of the largest stone weirs in Minehead Bay, Som. (Line No. 10383).
- Plate 24 A much smaller stone fish weir at Dunster Beach, Som, forming a low bank across a natural outflow channel in the intertidal surface (Line No. 10183).
- Plate 25 Another small stone fish weir at Minehead, Som, north-west of the Old Harbour (Line No. 10385).
- Plate 26 Brieger Williams recording the gut or outflow channel of a typical stone weir at Dunster Beach, Som. (Line No. 10139/40030).
- Plate 27 Side view of a relatively well-defined gut or outflow channel on a stone fish weir, Dunster Beach, Som. (Line No. 10210).
- Plate 28 The gut or outflow channel of a stone fish weir at Warren Point, east of Minehead Bay, Som. (Line No. 10204).
- Plate 29 An especially well-defined gut or outflow channel on a stone fish weir at Gore Point, Porlock Weir, Som. (Line No. 10236/10397).
- Plate 30 A well-defined gut or outflow channel on a stone fish weir at Minehead Bay, Som. (Line No. 10383).
- Plate 31 Another well-defined apex and gut on a stone fish weir at Minehead Bay, Som. (Line No. 10381).
- Plate 32 A stone fish weir with everted 'horns' extending seawards from its gut or outflow channel, Minehead Bay, Som. (Line Nos. 20094 & 20095).
- Plate 33 A stone fish weir at Gore Point, Porlock Weir, Som. (Line No. 10236/10397) where some faced walling survives.
- Plate 34 The leader arm of a well-built stone fish weir constructed of cobbles in a 'drystone wall' pattern, Minehead Bay, Som. (Line No. 10190).
- Plate 35 One of the leader arms of two large, V-shaped stone weirs at Blue Anchor Bay, Som. (Line No. 10145), which is still used and maintained.
- Plate 36 L-shaped structure appended to the outer face of a stone fish weir, Minehead Bay, Som. (Line No. 10190).
- Plate 37 Semi-circular structure appended to the outer face of a stone fish weir, Warren Point, near Minehead Bay, Som. (Line No. 10196).

- Plate 38 Unusual stone fish weir with two guts or outflow channels featuring narrow, convex walls, Dunster Beach, Som. (Line Nos. 20032-20034).
- Plate 39 Large stone fish weir with metal scaffolding 'hoop' at its main apex gut or outflow channel, Minehead Bay, Som. (Line Nos. 20096-20098/10380).
- Plate 40 Briege Williams recording a large but more crudely built stone fish weir at Lilstock, Som, one of two conjoined structures (Line No. 20103).
- Plate 41 One of two roughly built, rubble fish weirs recorded using the laser at English Stones, South Glos. (Line Nos. 10332 & 10333).
- Plate 42 Group of wooden stakes sampled from underneath the eroding leader arm of a stone fish weir in Blue Anchor Bay, Som. (Line No. 20039).
- Plate 43 Richard Brunning examining the well-built gut or outflow channel from a stone fish weir still in use at Blue Anchor Bay, Som. (Line No. 10145).
- Plate 44 Relatively well-preserved leader arm of a stone fish weir surviving at Dunster Beach, Som. (Line No. 20061).
- Plate 45 Well-preserved leader arm and gut of a stone fish weir at Warren Point near Minehead, Som. (Line No. 10124).
- Plate 46 Nick Witchell recording the apex of a well-preserved fish weir in Minehead Bay, Som. (Line No. 10221/10384), apparently lacking an outflow channel.
- Plate 47 The relatively well-preserved 'inner' face of the leader arm for a stone fish weir at Dunster Beach, Som. (Line No. 20030).
- Plate 48 The leader arm of a stone fish weir that has become increasingly buried by drifting sand deposits, Dunster Beach, Som. (Line No. 20074).
- Plate 49 The leader arm of a stone fish weir increasingly dispersed and eroded by tidal forces, Dunster Beach, Som. (Line Nos. 10131 & 10132).
- Plate 50 A low-lying leader arm of a stone fish weir where only one course now survives, Warren Point, Som. (Line No. 10206).
- Plate 51 Briege Williams recording a stone weir where the inner and outer facing stones survive, Blue Anchor Bay, Som. (Line No. 20044 & 20046).
- Plate 52 The denuded arm of one stone weir (Line No. 10189) crossed obliquely by a later weir (Line No. 10187) at Warren Point near Minehead, Som.
- Plate 53 A stone weir at Minehead Bay, Som. (Line No. 10383), which kinks noticeably across the line of an earlier structure (Line No. 10382).
- Plate 54 Two of the small V-shaped rock-cut fish traps at Stolford, Som, looking to the north-west. Source: Richard McDonnell 1994, used with permission.
- Plate 55 Two of the rock-cut fish weirs at Stolford in April 2011 (Line Nos. 10412 & 10411).

- Plate 56 The stone filled leader arm of one of the small, rock-cut fish weirs at Stolford, Som.
- Plate 57 The narrow (0.20-0.30m) rock-cut slot of one of the Stolford fish weirs, partly filled with stone and just visible under the water surface.
- Plate 58 A much smaller rock-cut slot at the apex of one of the Stolford weirs photographed in 1994. Source: Richard McDonnell 1994, used with permission.
- Plate 59 Looking across a V-shaped stone feature without any apparent guts or outflow channels, Warren Point, near Minehead, Som. (Line No. 10200).
- Plate 60 The 'solid' apex of another V-shaped feature without any apparent guts or outflow channels, Dunster Beach, Som. (Line Nos. 10140 & 40029).
- Plate 61 A natural hollow in the beach with deliberate clearance creating low banks along its sides, Warren Point, near Minehead, Som. (Line No. 10211).
- Plate 62 Apparently deliberate clearance along the edge of a pool associated with an irregular, curving stone bank (Line No. 10202).
- Plate 63 The subrectangular or horseshoe-shaped feature in Minehead Bay; possibly a fish weir but without a clear gut or outflow channel (Line No. 10219).
- Plate 64 Briege Williams recording the stone 'wall' feature at St Audrie's Bay, Som. (Line No. 20059), with the cleared pool to the left of the image.
- Plate 65 Tidal pool at Lilstock, Som, with narrow line of stones extending across it (Line No. 20104).
- Plate 66 Nick Witchell recording linear stone structure (Line No. 10214) extending across a tidal outflow channel at Madbrain Sands, Warren Point, Minehead, Som.
- Plate 67 Stone wall Line No. 10241, appended to a stone fish weir (Line No. 20082).
- Plate 68 Gore Point, Porlock, Som, showing the stone leader arm of fish weir Line No. 10230/10232/10404.
- Plate 69 Looking south from stone bank Line No. 10234 at Gore Point, Porlock, Som.
- Plate 70 Looking north-east from stone bank Line No. 10234 at Gore Point, Porlock, Som.
- Plate 71 Nick Witchell and Adrian Chadwick recording the northern end of linear bank Line No. 10406 at Gore Point, Porlock, Som.
- Plate 72 Another view of bank Line No. 10406 at Gore Point, Porlock, and the two heaps contained within the area of clearance.
- Plate 73 Curvilinear stone banks Line Nos. 10390 (left) and 10391 (right) at Gore Point, Porlock, looking north-west.

- Plate 74 Two as yet unrecorded linear features at Gore Point, Porlock, Som, showing the rows of distinct circular 'cairns' built on top of the low banks.
- Plate 75 Linear low stone bank with at least four heaped 'cairns' visible on it, Gore Point, Porlock Weir, Som. (Line No. 10231).
- Plate 76 A detailed view of one of the stone heaps or 'cairns' (Point No. 67) at Gore Point, Porlock, Som.; itself part of a large linear feature.
- Plate 77 Nick Witchell next to a well-preserved stone heap (Point No. 137), north-east of the Old Harbour at Minehead Bay, Som.
- Plate 78 Larger but more denuded stone heap in Minehead Bay, Som. (Point No. 137).
- Plate 79 The surviving large conger eel trap at Minehead Bay, Som. (Line No. 10377).
- Plate 80 Detail of the low circular stone bank forming part of the surviving conger eel trap in Minehead Bay, Som. (Line No. 10377).
- Plate 81 Nick Witchell recording the leader arm of a V-shaped, stake-built fish trap at Beachley, Glos, looking south-east (Line No. 10006).
- Plate 82 Detail of the leader arm of a V-shaped, stake-built fish trap at Beachley, Glos. (Line No. 10007).
- Plate 83 Detail of the leader arm of a V-shaped, stake-built fish trap at Beachley, Glos. (Line No. 10004).
- Plate 84 Detail of the arm of a 'T-shaped' stake-built structure at Oldbury Flats, South Glos. (Line No. 10015).
- Plate 85 Detail of the leader arm and apex of a V-shaped, stake-built fish trap at Oldbury Flats, South Glos. (Line No. 10032).
- Plate 86 Woven withy tie associated with a circular catch basket and V-shaped fish trap at Oldbury Flats, South Glos. (Point No. 95, Line No. 10339).
- Plate 87 A V-shaped, stake-built fish trap at Beachley, Glos. (Line No. 10004).
- Plate 88 A V-shaped, stake-built fish trap at Beachley, Glos. (Line No. 10004).
- Plate 89 The apex of a V-shaped, stake-built fish trap at Oldbury Flats, Aust parish, South Glos. (Line No. 10032).
- Plate 90 The apex of a more eroded V-shaped, stake-built fish trap at Oldbury Flats, Aust parish, South Glos. (Line No. 10038).
- Plate 91 Another eroded, upstream-facing V-shaped fish trap at Oldbury Flats, Aust parish, South Glos. (Line Nos. 10041/10342; Point No. 102).
- Plate 92 A V-shaped, stake-built fish trap south-west of Walding's Pill, Glos, photographed in 1998.
- Plate 93 A V-shaped fish trap at Oldbury Flats (Line Nos. 10032).

- Plate 94 The apex of another V-shaped, stake-built fish trap at Oldbury Flats (Line No. 10030).
- Plate 95 A V-shaped, stake-built fish trap at Oldbury Flats, South Glos. (Line No. 10031).
- Plate 96 A V-shaped fish trap at Oldbury Flats in Aust parish, South Glos, with the remains of a circular catch basket at its apex (Line No. 10030, Point 98).
- Plate 97 The V-shaped, stake-built fish trap at Beachley with a circular catch basket (Line No. 10343).
- Plate 98 Detail of the circular wattle-built catch basket of the V-shaped, stake-built fish trap at Beachley (Line No. 10343).
- Plate 99 The circular catch basket of the fish trap at Beachley, Glos. (Line No. 10343), photographed in 2009. Source: Richard Morgan, used with permission.
- Plate 100 Detail of the 'neck' of the wattle-built catch basket at Beachley (Line No. 10343).
- Plate 101 Detail of a circular catch basket at Oldbury Flats, Glos. (Point No. 25).
- Plate 102 Another circular catch basket at Oldbury Flats, where the open apex faced downstream (Point No. 95, Line No. 10339).
- Plate 103 A V-shaped, stake-built fish trap at Oldbury Flats, South Glos. with a circular catch basket, photographed in 2000. Source: Simon Cooper, <http://www.salmonboats.co.uk>, used with permission.
- Plate 104 The same V-shaped structure Line No. 10021 at Oldbury Flats, South Glos, photographed in April 2011.
- Plate 105 Another view of V-shaped structure Line No. 10021 at Oldbury Flats, South Glos.
- Plate 106 The north-eastern end of Line No. 10021 at Oldbury Flats, Aust, South Glos.
- Plate 107 The possible T-shaped structure at Oldbury Flats, Aust parish, South Glos, (Line Nos. 10016 & 10015).
- Plate 108 The possible T-shaped structure at Oldbury Flats, South Glos. (Line No. 10015).
- Plate 109 Horizontal hurdling and vertical stakes at the very edge of the active river channel at Grange Pill, Woolaston, Glos. (Line No. 10328).
- Plate 110 Possible riverbank revetment or cribbing of unknown date at Beachley (Line No. 10343).
- Plate 111 Lines of stakes at Beachley, Glos. at oblique angles to the existing river channel (Line No. 10341).
- Plate 112 Small V-shaped setting at Oldbury Flats, Aust, South Glos. (Line No. 10336).

Plate 113	Wattle-built structure at Grange Pill, Woolaston, Glos. (Line No. 10326).
Plate 114	One eroding edge of a much more finely woven wattle-built structure at Grange Pill, Woolaston (Line No. 10326).
Plate 115	A more well-preserved, finely woven fish basket at Grange Pill, Woolaston (Line No. 10326).
Plate 116	A much smaller fish basket at Grange Pill, Woolaston (Line No. 10326).
Plate 117	A finely woven basket at Oldbury Flats, South Glos. (Point No. 21).
Plate 118	Another basket at Oldbury Flats (Point No. 22), with an inner, more finely woven structure.
Plate 119	Line of low, eroded stakes at Stert Flats, Som, not subsequently relocated or formally recorded.
Plate 120	Another line of low, eroded stakes from a fish trap leader arm at Stert Flats, Som. (Line No. 10271).
Plate 121	Briege Williams near the apex of a V-shaped, stake-built fish trap at Stert Flats, Som. (Line No. 10269).
Plate 122	Erosion from tidal scouring on a stake at Stert Flats, Som. (Line No. 10272).
Plate 123	Nick Witchell recording a fragmentary leader arm (Line No. 20108) from a stake built fish trap at Stert Flats, Som.
Plate 124	Nick Witchell recording the stakes at the apex of another, better preserved V-shaped fish trap at Stert Flats, Som. (Line No. 20111).
Plate 125	Large split oak stakes at the apex of one of the westernmost and best surviving V-shaped fish traps at Stert Flats, Som. (Line No. 10271).
Plate 126	A previously recorded V-shaped fish trap and stone marker cairn at Stert Flats, Som. (Point No. 30020), now almost covered by drifting sand.
Plate 127	The large V-shaped stake and stone fish trap at Stert Flats, Som. (Line Nos. 10293-10296).
Plate 128	The apex of the large stake and stone fish trap at Stert Flats, Som. (Line Nos. 10293-10296) looking north-east.
Plate 129	Detail of the large stake and stone fish trap at Stert Flats, Som. (Line Nos. 10293-10296).
Plate 130	Another detailed view of Line Nos. 10293-10296, Stert Flats, Som.
Plate 131	Fish trap Line Nos. 10293-10296, Stert Flats, Som.
Plate 132	The deliberate gap (Line No. 10295) in stake and stone fish trap Line Nos. 10293-10296.

- Plate 133 One of the dense lines or 'hedges' of multiple small stakes at Brean Beach/Berrow Flats, Som. (Line No. 10252).
- Plate 134 A more detailed view of a dense line or 'hedge' of multiple small stakes at Brean Beach/Berrow Flats, Som. (Line No. 10252).
- Plate 135 A less obvious 'hedge' at Brean Beach/Berrow Flats, Som. (Line No. 10257).
- Plate 136 Angled stakes associated with a linear stake-built feature at Brean Beach/Berrow Flats, Som. (Line No. 10257).
- Plate 137 Nick Witchell recording where a multiple stake alignment (Line No. 10251) had cut through earlier peat deposits at Brean Beach/Berrow Flats, Som.
- Plate 138 Berrow Flats, Som. (Line No. 40018), with horizontal roundwood elements just visible in the mud.
- Plate 139 Probable putt rank north-east of Littleton Pill, Oldbury Flats, South Glos. (Line No. 10052).
- Plate 140 More detailed view of putt rank Line No. 10052, Littleton Pill, Oldbury Flats.
- Plate 141 Another view of some of the well-preserved woven butts (Line No. 10054) at Littleton Pill, Oldbury Flats, South Glos.
- Plate 142 Withy tie used to secure a woven basket in the putt rank north-east of Littleton Pill, Oldbury Flats, Aust parish, South Glos. (Line No. 10054).
- Plate 143 Another probable putt rank at Oldbury Flats, Aust parish, South Glos, south-west of Littleton Pill (Line No. 10029).
- Plate 144 The line of a much more eroded probable putt rank at Oldbury Flats, Aust parish, South Glos. (Line No. 10020).
- Plate 145 The well-preserved rank at Slime Road, Sedbury, Glos. (Line No. 10072), looking north-east.
- Plate 146 Another view of the impressive fishing rank at Slime Road, Sedbury, Glos. (Line No. 10072).
- Plate 147 A 20<sup>th</sup> century putcher rank at Gatcombe, Glos (Line No. 10069).
- Plate 148 A 20<sup>th</sup> century putcher rank south-west of Brims Pill, Glos. (Line No. 10350).
- Plate 149 Another view of putcher rank Line No. 10350 south-west of Brims Pill, Glos.
- Plate 150 Two putcher ranks south of Awre, Glos. (Line Nos. 10064 & 10065).
- Plate 151 Remains of a modern putcher rank by the railway line north-east of Gatcombe, Glos. (Line No. 10352).
- Plate 152 Another view of putcher rank Line No. 10350 north-east of Gatcombe, Glos.
- Plate 153 Disused aluminium wire putcher baskets by putcher rank Line No. 10350, north-east of Gatcombe, Glos.



- Plate 154 Briege Williams examining disused wire putcher baskets by the large fishing structure (Line Nos. 10320-10322) at Hayward Rock, Hills Flats, Glos.
- Plate 155 Nick Witchell and Briege Williams by the apex (Line No. 10321) of the large structure at Hayward Rock, Hills Flats, Glos.
- Plate 156 One of the extensive leader arms of the fishing structure at Hayward Rock, Hills Flats, Glos. (Line No. 10322).
- Plate 157 An early phase of the fishing structure at Hayward Rock, Hills Flats, Glos, where rock-cut putcher posts (Line No. 10310) were re-used.
- Plate 158 Putcher rank Line No. 10097 at Hills Flats, South Glos, with earlier putcher rank Line No. 10098 in the foreground.
- Plate 159 Briege Williams recording the north-western end of putcher rank Line No. 10097 at Hills Flats, South Glos.
- Plate 160 Paired posts of Line No. 10099, forming the possible leader arm extension to Line No. 10097 at Hills Flats, South Glos.
- Plate 161 A relatively recent putcher rank south-east of Awre, Glos. (Line No. 10061).
- Plate 162 Remains of a putcher rank at Hills Flats on the boundary between Hill parish, South Glos. and Ham and Stone parish, Glos. (Line No. 10104).
- Plate 163 Briege Williams recording a putcher rank (Line No. 10095) at Hills Flats near Oldbury-upon-Severn, South Glos.
- Plate 164 The fragmentary remains of a probable putcher rank at Severn Beach, South Glos. (Line No. 10088), close to the wreck of a trow or barge.
- Plate 165 A relatively recent putcher rank in deep mud at Oldbury Flats, Aust, South Glos. (Line No. 10042).
- Plate 166 Briege Williams and Nick Witchell recording two relatively modern putcher ranks north-east of Horse Pill, Stroat, Tidenham parish, Glos. (Line Nos. 10329 & 10330).
- Plate 167 Adrian Chadwick recording the two lines of more eroded and weed covered putcher rank posts at Sedbury Cliffs, Tidenham, Glos. (Line Nos. 10075 & 10076).
- Plate 168 Another less obvious putcher rank south-west of Gatcombe, Awre parish, Glos. (Line No. 10362).
- Plate 169 Nick Witchell recording the sinuous line of a putcher rank at Aust, South Glos. (Line No. 20000).
- Plate 170 A curving putcher rank at Oldbury Flats, Aust parish, South Glos. (Line No. Line No. 10059).
- Plate 171 Two extensive putcher ranks at Oldbury Flats, Aust, South Glos, extending hundreds of metres into the river channel (Line Nos. 10055 & 10056).

- Plate 172 The last permanent putcher rank structure still in use on the River Severn, south-west of Awre, Glos. (Line No. 10062).
- Plate 173 Modern wire putcher baskets used in the last permanent working putcher rank on the River Severn south-west of Awre, Glos (Line No. 10062).
- Plate 174 Wooden remains of an earlier phase of Line No. 10062, south-west of Awre, Glos (Line No. 10063).
- Plate 175 Putcher rank Line No. 10351 and nearby stone steps, south of Poulton Court, Awre parish, Glos.
- Plate 176 Putcher rank Line No. 10349 south-west of Brims Pill, Awre parish, Glos.; and the nearby flight of stone steps
- Plate 177 Roughly paired posts of a relatively recent, possible putcher rank west of Dowlais Farm, Kingston/Woodspring Bay, North Som.
- Plate 178 Posts of a probable putt rank at Stert Flats, Som. (Line Nos. 10285 & 10286), looking north-east.
- Plate 179 Nick Witchell recording Line Nos. 10285 & 10286 at Stert Flats, Som, looking south-west.
- Plate 180 Stert Flats, Som, looking south-west along possible putcher rank Line No. 10273 towards more substantial possible putt rank Line No. 10274.
- Plate 181 The small single, spaced stakes of possible putcher rank Line Nos. 10273 & 10274, Stert Flats, Som.
- Plate 182 Possible putcher rank Line No. 20116 at Stert Flats, Som.
- Plate 183 Looking north-east along putt or putcher rank Line Nos. 10300 & 10301, Stert Flats, Som.
- Plate 184 Another view looking north-west of putt or putcher rank Line Nos. 10300 & 10301, Stert Flats, Som.
- Plate 185 A possible putcher rank (Line No. 10111) at Hayward Rock, Hills Flats near Severn House Farm, Ham and Stone parish, Glos.
- Plate 186 Another possible putcher rank at Hayward Rock, Glos, probably a continuation of Line No. 10317.
- Plate 187 Another rock-cut posthole at Hayward Rock, Hills Flats, Glos, from a possible net hang or putcher (Line No. 10316).
- Plate 188 A rock-cut posthole at Hayward Rock, Hills Flats, Glos, partly exposed where the marl rock has sheared off (Line No. 10158).
- Plate 189 Three lines of rock-cut postholes from one or more phases of a putt or putcher rank at Hayward Rock, Hills Flats, Glos. (Line No. 10159).
- Plate 190 Two pairs of rock-cut postholes with surviving post stumps north-east of Gatcombe, Glos, probably part of a putcher rank (Line No. 10353).

Plate 191	Pairs of wooden posts with smaller wedges in rock-cut postholes between Purton (Forest of Dean) and Gatcombe, Glos. (Line No. 10364).
Plate 192	Two rock cut postholes south-west of Sharpness Docks, Glos, part of a putcher rank (Line No. 10358).
Plate 193	Toby Catchpole recording rock-cut postholes and surviving wooden posts of a putcher rank south-west of Sharpness Docks, Glos. (Line No. 10360).
Plate 194	Several pairs of modern, machine-cut wooden posts at Kilkenny Bay, Portishead, Nth Som. (Line No. 10354).
Plate 195	Northwick Oaze, South Glos, looking south-west towards the corner of the L-shaped structure (Line No. 20017).
Plate 196	Detail of the 'corner' of Line No. 20017 at Northwick Oaze, South Glos.
Plate 197	Double row of small stakes from a possible putcher rank within the L-shaped structure Line No. 20017 at Northwick Oaze, South Glos.
Plate 198	Part of the possible hurdle trackway at Oldbury Flats, just north-east of Littleton Warth in Aust parish, South Glos. (Line No. 10057).
Plate 199	Detail of the 'sails' and the wattling construction of the hurdle panels forming a trackway in Line No. 10057, Oldbury Flats, Aust, South Glos.
Plate 200	Another view of possible hurdle trackway Line No. 10057 at Oldbury Flats, Aust, South Glos.
Plate 201	Nick Witchell recording the fishing station (Point No. 3) south of Black Rock Clyce at Pawlett Hams, North Somerset.
Plate 202	Another view of fishing station Point No. 3 near Black Rock Clyce, Pawlett Hams, North Somerset.
Plate 203	Nick Witchell recording a probable brick-built fish house at Minsterworth Ham, Glos. (Point No. 5).
Plate 204	A possible fish house on the south side of Minsterworth, Glos. (Point No. 13), recorded from the opposite riverbank at Elmore Back.
Plate 205	Brick and concrete fish house south-west of Awre, Glos. (Point No. 30), close to the last working putcher rank on the River Severn (Line No. 10062).
Plate 206	The stone building at Middle Hope, St Thomas' Head, North Som.
Plate 207	The possible beaching area at Warren Point, Minehead Bay, Som.
Plate 208	Upright stone set into the intertidal zone north-west of Watchet Harbour, Som.
Plate 209	The large subrectangular beaching area cleared of boulders and cobbles at Gore Point, Porlock, Som.
Plate 210	Large upright wooden post 3-4m high near Minehead Harbour, Som.

Plate 211	Three substantial metal posts at Slime Road, Sedbury, Glos.
Plate 212	Low, eroded wooden post surrounded by stones used to support and stabilise it, Doniford Bay, Som. (Point No. 50012).
Plate 213	A single isolated wooden post at Slime Road, Sedbury.
Plate 214	Purpose-made iron mooring post at Castle Meads, Alney Island near Gloucester.
Plate 215	Part of the stone wharf/quay at Gatcombe, Glos.
Plate 216	The turnstile of the old ferry terminal at Old Passage, Aust, South Glos.
Plate 217	The vehicle ramp of the old ferry crossing at Old Passage, Aust, South Glos.
Plate 218	Two older wooden phases of ferry piers at Old Passage, Aust, South Glos.
Plate 219	Wooden footings of a probable jetty at Cobbs Leaze Clyce, Pawlett Hams, Som.
Plate 220	Part of a small jetty, landing stage or trackway south-west of Horse Pill, Stroat, Glos. (Point No. 128).
Plate 221	Briege Williams and Adrian Chadwick recording a timber and stone wharf, Robin's Quay, New Passage, South Glos. (Line No. 20021).
Plate 222	Adrian Chadwick recording the second stone and timber wharf structure at Redwick, New Passage, South Glos. (Line No. 20022).
Plate 223	A stone wall probably once associated with a wharf at Strand, Glos.
Plate 224	Stake alignments Line Nos. 10264 & 10265 forming part of a brushwood trackway, Burnham-on-Sea, Som.
Plate 225	The wooden trackway near Burnham-on-Sea, Som, with Nick Witchell recording and Richard McDonnell and Richard Brunning sampling.
Plate 226	The edge of trackway Line Nos. 10264 & 10265, near Burnham-on-Sea, Som.
Plate 227	Trackway Line Nos. 10264 & 10265, Burnham-on-Sea, Som, in 1994. Photo: Richard McDonnell 1994, used with permission.
Plate 228	Possible keelson north of the harbour at Lydney, Glos. (Point Nos. 5000-5002).
Plate 229	The hulk of a wooden and iron vessel south-west of Lydney harbour, Glos. (Line No. 40053).
Plate 230	The sternpost, lower hull and part of the rudder of another hulked vessel at Lydney, Glos. (Line No. 40006).
Plate 231	The remains of some of the concrete barges at Purton, Glos.
Plate 232	The remains of two of the predominantly wooden vessels at Purton, Glos.

Plate 233	The lower hull and keelson of the previously unrecorded vessel north-east of Awre, Glos. (Point No. 132).
Plate 234	The remains of the upper part of the same vessel north-east of Awre, Glos. (Point No. 132).
Plate 235	Fragment of a wooden vessel south of Awre and Whitescourt in Glos. (Point Nos. 28-29).
Plate 236	Toby Catchpole recording a wooden rudder and tiller north-east of Gatcombe, Glos. (Point No. 107).
Plate 237	The lower hull of a wooden vessel at Portishead Dock.
Plate 238	The lower wooden hull of a vessel near Chittening Warth, Severn Beach, South Glos. (Line No. 10087).
Plate 239	A stop-net boat at Gatcombe, Glos, badly burnt by vandals.
Plate 240	Another stop-net boat at Gatcombe, Glos.
Plate 241	Several different phases of riverbank revetment or cribbing at Stockland Reach, Pawlett Hams, North Som. (Line No. 10001).
Plate 242	Possible wooden revetment structure (Line No. 10345) eroding out of the channel edge near Beachley, Glos.
Plate 243	Stone and timber riverbank revetment on the western bank of the River Parrett north of Comwich, Som. (Line No. 40021).
Plate 244	Eroded coniferous wooden posts of relatively recent date north-east of Severn House Farm, Glos. (Line No. 10106).
Plate 245	Nick Witchell recording possible boat timbers re-used as a beach groyne at Madbrain Sands/Warren Point, Minehead Bay, Som. (Line No. 10199).
Plate 246	The stone and timber breakwater or groyne at St Audrie's Bay, Som.
Plate 247	The surviving grotto wall at St Audrie's Bay, Som.
Plate 248	Elm or lime posts forming a groyne at St Audrie's Bay, Som. (Line No. 10164).
Plate 249	One of the timber and stone structures at the base of the rhyne at Hock Ditch, near Fretherne, Glos. (Point Nos. 31-32).
Plate 250	The second stone and timber structure visible in the sides of the rhyne at Hock Ditch, Glos. (Point Nos. 33-34).
Plate 251	Earlier phases of flood defence bank near at Pawlett Hams, Som, seen from the existing defence bank.
Plate 252	The other 'Great Wall' of Elmore, south-east of Elmore Back, Glos. (Line No. 10014).

Plate 253	The brick-built pillbox on top of the sea wall near the old ferry ramp at Beachley, Glos. (Point No. 12).
Plate 254	The remains of the pillbox at Battery Point, Portishead, looking west across Woodhill Bay.
Plate 255	Well-preserved pillbox in the dunes at Sand Bay, North Som, looking east.
Plate 256	The well-preserved interior of the pillbox at Sand Bay, North Som.
Plate 257	The camouflaged stone and brick pillbox at the southern end of Weston Bay, Uphill, North Som.
Plate 258	One of two camouflaged pillboxes at Porlock Weir, Som.
Plate 259	Toby Catchpole recording a pillbox north of Passage Farm, Arlingham, Glos. (Point No. 123).
Plate 260	Another pillbox at Arlingham, Glos. (Point No. 119) almost completely subsided into soft riverbank sediments.
Plate 261	The pillbox near to the Old Passage Inn at Arlingham (Point No. 118) that has slipped off the riverbank completely.
Plate 262	The infantry section post at Blue Anchor Bay, Som. (Point No. 3009).
Plate 263	The concrete observation post on the eastern side of the harbour at Watchet, Som.
Plate 264	Brick-built observation post on top of the cliffs at Kilve, Som. (Point No. 54).
Plate 265	The Second World War concrete observation post at Lilstock, Somerset.
Plate 266	Part of a concrete and iron structure on Bossington Hill, Somerset; possibly the base for a military aerial or antenna.
Plate 267	Black and white sentry box now covered in graffiti, north of Sheepway and Atherton House, Portbury Wharf, North Som.
Plate 268	Probable anti-invasion concrete post at Berrow Flats, north-west of Burnham-on-Sea, Som.
Plate 269	The sinuous line of the probable peat-filled palaeochannel at Brean Beach, Berrow Flats, Som. (Line No. 20105).
Plate 270	A detailed view of a natural section across peat-filled palaeochannel Line No. 20105, Berrow Flats, Som.
Plate 271	Briege Williams standing next to the line of a possible peat-filled palaeochannel near Hill Pill, Hills Flats, South Glos. (Line No. 10102).
Plate 272	A piece of waterlogged prehistoric wood from the submerged forest and peat deposits at Blue Anchor Bay, Som.
Plate 273	Preserved prehistoric tree trunk at Grange Pill, near Woolaston, Glos.

- Plate 274 The preserved root bole of a prehistoric tree stump at Grange Pill, near Woolaston, Glos.
- Plate 275 Another tree root bole at Grange Pill, Woolaston, Glos.
- Plate 276 The extensive exposures of peat near the mouth of Hill Pill, Hills Flats, South Glos. (Line No. 10102).
- Plate 277 Peat exposures and preserved tree root boles south-west of Berkeley Power Station, Hills Flats, South Glos. (Line No. 10103).
- Plate 278 Peat exposures and preserved tree trunk remains at Hills Flats, Ham and Stone parish, Glos. (Line No. 10109).
- Plate 279 Possible animal hoof prints on a peat exposure at Hills Flats, Hill parish, South Glos. (Line No. 10102).
- Plate 280 A preserved tree root bole south-west of Littleton Pill, Aust parish, South Glos. (Line No. 10040).
- Plate 281 Previously unrecorded peat exposures south-west of Gullhouse Point, Kingston/Woodspring Bay, North Som. (Line No. 10082).
- Plate 282 Nick Witchell recording fragmented blocks of peat west of Brean Court, Brean Beach/Berrow Flats, Som. (Line No. 10250).
- Plate 283 The eroding edge of the peat exposure at the northernmost end of Brean Beach/Berrow Flats, Som. (Line No. 10262).
- Plate 284 Peat and submerged forest deposits at Stolford, Som. (Line No. 10304).
- Plate 285 Section through intertidal deposits at Stolford, Som. (Line No. 10306).
- Plate 286 Nick Witchell, Briege Williams and Richard Brunning recording and sampling peat and submerged forest deposits at Blue Anchor Bay, Som. (Line No. 10142, Point No. 46).
- Plate 287 Surviving tree root bole in peat and submerged forest deposits at Blue Anchor Bay, Som. (Line No. 10142).
- Plate 288 Compressed mass of branches in peat and submerged forest deposits at Blue Anchor Bay, Som. (Line No. 10142).
- Plate 289 Eroding peat and submerged forest deposits at Minehead Bay (Line No. 10217).
- Plate 290 Nick Witchell recording a tree root bole from the visible submerged forest deposits in Porlock Bay, Porlock Weir, Som. (Point No. 50008).
- Plate 291 Prominent ridge and furrow earthworks near Shepperdine Farm, Oldbury-upon-Severn, South Glos.
- Plate 292 The oar or paddle blade found at Beachley, Glos. just after recovery and prior to cleaning and scanning (Point No. 6).

- Plate 293      Photographs of the dorsal and ventral surfaces of the oar or paddle blade from Beachley, Glos.
- Plate 294      A three-dimensional, computer-generated image of the oar or paddle blade from Beachley, Glos, produced by Toby Jones of the Newport Ship Centre.
- Plate 295      Another three-dimensional, computer-generated image capture of the oar or paddle blade from Beachley, Glos.
- Plate 296      Large fragment of late 17<sup>th</sup> -18<sup>th</sup> century ceramic dish (Point No. 50022) adjacent to structure Line No. 40017 at Berrow Flats, Som.
- Plate 297      Andrew Walsh making a digital voice record of a large stone fish weir at Gore Point, Som. (Line No. 10403).
- Plate 298      Large earth-moving plant being used to machine out the channel leading to the harbour at Porlock Weir, Som. in 2009.
- Plate 299      Briege Williams, Nick Witchell and Richard Brunning heading back to the shore a survey visit to Blue Anchor Bay, Som.
- Plate 300      Adrian Chadwick, Nick Witchell and Briege Williams by flood defence earthworks at Pawlett Hams next to the River Parrett, North Som.





**Plate 1:** Nick Witchell and Briege Williams of GCCAS using the Magellan Mobile Mapper CX digital handheld GPS-equipped datalogger and the TruPulse 360B laser rangefinder to record a feature (a wooden wreck) at Severn Beach, South Gloucestershire.



**Plate 2:** Briege Williams using an Olympus VN-5500 digital voice recorder and headset microphone to record one of the leader arms of a V-shaped, stake-built fish trap at Oldbury Flats, Aust, South Gloucestershire.



**Plate 3:** Brieger Williams using a spade to sample one of the wooden stakes from a V-shaped wooden fish trap at Beachley, Glos.



**Plate 4:** The first deployment of the Argocat off Brean/Berrow Beach, Somerset, where the vehicle became bogged down only c. 20m from the edge of firmer sand. Nick Witchell was fortunately able to extricate it from the deep, liquid sucking mud.





**Plate 5:** The Argocat at Stern Flats, Som. The double row of wooden posts of a probable putting green (Line Nos. 10274/40024) can be seen in the foreground.



**Plate 6:** Nick Witchell, Briege Williams and Richard Brunning next to a net hang at Dunster Beach, Som, consisting of single, quite widely spaced boulders used as footrope weights (Line Nos. 10122 & 10123).



**Plate 7:** A more substantial net hang line at Dunster Beach, Som.; formed by a near continuous line of boulders and cobbles (**Line No. 20064**).



**Plate 8:** A contemporary net hang line still in use at Dunster Beach; illustrating its construction with wooden posts and beach boulders as footrope weights (**Line No. 20038**).





**Plate 9:** A relatively recent net hang line (**Line No. 10105**) at Hills Flats, South Glos.



**Plate 10:** A relatively recent net hang line of coniferous posts, re-using the line of an earlier probable putt rank at Oldbury Flats, South Glos. (**Line No. 10029**).



**Plate 11:** One leader arm of the large fishing structure at Hayward Rock, Hills Flats, South Glos. Originally supporting hurdle panels, in more recent years nylon netting was evidently used (**Line No. 10322**).



**Plate 12:** Possible angled net hang supports south-west of the harbour at Lydney, Glos.





**Plate 13:** Stone rings or 'doughnuts' acting as net hang post supports for relatively recent metal poles at Blue Anchor Bay, Som. (not formally recorded).



**Plate 14:** Groups of angled stones, some of which have fallen inwards after the removal of net hang posts, at Dunster Beach, Som. (**Line No. 10138**).



**Plate 15:** Nick Witchell and Briege Williams recording a net hang with eroded remains of wooden posts surviving within the stone rings, Minehead Bay, Som. (**Line No. 10227**).



**Plate 16:** Stone clearance associated with a relatively recent net hang line at Dunster Beach, Som. (not formally recorded).





**Plate 17:** Possible hang net clearance or ground line gully, Dunster Beach, Som. (**Line No. 10137**).



**Plate 18:** Nick Witchell recording a probable ground line gully in driving rain at Warren Point, Minehead Bay, Som. (**Line No. 20093**).





**Plate 19:** A large stone fish weir formed from particularly large boulders at Gore Point near Porlock Weir, Som. (Line No. 10235).



**Plate 20:** Detail of large boulders used in the construction of a stone fish weir at Gore Point near Porlock Weir, Som. (Line No. 10235).





**Plate 21:** Another large stone fish weir, at Minehead Bay, Som, with Nick Witchell just visible on the rubble leader arm in the far distance (**Line No. 10221**).



**Plate 22:** The apex and outflow channel or gut of a large stone fish weir at Blue Anchor Bay, Som. (**Line No. 10145**), part of two conjoined and contiguous examples. This well-preserved structure with metal poles may still be in occasional use.





**Plate 23:** Nick Witchell recording the stone leader of part of one of the largest stone weirs in Minehead Bay, Som. (Line No. 10383).



**Plate 24:** A much smaller stone fish weir at Dunster Beach, Som, forming a low bank across a natural outflow channel in the intertidal surface (Line No. 10183).



**Plate 25:** Another small stone fish weir at Minehead, Som, north-west of the Old Harbour (Line No. 10385).



**Plate 26:** Briege Williams recording the gut or outflow channel of a typical stone weir at Dunster Beach, Som. This image also shows a flattened area behind the weir arms that has been partly cleared of beach cobbles (Line No. 10139/40030).





**Plate 27:** Side view of a relatively well-defined gut or outflow channel on a stone fish weir, Dunster Beach, Som. (Line No. 10210).



**Plate 28:** The gut or outflow channel of a stone fish weir at Warren Point, east of Minehead Bay, Som. (Line No. 10204). Note the metal scaffolding poles.



**Plate 29:** An especially well-defined gut or outflow channel on a stone fish weir at Gore Point, Porlock Weir, Som. (Line No. 10236/10397), featuring everted 'horns' extending outwards.



**Plate 30:** A well-defined gut or outflow channel on a stone fish weir at Minehead Bay, Som. (Line No. 10383). More metal scaffolding poles are present, and nylon netting.





**Plate 31:** Another well-defined apex and gut on a stone fish weir at Minehead Bay, Som. (Line No. 10381), where metal scaffolding poles have been used as revetment for the stone walling as well as to support catch baskets or nets.



**Plate 32:** A stone fish weir with everted 'horns' extending seawards from its gut or outflow channel, photographed in particularly wet conditions at Minehead Bay, Som. (Line Nos. 20094 & 20095).





**Plate 33:** A stone fish weir at Gore Point, Porlock Weir, Som. (Line No. 10236/10397) where some faced walling survives, but is elsewhere partly obscured by rubble and seaweed.



**Plate 34:** The leader arm of a well-built stone fish weir constructed of cobbles in a 'drystone wall' pattern, Minehead Bay, Som. (Line No. 10190).



**Plate 35:** One of the leader arms of two large, V-shaped stone weirs forming a contiguous structure at Blue Anchor Bay, Som. (**Line No. 10145**), which is still used and maintained.



**Plate 36:** L-shaped structure appended to the outer face of a stone fish weir, Minehead Bay, Som. (**Line No. 10190**).





**Plate 37:** Semi-circular structure appended to the outer face of a stone fish weir, Warren Point, near Minehead Bay, Som. (Line No. 10196).



**Plate 38:** Unusual stone fish weir with two guts or outflow channels featuring narrow, convex walls extending seawards, Dunster Beach, Som. (Line Nos. 20032-20034).



**Plate 39:** Large stone fish weir with metal scaffolding 'hoop' at its inverted main apex gut or outflow channel, Minehead Bay, Som. (Line Nos. 20096-20098/10380). Note the additional metal poles seawards of the inverted gut.



**Plate 40:** Briege Williams recording a large but more crudely built stone fish weir at Lilstock, Som, one of two conjoined structures (Line No. 20103).





**Plate 41:** One of two roughly built, rubble fish weirs recorded using the laser at English Stones, South Glos. (**Line Nos. 10332 & 10333**). The metal poles are from a net hang line that was either part of the original structure or a later addition.



**Plate 42:** Group of wooden stakes identified and sampled from underneath the eroding leader arm of a stone fish weir in Blue Anchor Bay, Som. (**Line No. 20039**).





**Plate 43:** Richard Brunning examining the well-built gut or outflow channel from a stone fish weir still in use at Blue Anchor Bay, Som. (**Line No. 10145**). Note too the appended L-shaped structure.



**Plate 44:** Relatively well-preserved leader arm of a stone fish weir surviving at Dunster Beach, Som. (**Line No. 20061**).





**Plate 45:** Well-preserved leader arm and gut of a stone fish weir at Warren Point near Minehead, Som. (**Line No. 10124**). Note the clearance on either side; and the slightly concave profile of the area enclosed by the leader arms.



**Plate 46:** Nick Witchell recording the large apex of a well-preserved fish weir in Minehead Bay, Som. (**Line No. 10221/10384**), apparently an example that lacked an outflow channel. Note too the later net hang line appended to the weir, visible on the right side of the image.





**Plate 47:** The relatively well-preserved 'inner' face of the leader arm for a stone fish weir at Dunster Beach, Som. (Line No. 20030).



**Plate 48:** The leader arm of a stone fish weir that has become increasingly buried by drifting sand deposits, Dunster Beach, Som. (Line No. 20074).





**Plate 49:** The leader arm of a stone fish weir that has become increasingly dispersed and eroded by tidal forces, Dunster Beach, Som. (Line Nos. 10131 & 10132).



**Plate 50:** A low-lying leader arm of a stone fish weir where only one course now survives, Warren Point, Som. (Line No. 10206).



**Plate 51:** Briege Williams recording a stone weir where only lines of the inner and outer facing stones of the leader arms survive, Blue Anchor Bay, Som. (**Line No. 20044 & 20046**).



**Plate 52:** The denuded arm of one stone weir (foreground) (**Line No. 10189**) crossed obliquely by a later weir (background) (**Line No. 10187**) at Warren Point near Minehead, Som. The latter was also partly overlain by the arm of another later weir (**Line No. 10188**).





**Plate 53:** A stone weir at Minehead Bay, Som. (**Line No. 10383**), the leader arm of which kinks noticeably where it was built across the line of an earlier structure (**Line No. 10382**), still partly visible in the background.



**Plate 54:** Two of the small V-shaped rock-cut fish traps at Stolford, Som, looking to the north-west. Photo source: Richard McDonnell 1994, used with permission.



**Plate 55:** Two of the rock-cut fish weirs at Stolford in April 2011, with the apex of one (**Line No. 10412**) in the upper centre of the image and one arm towards the right; and the apex of another weir (**Line No. 10411**) in the upper left of the image. Note the increased seaweed.



**Plate 56:** The stone filled leader arm of one of the small, rock-cut fish weirs at Stolford, Som.





**Plate 57:** The narrow (0.20-0.30m) rock-cut slot of one of the Stolford fish weirs to the right of the ranging pole, partly filled with stone and just visible under the water's surface.



**Plate 58:** A much smaller rock-cut slot at the apex of one of the Stolford weirs photographed in 1994, with one leader arm slot extending to the upper left; and two outflow gaps visible. Photo source: Richard McDonnell 1994, used with permission.



**Plate 59:** Looking across a V-shaped stone feature without any apparent guts or outflow channels, Warren Point, near Minehead, Som. (**Line No. 10200**). The cleared area behind the arms may have been used as an intertidal pond. The apex is at the mid-right.



**Plate 60:** The 'solid' apex of another V-shaped stone-built intertidal pond without any apparent guts or outflow channels, Dunster Beach, Som. (**Line Nos. 10140 & 40029**).





**Plate 61:** A natural hollow in the beach with deliberate clearance creating low banks along its sides, Warren Point, near Minehead, Som. (**Line No. 10211**).



**Plate 62:** Apparently deliberate clearance along the edge of a pool associated with an irregular, curving stone bank (**Line No. 10202**) without an apex or outflow channel. Warren Point.



**Plate 63:** The subrectangular or horseshoe-shaped feature in Minehead Bay; possibly a fish weir but without a clear gut or outflow channel (**Line No. 10219**).



**Plate 64:** Brieger Williams recording the stone 'wall' feature at St Audrie's Bay, Som. (**Line No. 20059**), with the cleared pool to the left of the image.





**Plate 65:** Tidal pool at Lilstock, Som, with narrow line of stones extending across it (**Line No. 20104**), probably once some form of fishing-related structure.



**Plate 66:** Nick Witchell recording a linear stone structure (**Line No. 10214**) that extends across a tidal outflow channel at Madbrain Sands, Warren Point, Minehead, Som. The scale has been placed across the possible gut of this feature.



**Plate 67:** Stone wall **Line No. 10241** extending from left to right across the mid-upper part of the image towards Adrian Chadwick, appended to a stone fish weir (**Line No. 20082**). In the foreground and background are two areas largely cleared of beach cobbles.



**Plate 68:** Gore Point, Porlock, Som, showing the stone leader arm of fish weir **Line No. 10230/10232/10404** extending from the mid-left to upper right side of the image. The straight cobble bank (**Line No. 10233**) extends from the mid-right to the upper centre of the image, where it nearly meets stone bank **Line No. 10234**.





**Plate 69:** Looking south from stone bank **Line No. 10234**, at Gore Point, Porlock, Som, at the right of the image. The straight cobble bank (**Line No. 10233**) extends from the left to the mid-right of the image. The cleared pools on each side of 10233 are visible, as is the narrow gap between 10233 and 10234.



**Plate 70:** Gore Point, Porlock, looking north-east from stone bank **Line No. 10234**, at the lower left of the image. The apex of stone weir **Line No. 10230/10232/10404** can be seen in the distant upper right; whilst linear stone bank **Line No. 10233** extends from the upper right to the mid-left. The extensive cleared pool is visible.



**Plate 71:** Nick Witchell and Adrian Chadwick recording the northern end of linear bank **Line No. 10406** at Gore Point, Porlock, Som, showing the right-angled section extending to the north-west (upper left). One of the two stone heaps within the cleared area is also visible to the left.



**Plate 72:** Another view of bank **Line No. 10406** at Gore Point, Porlock, and the two heaps contained within the area of clearance. **Line No. 10407** is visible in the upper left. The marine biologist in the lower right was not part of the survey team.





**Plate 73:** The curvilinear stone banks **Line Nos. 10390** (left) and **10391** (right) at Gore Point, Porlock, looking north-west. The cairn or heap **Point No. 142** is visible between them.



**Plate 74:** Two as yet unrecorded linear features at Gore Point, Porlock, Som. (centre, upper right), each one showing the rows of distinct circular 'cairns' built on top of the low banks.





**Plate 75:** Linear low stone bank with at least four heaped 'cairns' visible on it, Gore Point, Porlock Weir, Som. (**Line No. 10231**).



**Plate 76:** A detailed view of one of the stone heaps or 'cairns' (**Point No. 67**) at Gore Point, Porlock, Som.; itself part of a large linear feature.





**Plate 77:** Nick Witchell next to a well-preserved stone heap (**Point No. 137**), north-east of the Old Harbour at Minehead Bay, Som.



**Plate 78:** A larger but more denuded stone heap in Minehead Bay, Som. (**Point No. 137**).



**Plate 79:** The surviving large conger eel trap at Minehead Bay, Som, with a low circular bank 19m across (**Line No. 10377**). The central heap of stones is now largely eroded.



**Plate 80:** Detail of the low circular stone bank forming part of the surviving conger eel trap in Minehead Bay, Som. (**Line No. 10377**).





**Plate 81:** Nick Witchell recording the leader arm of a V-shaped, stake-built fish trap at Beachley, Glos, looking south-east (**Line No. 10006**).



**Plate 82:** Detail of the leader arm of a V-shaped, stake-built fish trap at Beachley, Glos. (**Line No. 10007**). The trimming facets on the individual stakes are visible.



**Plate 83:** Detail of the leader arm of a V-shaped, stake-built fish trap at Beachley, Glos. (Line No. 10004). Remains of the woven horizontal hurdle panels can also be seen.



**Plate 84:** Detail of the arm of a 'T-shaped' stake-built structure at Oldbury Flats, South Glos, showing brushwood branches used as horizontal hurdling (Line No. 10015).





**Plate 85:** Detail of the leader arm and apex of a V-shaped, stake-built fish trap at Oldbury Flats, South Glos. (**Line No. 10032**), with multiple stakes and remains of horizontal hurdles.



**Plate 86:** Detail of woven withy tie associated with a circular catch basket and V-shaped fish trap at Oldbury Flats, South Glos. (**Point No. 95, Line No. 10339**).





**Plate 87:** A V-shaped, stake-built fish trap at Beachley, Glos. (**Line No. 10004**). The open apex of this trap appears to face north, or upstream; but to the east (right) there are stakes within the apex of a downstream facing V-shaped structure (also recorded as 10004).



**Plate 88:** A V-shaped, stake-built fish trap at Beachley, Glos. (**Line No. 10004**). The open apex of this example faces downstream, to the SSE. The line of stakes on the right is the line of stakes to the left of the image in Plate 87 above.



**Plate 89:** The apex of a V-shaped, stake-built fish trap at Oldbury Flats, Aust parish, South Glos. (**Line No. 10032**), with two others (**Line Nos. 10030 & 10031**) visible in the background – all 3 appear to face downstream, yet at least one circular catch basket faces upstream in between them.



**Plate 90:** The apex of a more eroded V-shaped, stake-built fish trap at Oldbury Flats, Aust parish, South Glos. (**Line No. 10038**). The open apex faces upstream in this instance. There are faint traces of a circular catch basket in the foreground.



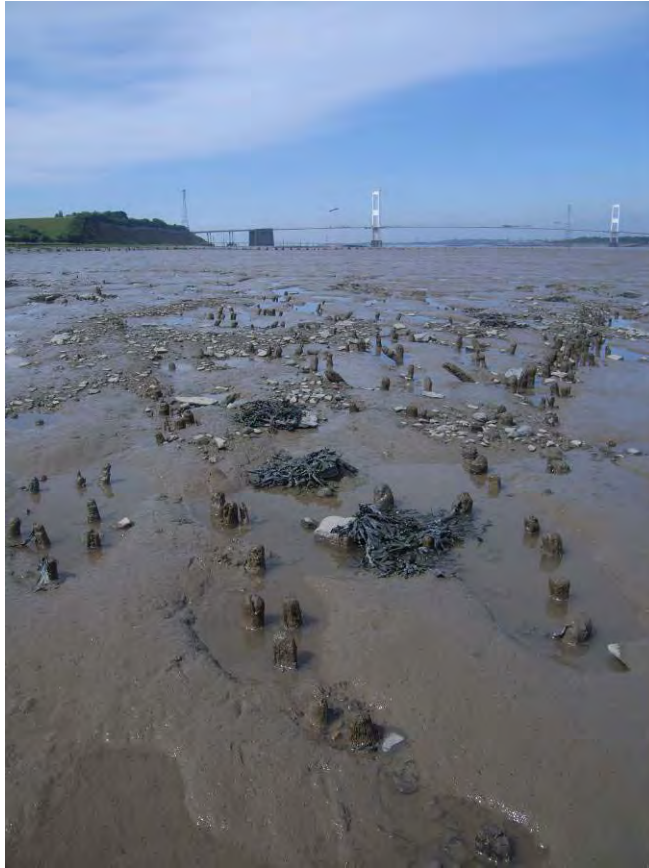


**Plate 91:** Another eroded, upstream-facing V-shaped fish trap at Oldbury Flats, Aust parish, South Glos. (**Line Nos. 10041/10342; Point No. 102**). The western leader arm at the left is almost completely eroded, and much of the circular catch basket has disappeared.



**Plate 92:** A V-shaped, stake-built fish trap 430m south-west of Walding's Pill, Stroath, Tidenham parish, Glos, photographed in 1998. Remains of horizontal hurdling are just visible, and the open apex faces upstream.





**Plate 93:** A V-shaped fish trap at Oldbury Flats (**Line Nos. 10032**) showing stakes within the downstream facing apex, but also stakes forming the leader arm of another possible phase (right). On the left of the image are the stake settings of a basket outside the apex.



**Plate 94:** The apex of another V-shaped, stake-built fish trap at Oldbury Flats (**Line No. 10030**), showing stakes within the downstream facing open apex, looking downstream.



**Plate 95:** A V-shaped, stake-built fish trap at Oldbury Flats, South Glos. (**Line No. 10031**), with additional stake structures within the apex. The open apex of this example faces downstream, to the SSE.



**Plate 96:** A V-shaped fish trap at Oldbury Flats in Aust parish, South Glos, with the remains of a circular catch basket at its apex. This faced upstream (**Line No. 10030, Point 98**). Note the stake settings within the downstream facing angle of the conjoined V-shaped trap at the upper left of the image – this is the same group of stakes shown in Plate 95 above.





**Plate 97:** The V-shaped, stake-built fish trap at Beachley with a circular catch basket (**Line No. 10343**), rapidly eroding at the edge of the river channel. It faces downstream to the S. Note the horizontal hurdle remains, and possible associated riverbank revetment.



**Plate 98:** Detail of the circular wattle-built catch basket of the V-shaped, stake-built fish trap at Beachley, shown above in Plate 97 (**Line No. 10343**), looking east. The horizontal weaving is just visible. See also Plates 99-100.



**Plate 99:** The circular catch basket of the fish trap at Beachley, Glos. (**Line No. 10343**), photographed in 2009. The narrow 'neck' of the structure is at the top of the image. Source of photo: Richard Morgan, used with permission.



**Plate 100:** Detail of the 'neck' of the wattle-built catch basket at Beachley shown above in Plates 98-99 (**Line No. 10343**). The sharp, inward facing stakes can be seen at lower left. Source of photo: Richard Morgan, used with permission.





**Plate 101:** Detail of a circular catch basket at Oldbury Flats (**Point No. 25**). The V-shaped leader arms of this feature have largely eroded away.



**Plate 102:** Another circular catch basket at Oldbury Flats, where the open apex faced downstream (**Point No. 95, Line No. 10339**). The withy tie shown in detail in Plate 86 above is just visible towards the left of the image, along with horizontal hurdles.





**Plate 103:** A V-shaped, stake-built fish trap at Oldbury Flats, South Glos, with a circular catch basket at the apex in the foreground, photographed in 2000. This is probably the same feature as **Line No. 10021**, **Plate 104** below. Source of photo: Simon Cooper, <http://www.salmonboats.co.uk>, used with permission.



**Plate 104:** The same V-shaped structure **Line No. 10021** at Oldbury Flats, South Glos, photographed in April 2011 looking upstream to the north-east. The additional line of probably later stakes can be seen in the upper left (**Line No. 10022**), as well as the overall effects of erosion and deterioration in eleven years. Much of the catch basket and many of the outlying groups and lines of stakes have now disappeared.





**Plate 105:** Another view of V-shaped structure **Line No. 10021** at Oldbury Flats, South Glos, at upper right; with additional stakes (**Line No. 10022**) at upper left. In the foreground are the stakes from an earlier/late apex or basket setting (**Line No. 10373, Point No. 22**).



**Plate 106:** The north-eastern end of **Line No. 10021** at Oldbury Flats, Aust, South Glos, looking south-west, with **Line No. 10022** visible in the upper middle of the image.



**Plate 107:** The possible T-shaped structure at Oldbury Flats, Aust parish, South Glos, looking south-west along the widely spaced stakes **Line No. 10016** towards the more densely spaced stakes of **Line No. 10015**.

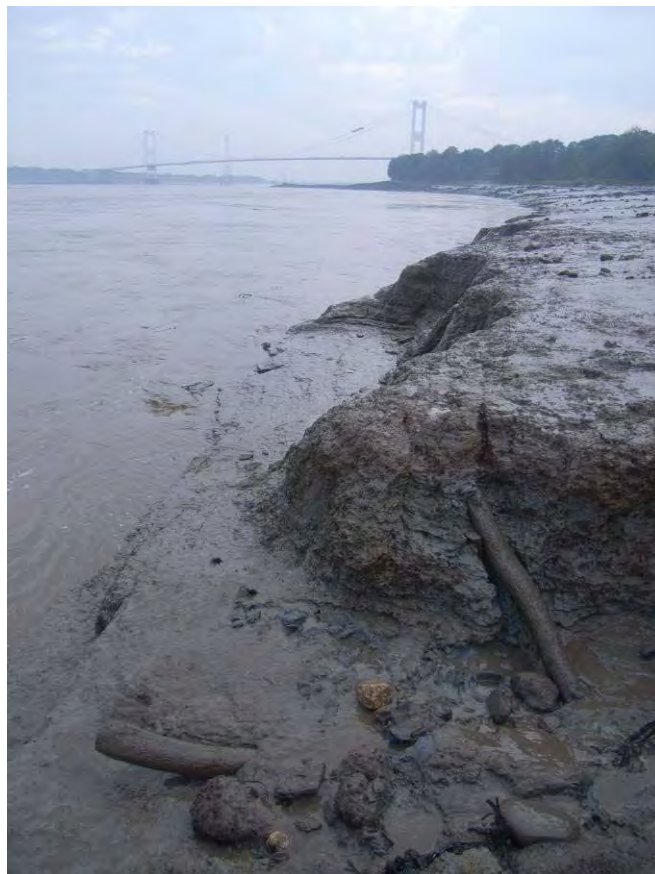


**Plate 108:** The possible T-shaped structure at Oldbury Flats, Aust parish, South Glos, looking south-east along the stakes of **Line No. 10015**.





**Plate 109:** Horizontal hurdling and vertical stakes at the very edge of the active river channel at Grange Pill, Woolaston, Glos. (**Line No. 10328**); representing either riverbank revetment or the fragmentary leader arm of a fish trap.



**Plate 110:** Possible riverbank revetment or cribbing of unknown date at Beachley (**Line No. 10343**).



**Plate 111:** Lines of stakes at Beachley, Glos. at oblique angles to the existing river channel (**Line No. 10341**), looking south-east. These may have once formed the leader arms of one or more V-shaped fish traps.



**Plate 112:** Small V-shaped setting at Oldbury Flats, Aust, South Glos. (**Line No. 10336**); possibly just for one basket, rather than being the fragmentary apex of a larger structure.





**Plate 113:** Wattle-built structure at Grange Pill, Woolaston, Glos. (**Line No. 10326**), made out of quite large hurdles. This may have been a round or oval putt-like basket.



**Plate 114:** One eroding edge of a much more finely woven wattle-built structure at Grange Pill, Woolaston (**Line No. 10326**), with the main bulk of the feature still below the sediments underneath the ranging pole. This may have been an oval putt or putcher-like fish basket.





**Plate 115:** A more well-preserved, finely woven fish basket at Grange Pill, Woolaston, Glos. (Line No. 10326), with the weave visible and the outer bracing. This may have been an oval fish basket similar to *putcheons* and *weels*.



**Plate 116:** A much smaller fish basket at Grange Pill, Woolaston (Line No. 10326), only c. 0.25m wide. This may have been a *putcheon* or *weel*, or similar to the *frails* used to transport individual fish away from putcher ranks.





**Plate 117:** A finely woven basket at Oldbury Flats, South Glos. (**Point No. 21**). It was a few metres NW of putt rank Line No. 10020, so may be a detached forewheel or a frail.



**Plate 118:** Another basket at Oldbury Flats (**Point No. 22**), with an inner, more finely woven structure. Close to several putt and putcher ranks, this may be a butt and a forewheel.



**Plate 119:** Line of low, eroded stakes just visible aligned vertically down the centre of the photograph, forming the leader arm of a stake-built fish trap at Stert Flats, Som. Photographed in 2009, they could not be subsequently relocated or formally recorded.

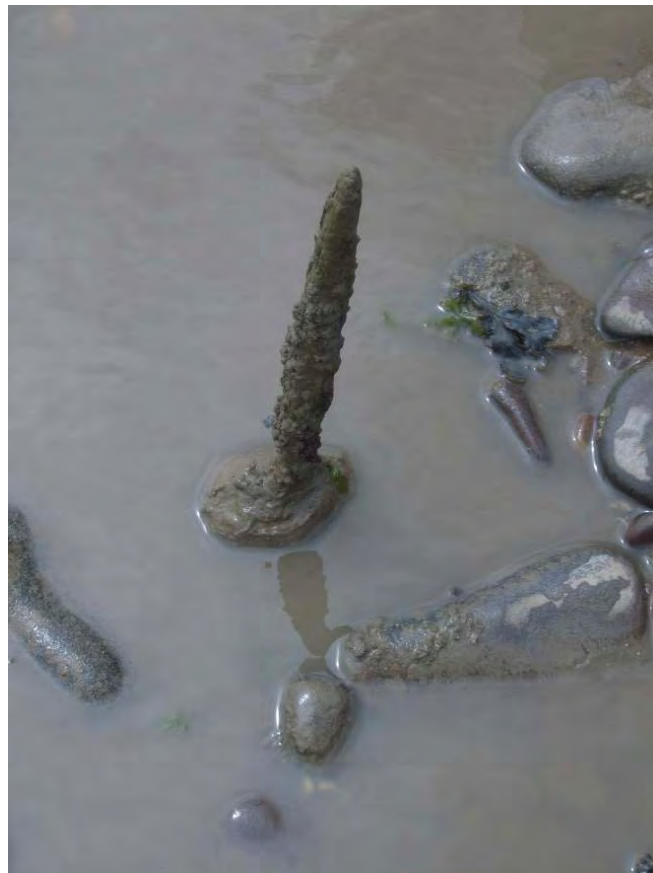


**Plate 120:** Another line of low, eroded stakes from a fish trap leader arm at Stert Flats, Som. (Line No. 10271), extending left to right across the photograph.





**Plate 121:** Briege Williams near the apex of a V-shaped, stake-built fish trap at Stert Flats, Som. (Line No. 10269). Two lines of converging stakes are just visible in the background.



**Plate 122:** Erosion from tidal scouring on a stake at Stert Flats, Som. (Line No. 10272), with a narrow remnant above the surface but a larger surviving section below.



**Plate 123:** Nick Witchell recording a fragmentary leader arm (**Line No. 20108**) from a stake built fish trap at Stert Flats, Som.



**Plate 124:** Nick Witchell recording the stakes at the apex of another, better preserved V-shaped fish trap at Stert Flats, Som. (**Line No. 20111**).





**Plate 125:** Large split oak stakes at the apex of one of the westernmost and best surviving V-shaped fish traps at Stert Flats, Som. (**Line No. 10271**); with Richard Brunning sampling stakes in the background



**Plate 126:** The location of a previously recorded V-shaped fish trap and stone marker cairn at Stert Flats, Som. (**Point No. 30020**; Brunning 2008, structure 204, 71-72, fig. 4). Only a few stones are now visible, as drifting sand has covered much of the feature.



**Plate 127:** The large V-shaped stake and stone fish trap at Stert Flats, Som. (**Line Nos. 10293-10296**), looking north-west towards the apex. The scale of the structure is apparent, along with possible different phases of leader arm at the left of the image.



**Plate 128:** The apex of the large stake and stone fish trap at Stert Flats, Som. (**Line Nos. 10293-10296**) looking north-east, also showing the kink along its northern arm. The large stakes on the right probably supported catch baskets.





**Plate 129:** Detail of the large stake and stone fish trap at Stert Flats, Som. (**Line Nos. 10293-10296**). Much of it is formed from densely packed small roundwood stakes and the bank of cobbles and gravel, but a line of larger, reddish-brown stakes is also visible.



**Plate 130:** Another detailed view of **Line Nos. 10293-10296**, Stert Flats, Som, showing a variety of sizes and types of stakes, probably from different phases of construction and use.





**Plate 131:** Fish trap **Line Nos. 10293-10296**, Stert Flats, Som, looking north-west. On the left, a stake line from a different phase (**Line No. 10297**) extends well beyond the apex.

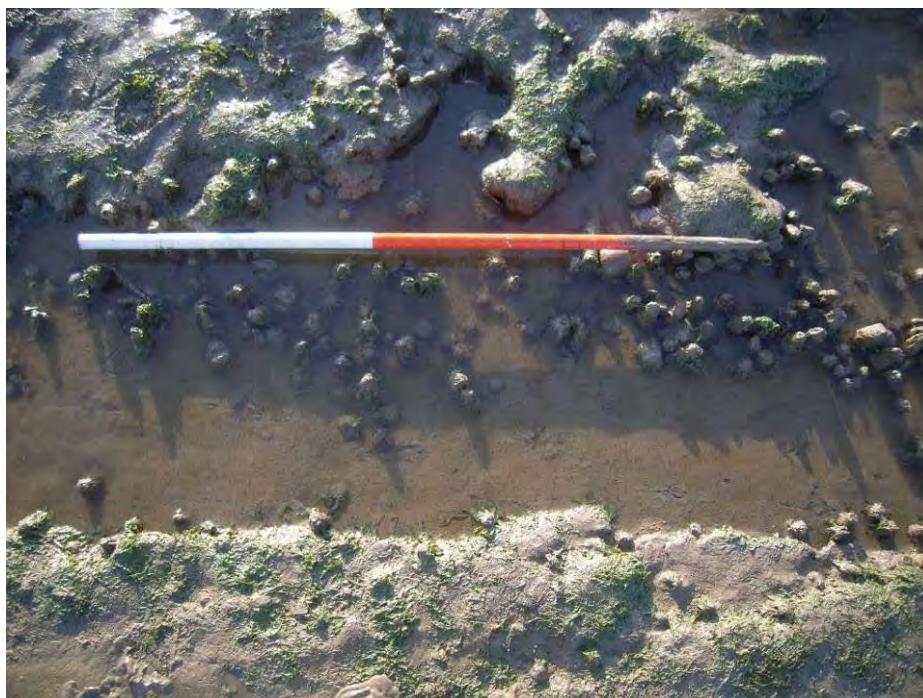


**Plate 132:** The deliberate gap (**Line No. 10295**) in stake and stone fish trap **Line Nos. 10293-10296**, with only a few single spaced posts set within it.





**Plate 133:** One of the dense lines or 'hedges' of multiple small stakes at Brean Beach/Berrow Flats, Som. (Line No. 10252).



**Plate 134:** A more detailed view of a dense line or 'hedge' of multiple small stakes at Brean Beach/Berrow Flats, Som. (Line No. 10252).



**Plate 135:** The stakes of most 'hedges' at Brean Beach/Berrow Flats, Som. (above the ranging pole) were less obvious, though this feature (**Line No. 10257**) was over 150m long.



**Plate 136:** Some angled stakes were associated with the linear stake-built features at Brean Beach/Berrow Flats, Som. The two here (one in the foreground, one next to the ranging pole set at the same angle) were part of **Line No. 10257**.





**Plate 137:** Nick Witchell recording where a multiple stake alignment (**Line No. 10251**) had cut through earlier peat deposits at Brean Beach/Berrow Flats, Som.



**Plate 138:** Berrow Flats, Som. In addition to the line of multiple stakes at the right (**Line No. 40018**), the horizontal roundwood elements just visible in the mud represent once upright 'sails' for hurdle panels. One horizontal element can be matched to its stake base.



**Plate 139:** Probable putt rank north-east of Littleton Pill, Oldbury Flats, South Glos. (**Line No. 10052**) looking west, with a putcher rank far out in the intertidal zone at the upper right.



**Plate 140:** More detailed view of putt rank **Line No. 10052** near Littleton Pill, Oldbury Flats, showing some of the additional stakes placed downstream that were used to support forewheels and butts; and the well-preserved woven remnants of the butts themselves.





**Plate 141:** Another view of some of the well-preserved woven butts (**Line No. 10054**) at Littleton Pill, Oldbury Flats, South Glos, looking south-west.



**Plate 142:** Detail of a withy tie used to secure a woven basket to a stake of the putt rank north-east of Littleton Pill, Oldbury Flats, Aust parish, South Glos. (**Line No. 10054**).



**Plate 143:** Another probable putt rank at Oldbury Flats, Aust parish, South Glos, south-west of Littleton Pill (**Line No. 10029**), as evidenced by the clusters of stakes on the right to support the large kype baskets, and the many outliers for butts and forewheels. It was re-used as a more recent net hang line (also shown in Plate 10 above).



**Plate 144:** The line of a much more eroded probable putt rank at Oldbury Flats, Aust parish, South Glos. (**Line No. 10020**). The larger stakes on the upstream, right side of the image may have supported the kypes, with the smaller examples the butts and forewheels.





**Plate 145:** The well-preserved rank at Slime Road, Sedbury, Glos. (Line No. 10072), looking north-east. The many downstream stakes suggest it was originally a putt rank.



**Plate 146:** Another view of the impressive fishing rank at Slime Road, Sedbury, Glos. (Line No. 10072). The dense clusters of larger upstream supports are evident.



**Plate 147:** A 20<sup>th</sup> century putcher rank at Gatcombe, Glos (**Line No. 10069**), with surviving horizontal basket supports, as well as additional angled bracing timbers held by upright metal posts on the downstream side.



**Plate 148:** A 20<sup>th</sup> century putcher rank south-west of Brims Pill, Awre, Glos. (**Line No. 10350**), with horizontal basket supports, metal pipes and downstream bracing timbers.





**Plate 149:** Another view of putcher rank **Line No. 10350** (left) south-west of Brims Pill, Glos, showing Toby Catchpole recording the slightly different alignment of earlier putcher rank **Line No. 10349** (right).



**Plate 150:** Two putcher ranks south of Awre, Glos, with a modern putcher rank on the right (**Line No. 10064**) built of telegraph poles, metal joists and concrete that replaced an earlier all wooden putcher rank visible on the left (**Line No. 10065**).



**Plate 151:** Remains of a modern putcher rank by the railway line north-east of Gatcombe, Glos, showing steel pipes, angle irons and pins all used as footings (**Line No. 10352**).



**Plate 152:** Another view of putcher rank **Line No. 10350** north-east of Gatcombe, Glos, showing modern sawn timbers, steel pipes and angle irons all used in construction.





**Plate 153:** Disused aluminium wire putcher baskets by putcher rank **Line No. 10350**, north-east of Gatcombe, Glos.



**Plate 154:** Briega Williams examining a pile of disused galvanised iron wire putcher baskets by one of the leader arms of the large fishing structure (**Line Nos. 10320-10322**) at Hayward Rock, Hills Flats, Ham and Stone parish, Glos.



**Plate 155:** Nick Witchell and Briege Williams by the apex (**Line No. 10321**) of the large structure at Hayward Rock, Hills Flats, Glos. that would have supported putcher baskets.



**Plate 156:** One of the extensive leader arms of the fishing structure at Hayward Rock, Hills Flats, Glos. (**Line No. 10322**) that would originally supported woven hurdle panels.





**Plate 157:** One of the earlier phases of the fishing structure at Hayward Rock, Hills Flats, Glos, where a double line of rock-cut putcher posts (**Line No. 10310**) was re-used as a leader arm and later also had nylon fishing nets attached to it.



**Plate 158:** Putter rank **Line No. 10097** at Hills Flats near White House, South Glos, re-used as a net hang. In the foreground are remains of earlier putcher rank **Line No. 10098**.



**Plate 159:** Briege Williams recording the north-western end of putcher rank **Line No. 10097** at Hills Flats near White House, South Glos, with the axle of an abandoned cart in the foreground.



**Plate 160:** The initial paired posts of **Line No. 10099**, forming the possible leader arm extension to **Line No. 10097** at Hills Flats near White House, South Glos.





**Plate 161:** A relatively recent putcher rank south-east of Awre, Glos. (Line No. 10061), stretching across a natural hollow in the intertidal surface.



**Plate 162:** The remains of an earlier putcher rank at Hills Flats on the boundary between Hill parish, South Glos. and Ham and Stone parish, Glos. (Line No. 10104).



**Plate 163:** Briege Williams recording another putcher rank (**Line No. 10095**) at Hills Flats near White House, Oldbury-upon-Severn, South Glos.



**Plate 164:** The fragmentary remains of a probable putcher rank at Severn Beach, South Glos. (**Line No. 10088**), close to the wreck of a trow or barge. The Severn Beach power station is visible in the background.





**Plate 165:** A relatively recent putcher rank in deep mud at Oldbury Flats, Aust parish, South Gos. (Line No. 10042), made from soft coniferous wood.



**Plate 166:** Briege Williams and Nick Witchell recording two adjacent, relatively modern putcher ranks north-east of Horse Pill, Stroath, Tidenham parish, Gos. (Line Nos. 10329 & 10330).



**Plate 167:** Adrian Chadwick recording the two lines of more eroded and weed covered putcher rank posts at Sedbury Cliffs, Tidenham, Glos. (**Line Nos. 10075 & 10076**).



**Plate 168:** Another less obvious putcher rank south-west of Gatcombe, Awre parish, Glos. (**Line No. 10362**), consisting of two lines of low, eroded posts.





**Plate 169:** Nick Witchell recording the sinuous line of a putcher rank at Aust, South Glos. (Line No. 20000), later re-used as a net hang.



**Plate 170:** A curving putcher rank at Oldbury Flats, Aust parish, South Glos. (Line No. Line No. 10059).



**Plate 171:** Two extensive putcher ranks at Oldbury Flats, Aust parish, South Glos, extending hundreds of metres across deep mud out into the river channel, with **Line No. 10055** on the left; and **Line No. 10056** on the right. See also Plate 139 above.



**Plate 172:** The last permanent putcher rank structure still in use on the River Severn, south-west of Awre, Glos. (**Line No. 10062**).





**Plate 173:** Some of the modern wire putcher baskets used in the last permanent working putcher rank on the River Severn south-west of Awre, Glos (**Line No. 10062**).



**Plate 174:** The remains of wooden posts and a horizontal wooden rail partly buried by mud south-west of Awre, Glos (**Line No. 10063**), probably an earlier version of the putcher rank shown in Plates 172-173 above.





**Plate 175:** Putcher rank **Line No. 10351**, south of Poulton Court, Awre parish, Glos. In the upper left, a flight of stone steps is visible, built into the flood defence wall.



**Plate 176:** Putcher rank **Line No. 10349** south-west of Brims Pill, Awre parish, Glos.; and the flight of stone steps that led down to this fishing station built into the flood wall.





**Plate 177:** Roughly paired posts of a relatively recent, possible putcher rank west of Dowlais Farm, Kingston/Woodspring Bay, North Som. Photographed but not otherwise recorded.



**Plate 178:** Posts of a probable putt rank at Stert Flats, Som. (**Line Nos. 10285 & 10286**), looking north-east. The larger clusters of posts are on the south-eastern facing side of the structure at the right of the image, against the outgoing ebbing tide in the Gutterway.



**Plate 179:** Nick Witchell recording **Line Nos. 10285 & 10286** at Stert Flats, Som, looking south-west. On the right of the image is the additional putt? rank **Line Nos. 10287 & 10288**.



**Plate 180:** Stert Flats, Som, looking south-west along possible putcher rank **Line No. 10273** (right of Nick Witchell and Richard McDonnell), towards the more substantial possible putt rank **Line No. 10274**.





**Plate 181:** The small single, spaced stakes of possible putcher rank **Line Nos. 10273 & 10274**, Stert Flats, Som, looking north-east. The stakes are barely discernible.



**Plate 182:** Possible putcher rank **Line No. 20116** at Stert Flats, Som, looking north-east. The stake supports are single or in groups of 2-3.



**Plate 183:** Looking north-east from lower left to upper right along putt or putcher rank **Line Nos. 10300 & 10301**, Stert Flats, Som. This feature was added to the northern arm of stone and stake fish trap **Line Nos. 10293/10294**, extending left to right in the background.



**Plate 184:** Another view looking north-west of putt or putcher rank **Line Nos. 10300 & 10301**, Stert Flats, Som, extending left to right; and meeting stone and stake fish trap **Line Nos. 10293/10294**, visible from the upper left to the lower right.





**Plate 185:** A possible putcher rank (**Line No. 10111**) at Hayward Rock, Hills Flats near Severn House Farm, Ham and Stone parish, Glos. The pairs of posts have been driven into the soft marl bedrock, and wedged in place with smaller stakes.



**Plate 186:** Another possible putcher rank at Hayward Rock, Glos, consisting of pairs of posts and stake wedges set within rock-cut postholes, pre-dating the large fishing structure there. Although not formally recorded, this is probably a continuation of **Line No. 10317**.





**Plate 187:** Another rock-cut posthole at Hayward Rock, Hills Flats, Glos, from a possible net hang or putcher (**Line No. 10316**). The packing stones are clearly visible.



**Plate 188:** A rock-cut posthole at Hayward Rock, Hills Flats, Glos, partly exposed where the marl rock has sheared off, and part of a probable putcher rank (**Line No. 10158**). The postholes and driven posts often exacerbate the erosion of the soft rock.





**Plate 189:** Three lines of rock-cut postholes from one or more phases of a putt or putcher rank at Hayward Rock, Hills Flats, Glos. (**Line No. 10159**).



**Plate 190:** Two pairs of rock-cut postholes with surviving post stumps north-east of Gatcombe, Glos, probably part of a putcher rank (**Line No. 10353**).





**Plate 191:** Pairs of wooden posts with smaller wedges in rock-cut postholes between Purton (Forest of Dean) and Gatcombe, Glos, part of a putcher rank (**Line No. 10364**).



**Plate 192:** Two rock cut postholes south-west of Sharpness Docks, Glos, part of a putcher rank (**Line No. 10358**). The one on the right has a surviving wooden stump.





**Plate 193:** Toby Catchpole recording the rock-cut postholes and surviving wooden posts and wedges of a putcher rank south-west of Sharpness Docks, Glos. (**Line No. 10360**).



**Plate 194:** Several pairs of modern, machine-cut wooden posts at Kilkenny Bay, Portishead, Nth Som. (**Line No. 10354**). It is not clear what these widely spaced pairs of posts represented.



**Plate 195:** Northwick Oaze, South Glos, looking south-west towards the corner of the L-shaped structure (**Line No. 20017**), and showing the irregular branches and metal poles.



**Plate 196:** Detail of the 'corner' of **Line No. 20017** at Northwick Oaze, South Glos.; showing the double row of stakes on the NW-SE arm, and the stones and outlying stakes.





**Plate 197:** Double row of small stakes from a possible putcher rank within the L-shaped structure **Line No. 20017** at Northwick Oaze, South Glos.



**Plate 198:** Part of the possible NW-SE aligned hurdle trackway at Oldbury Flats, just north-east of Littleton Warth in Aust parish, South Glos. (**Line No. 10057**).



**Plate 199:** Detail of the 'sails' and the wattling construction of the hurdle panels forming a trackway in **Line No. 10057**, Oldbury Flats, Aust, South Glos.



**Plate 200:** Another view of possible hurdle trackway **Line No. 10057** at Oldbury Flats, Aust, South Glos.; showing the outlying stakes.





**Plate 201:** Nick Witchell recording the fishing station (**Point No. 3**) south of Black Rock Clyce on the eastern bank of the River Parrett at Pawlett Hams, North Somerset.



**Plate 202:** Another view of fishing station **Point No. 3** near Black Rock Clyce, Pawlett Hams, North Somerset; showing the stone rubble at the mound edge, the secure store and the winch.



**Plate 203:** Nick Witchell recording a probable brick-built fish house at Minsterworth Ham, Glos. (**Point No. 5**). Note the chimney.



**Plate 204:** Another possible fish house on the south side of Minsterworth, Glos. (**Point No. 13**), recorded from the opposite riverbank at Elmore Back using the laser rangefinder.





**Plate 205:** Brick and concrete fish house south-west of Awre, Glos. (**Point No. 30**), close to the last permanent working putcher rank on the River Severn (**Line No. 10062**; see Plates 172-173 above). Note the disused wire putcher baskets at the left of the image.



**Plate 206:** The stone building at Middle Hope, St Thomas' Head, North Som. It features a large fireplace and another smaller fireplace or oven, but it does not have easy access to the sea. It was not formally recorded.





**Plate 207:** The possible beach mooring area at Warren Point, Minehead Bay, Som. There is a broadly subrectangular area of clearance, with a 0.80m high wooden post near its centre. The distinct 'notch' in the low clearance bank is visible in the foreground.



**Plate 208:** An upright stone set into the intertidal zone north-west of Watchet Harbour, Som. Not formally recorded.





**Plate 209:** The large subrectangular area cleared of boulders and cobbles at Gore Point, Porlock, Som, where boats or ships were able to beach themselves.



**Plate 210:** Large upright wooden post 3-4m high near Minehead Harbour, Som, either used as a mooring post or perhaps to support a beacon. Not formally recorded.



**Plate 211:** Three substantial metal posts at Slime Road, Sedbury, Glos. It is not clear what these were used for, although mooring boats seems a possibility. Not formally recorded.



**Plate 212:** Low, eroded wooden post surrounded by stones used to support and stabilise it, Doniford Bay, Som. (**Point No. 50012**).





**Point 213:** A single isolated wooden post at Slime Road, Sedbury, typical of many hundreds of such features along the shores of the River Sever.



**Plate 214:** Purpose-made iron mooring post at Castle Meads, Alney Island near Gloucester. Originally used for canal boats to temporarily moor up, it is now overgrown in scrub.





**Plate 215:** Part of the stone wharf/quay at Gatcombe, Glos, with remains of three stop net boats (see Plates 239-240 below). The railway line is immediately to the left.



**Plate 216:** The turnstile of the old ferry terminal at Old Passage, Aust, South Glos, not formally recorded.

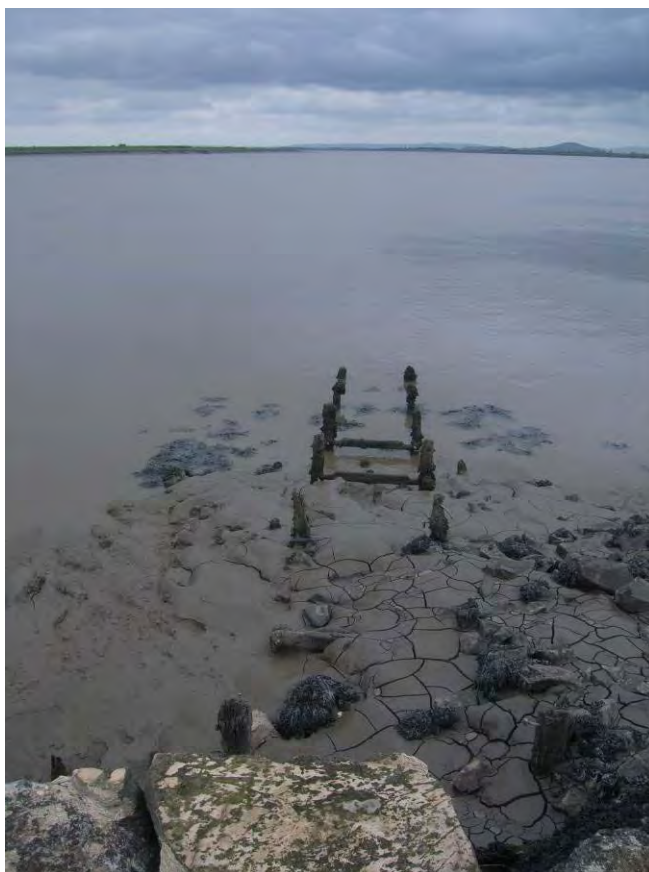




**Plate 217:** The vehicle ramp of the old ferry crossing at Old Passage, Aust, South Glos, looking north towards the First Severn Crossing road bridge.



**Plate 218:** Two older wooden phases of ferry piers at Old Passage, Aust, South Glos, with the First Severn Crossing road bridge in the background.



**Plate 219:** The wooden footings of a probable jetty at Cobbs Leaze Clyce on the River Parrett at Pawlett Hams, Som. Not formally recorded.



**Plate 220:** Part of a small jetty, landing stage or trackway south-west of Horse Pill, Stroath, Glos. (**Point No. 128**).





**Plate 221:** Briege Williams and Adrian Chadwick recording the remains of a timber and stone wharf structure called Robin's Quay near Redwick, New Passage, South Glos. (**Line No. 20021**), looking east.



**Plate 222:** Adrian Chadwick recording the second stone and timber wharf structure at Redwick, New Passage, South Glos. (**Line No. 20022**), looking west.





**Plate 223:** A stone wall probably once associated with a wharf at Strand, Westbury-on-Severn parish, Glos. Not formally recorded.



**Plate 224:** The main stake alignments **Line Nos. 10264** (left) & **10265** (right) forming part of a probable brushwood trackway, looking south-east towards Burnham-on-Sea, Som.





**Plate 225:** The wooden trackway near Burnham-on-Sea, Som, looking north. Nick Witchell is recording whilst Richard McDonnell and Richard Brunning are sampling stakes. **Line No. 10264** is on the right, and **Line No. 10265** on the left. A central line of stakes is also visible.



**Plate 226:** The edge of trackway **Line Nos. 10264 & 10265**, near Burnham-on-Sea, Som, showing stakes and surviving brushwood.



**Plate 227:** Trackway **Line Nos. 10264 & 10265** to the north-west of Burnham-on-Sea, Som, photographed in 1994 when the brushwood was not covered with so much mud. Photo source: Richard McDonnell 1994, used with permission.



**Plate 228:** Possible keelson north of the harbour at Lydney, Glos. (**Point Nos. 5000-5002**).





**Plate 229:** The hulk of a wooden and iron vessel south-west of Lydney harbour, Glos. (**Line No. 40053**). Note the concrete infill of the lower hull.



**Plate 230:** The sternpost, lower hull and part of the rudder of another hulked vessel at Lydney, Glos. (**Line No. 40006**).



**Plate 231:** The remains of some of the concrete barges at Purton, Glos.



**Plate 232:** The remains of two of the predominantly wooden vessels at Purton, Glos.





**Plate 233:** The lower hull and keelson of the previously unrecorded vessel north-east of Awre, Glos. (**Point No. 132**).



**Plate 234:** What are probably the remains of the upper part of the same vessel north-east of Awre, Glos. (**Point No. 132**), twisted and distorted by river currents.



**Plate 235:** Fragment of a wooden vessel south of Awre and Whitescourt in Glos. (**Point Nos. 28-29**), possibly including part of the rudder.



**Plate 236:** Toby Catchpole recording a wooden rudder and tiller north-east of Gatcombe, Glos. (**Point No. 107**), probably an isolated find that has drifted to this locale.





**Plate 237:** The lower hull of a wooden vessel at Portishead Dock. This was not formally recorded, as it is on the North Somerset HER (MNS 1877).



**Plate 238:** The lower wooden hull of a vessel in deep mud near Chittening Warth, Severn Beach, South Glos, with the keelson and ribs surviving (**Line No. 10087**). These may be the remains of a vessel called the *William* (HER 1279; NMR 1465116).





**Plate 239:** One of the stop-net boats at Gatcombe, Glos, that has been badly burnt by vandals (see Plate 215 above for the general locale).

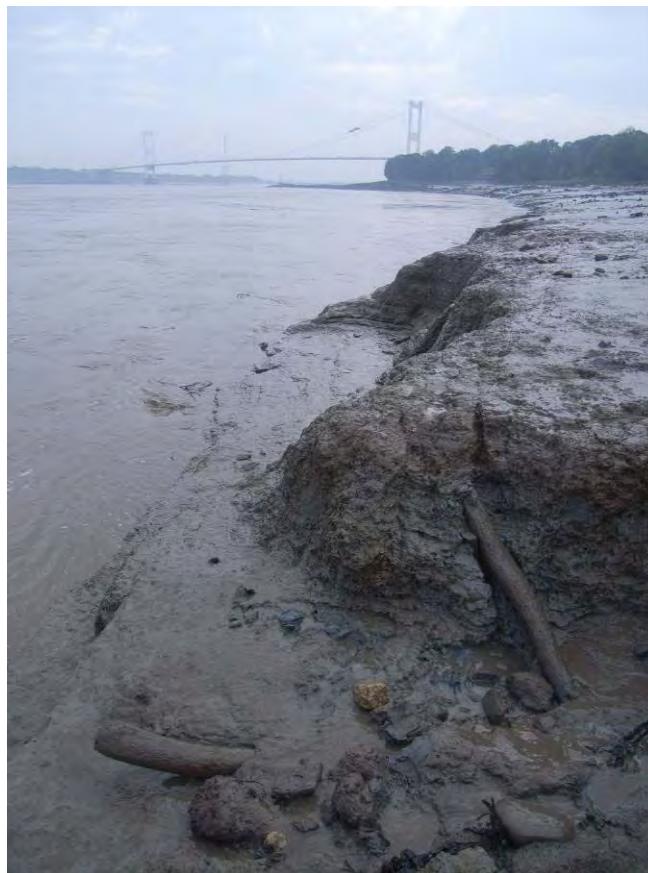


**Plate 240:** Another stop-net boat at Gatcombe, Glos.; this example having split in two. In the upper left of the image are two of the rames or rimes – the poles used to support the nets.





**Plate 241:** Several different phases of riverbank revetment or cribbing at Stockland Reach, Pawlett Hams, Som. (**Line No. 10001**).



**Plate 242:** Possible wooden revetment structure associated with a V-shaped fish trap (**Line No. 10345**), eroding out of the channel edge near Beachley, Glos.



**Plate 243:** Stone and timber riverbank revetment on the western bank of the River Parrett north of Comwich, Som. (**Line No. 40021**), similar to many within the Severn RCZAS area.



**Plate 244:** Eroded coniferous wooden posts of relatively recent date north-east of Severn House Farm, Ham & Stone, Glos. (**Line No. 10106**), possibly some form of revetment structure.





**Plate 245:** Nick Witchell recording possible boat timbers re-used as a beach groyne at Madbrain Sands/Warren Point, Minehead Bay, Som. (**Line No. 10199**).



**Plate 246:** The stone and timber triangular breakwater or groyne at St Audrie's Bay, Som, originally designed to protect a grotto feature, partly visible at the right of the image.



**Plate 247:** The surviving grotto wall at St Audrie's Bay, Som. (Som HER FID 198 PRN 33342). A single course of masonry is now precariously supported on an eroding 'pedestal'.



**Plate 248:** The line of elm or lime posts at St Audrie's Bay, Som. (Line No. 10164), forming some type of beach defence or groyne.





**Plate 249:** One of the timber and stone structures at the base of the large rhyne or reen at Hock Ditch, near Fretherne, Glos. (**Point Nos. 31-32**). The end of the iron spike can be seen protruding from the round timber above the ranging pole.



**Plate 250:** The second stone and timber structure visible in the sides of the rhyne at Hock Ditch, Glos. (**Point Nos. 33-34**). Note the vertical timber at the left of the image.





**Plate 251:** Earlier phases of flood defence near at Pawlett Hams, Som, taken from the existing defence bank. One back scarp ditch can be seen in the foreground, whilst an earlier bank extends from the mid-right to the upper left of the image. Not formally recorded.



**Plate 252:** The other 'Great Wall' of Elmore, situated to the south-east of Elmore Back, Glos. (Line No. 10014). A slight earthwork bank 4-5m wide is just visible in the centre of the image, extending south-eastwards towards the higher ground of Elmore Court at upper right.





**Plate 253:** The brick-built pillbox on top of the sea wall near the old ferry ramp at Beachley, Glos. (Point No. 12).



**Plate 254:** The remains of the pillbox at Battery Point, Portishead, looking west across Woodhill Bay. Not formally recorded.



**Plate 255:** The well-preserved pillbox in the dunes at Sand Bay, Kewstoke, North Som, looking east. The structure on the roof is unusual, and may have been for range-finding equipment. This structure was not formally recorded.



**Plate 256:** The well-preserved interior of the pillbox at Sand Bay, North Som. This was not formally recorded.





**Plate 257:** The camouflaged stone and brick pillbox at the southern end of Weston Bay, Uphill, North Som. This structure was not formally recorded.



**Plate 258:** One of two camouflaged pillboxes at Porlock Weir, Som. This example is subsiding and tilting down into the softer underlying shingle and pebble beach. It was not formally recorded.





**Plate 259:** Toby Catchpole recording a pillbox north of Passage Farm, Arlingham, Glos. (**Point No. 123**). Although well-preserved, the entire structure is slowly sinking into softer underlying alluvial deposits.



**Plate 260:** Another pillbox at Arlingham, Glos. (**Point No. 119**), that has almost completely subsided into soft riverbank sediments south-west of Passage Farm.





**Plate 261:** The pillbox near to the Old Passage Inn at Arlingham (**Point No. 118**) has slipped off the riverbank completely and is now in the active river channel, being buried by river silts.



**Plate 262:** The rare surviving infantry section post at Blue Anchor Bay, Som. (**Point No. 3009**). The emplacement on its roof was for an anti-aircraft gun, though few were ever fitted.



**Plate 263:** The concrete observation post on the eastern side of the harbour at Watchet, Som.; that will shortly fall off the soft eroding cliff face. It was not formally recorded.



**Plate 264:** The brick-built observation post on top of the cliffs at Kilve, Som. (**Point No. 54**).





**Plate 265:** The Second World War concrete observation post at Lilstock, Somerset. This was not formally recorded.



**Plate 266:** Part of a concrete and iron structure on Bossington Hill, Somerset; possibly the base for a military aerial or antennae. This was not formally recorded.





**Plate 267:** Black and white sentry box now covered in graffiti, north of Sheepway and Atherton House, Portbury Wharf, North Som, originally guarding an anti-aircraft and searchlight battery. Not formally recorded.



**Plate 268:** Anti-invasion concrete post at Berrow Flats, north-west of Burnham-on-Sea, Som. Another example is visible in the background. These were not formally recorded.





**Plate 269:** The sinuous line of the probable peat-filled palaeochannel at Brean Beach, Berrow Flats, Som. (**Line No. 20105**), looking north-west towards Steep Holm. The surrounding deposits have eroded and left it sitting above the rest of the intertidal surface.



**Plate 270:** A detailed view of a natural section across peat-filled palaeochannel **Line No. 20105**, Berrow Flats, Som. Animal bone was retrieved from next to this eroding section.



**Plate 271:** Briega Williams standing next to the line of a possible peat-filled palaeochannel near Hill Pill, Hills Flats, South Glos. (**Line No. 10102**), recorded as part of a larger peat exposure.



**Plate 272:** A piece of waterlogged prehistoric wood from the submerged forest and peat deposits at Blue Anchor Bay, Som. (**Line No. 10142**), showing how marine molluscs bore into the wood and thus exacerbate its erosion. Several bivalves are visible in burrows on the left side of the wood.



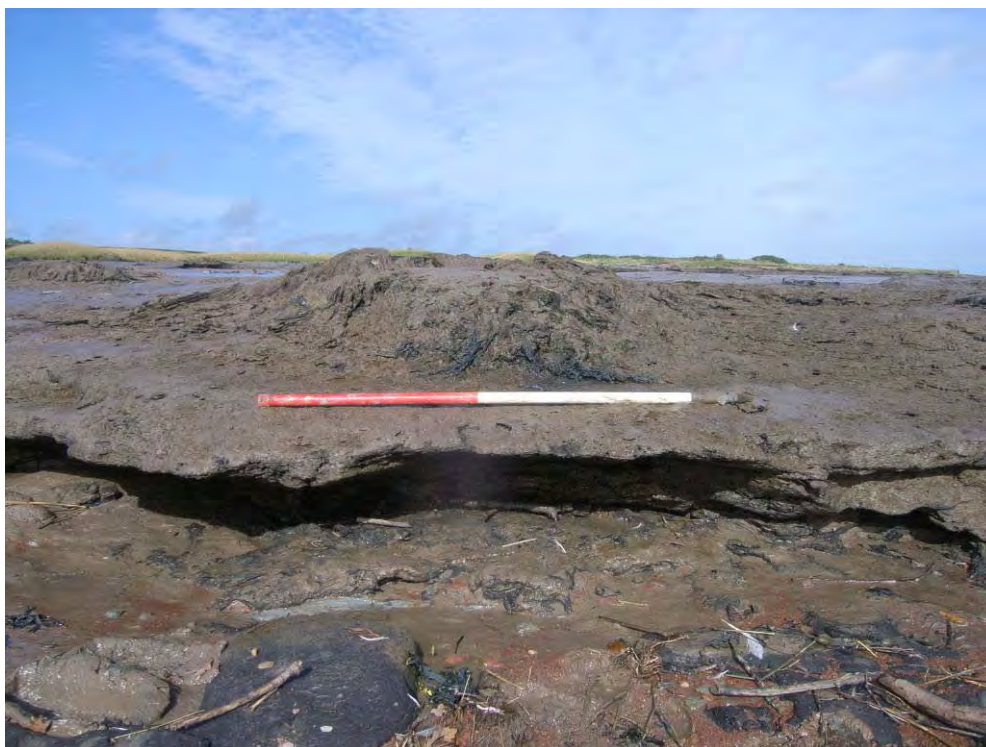


**Plate 273:** One of the preserved prehistoric tree trunks at Grange Pill, near Woolaston, Glos.



**Plate 274:** The preserved root bole of a prehistoric tree stump at Grange Pill, near Woolaston, Glos. These submerged forest and peat deposits were not formally recorded.





**Plate 275:** Another tree root bole at Grange Pill, Woolaston, Glos.; also illustrating the depth of peat exposures that occur in at least two major deposits.



**Plate 276:** The extensive exposures of peat near the mouth of Hill Pill, Hills Flats, South Glos. (Line No. 10102).





**Plate 277:** Peat exposures and preserved tree root boles south-west of Berkeley Power Station, Hills Flats, Hill parish, South Glos. (**Line No. 10103**).



**Plate 278:** Peat exposures and preserved tree trunk remains at Hills Flats, Ham and Stone parish, Glos. (**Line No. 10109**).





**Plate 279:** Possible animal hoof prints (?) on a peat exposure at Hills Flats, Hill parish, South Glos. (**Line No. 10102**). There are one or two possible examples in the upper left of the image, and one at the lower right.



**Plate 280:** A preserved tree root bole south-west of Littleton Pill, Aust parish, South Glos. (**Line No. 10040**). These are previously unrecorded remains.





**Plate 281:** Previously unrecorded peat exposures south-west of Gullhouse Point, Kingston/Woodspring Bay, North Som. (**Line No. 10082**).



**Plate 282:** Nick Witchell recording some of the fragmented blocks of peat west of Brean Court, Brean Beach/Berrow Flats, Brean, Som. (**Line No. 10250**), looking west towards Steep Holm.



**Plate 283:** The eroding edge of the peat exposure at the northernmost end of Brean Beach/Berrow Flats, Som. (**Line No. 10262**), looking north-east towards Brean Down.



**Plate 284:** Peat and submerged forest deposits at Stolford, Som. (**Line No. 10304**). The large size of some of the surviving tree trunks is evident.





**Plate 285:** Section through intertidal deposits at Stolford, Som. (**Line No. 10306**). The upper dark grey-black peat lies above a lighter brown peat with concentrations of snail shells.



**Plate 286:** Nick Witchell, Briege Williams and Richard Brunning recording and sampling peat and submerged forest deposits at Blue Anchor Bay, Som. (**Line No. 10142, Point No. 46**).





**Plate 287:** Surviving tree root bole in peat and submerged forest deposits at Blue Anchor Bay, Som. (Line No. 10142). The pitting of the wood from burrowing marine molluscs is notable.



**Plate 288:** Compressed mass of branches in peat and submerged forest deposits at Blue Anchor Bay, Som. (Line No. 10142).





**Plate 289:** Eroding peat and submerged forest deposits at Minehead Bay (**Line No. 10217**). The peat deposits are increasingly fragmented and isolated, whilst the waterlogged tree stumps and wood is being pitted and broken up by burrowing bivalve molluscs.

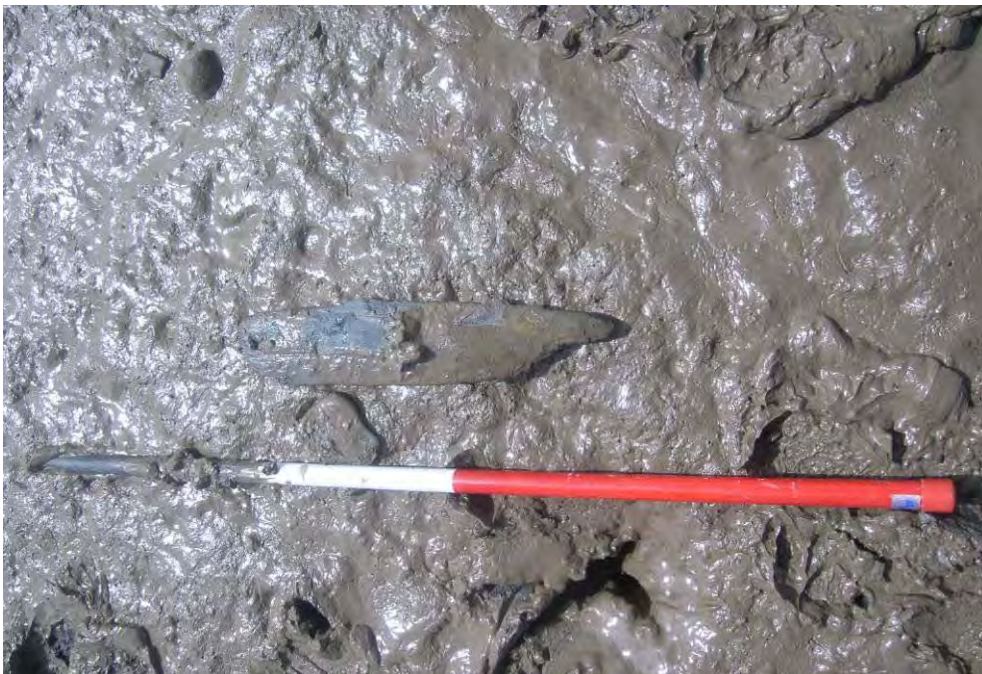


**Plate 290:** Nick Witchell recording a tree root bole from the visible submerged forest deposits in Porlock Bay, Som. (**Point No. 50008**), during the Phase 2a pilot fieldwork in 2009.





**Plate 291:** Prominent ridge and furrow earthworks near Shepperdine Farm, Oldbury-upon-Severn, South Glos. These features were not formally recorded during the RCZAS fieldwork, although they were plotted by the Phase 1 NMP aerial survey.

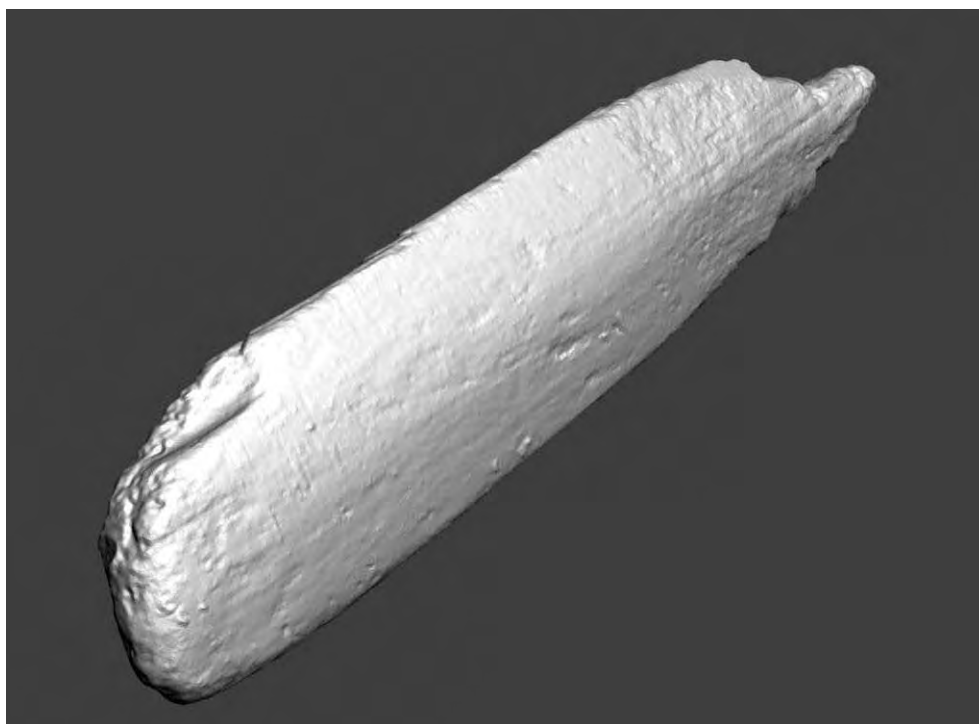


**Plate 292:** The oar or paddle blade found at Beachley, Glos. just after recovery, and prior to cleaning and scanning (**Point No. 6**).





**Plate 293:** Photographs of the dorsal and ventral surfaces of the oar or paddle blade from Beachley, Glos, after cleaning by Toby Jones of the Newport Ship Centre.



**Plate 294:** A three-dimensional, scanned computer-generated image capture of the oar or paddle blade from Beachley, Glos, produced by Toby Jones of the Newport Ship Centre. The gently convex surface of the blade is noticeable, and together with the handle being in line with one edge of the blade, suggests that it is an oar.



**Plate 295:** Another three-dimensional, scanned computer-generated image capture of the oar or paddle blade from Beachley, Glos, produced by Toby Jones of the Newport Ship Centre. The gently convex surface of the blade is again apparent, but also what appears to be a deliberately carved 'anti-fouling' groove.



**Plate 296:** Large fragment of a late 17<sup>th</sup> -18<sup>th</sup> century ceramic dish (**Point No. 50022**) found adjacent to the stake-built structure **Line No. 40017** at Berrow Flats, Som.





**Plate 297:** Andrew Walsh making a digital voice record of a large stone fish weir at Gore Point, Som. (**Line No. 10403**). Despite the large size of this structure, erosion of the bank is gradually making the feature less distinct, with material tumbling off into the previously cleared pool on the right, and into a boulder field on the left.



**Plate 298:** Large earth-moving plant being used to machine out the channel leading to the harbour at Porlock Weir, Som. in 2009. Such groundwork should always be subject to archaeological mitigation, including the possibility of watching briefs and evaluations.



**Plate 299:** Briege Williams, Nick Witchell and Richard Brunning heading back to the shore after a survey visit to Blue Anchor Bay, Som, July 2010.



**Plate 300:** Adrian Chadwick, Nick Witchell and Briege Williams by flood defence earthworks at Pawlett Hams next to the River Parrett, North Somerset, September 2010.





**Project funded by**



**National Heritage Protection Commissions Programme**